



To view and download  
all the content from this  
device, scan the QR code  
using the camera app on  
your phone.

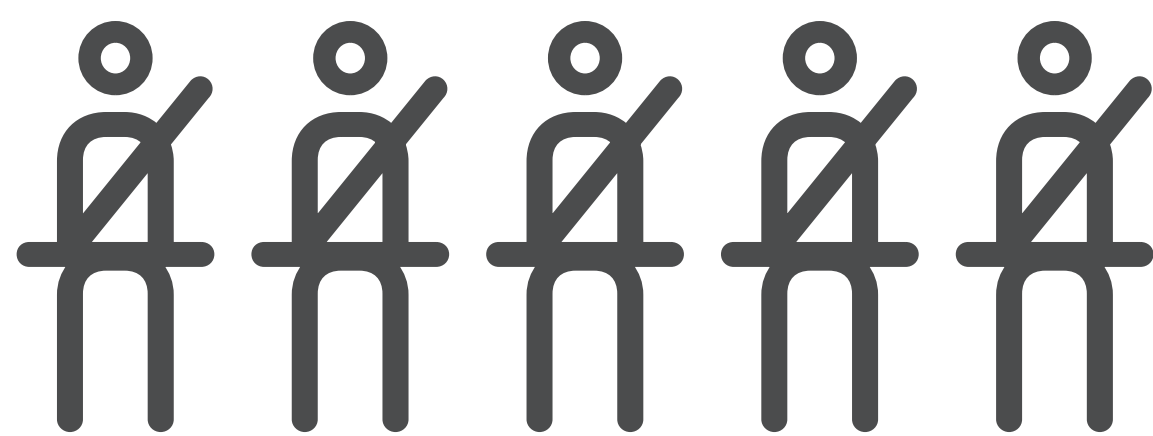


# KON-TIKI 874

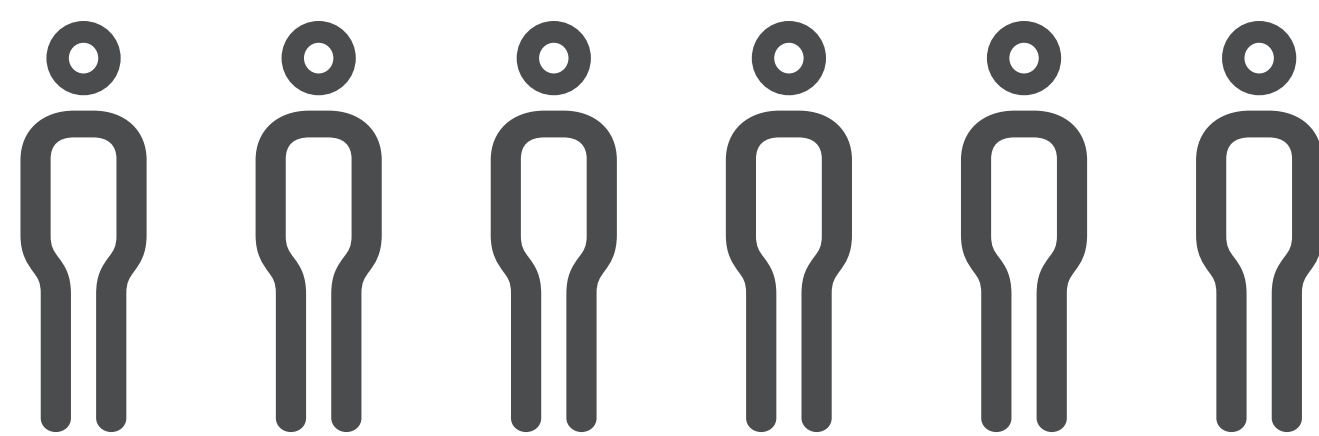
## On the road price

# £109,990.00

## Seatbelts



## Berths



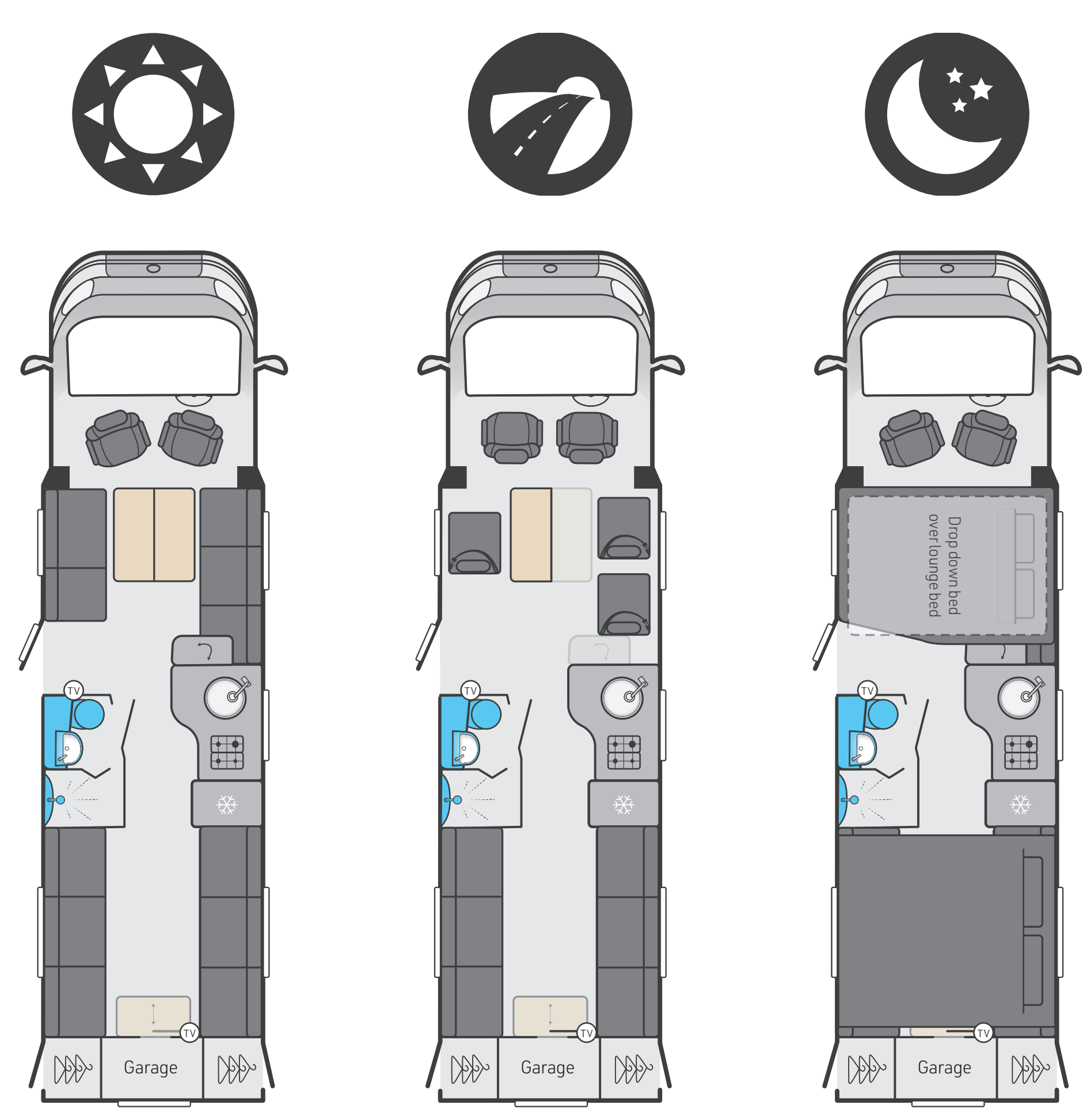
OTR Prices shown are for the 2023 model.

On the road (OTR) price includes a recommended cost of £1,695.00 to cover delivery to dealer in Great Britain, a set of number plates (inc. VAT), 12 months road fund licence and first registration fee. Model on display is a 2022 specification.

Product specification for 2023 may vary so please check with your dealer regarding specification details.

# KON-TIKI

# 874



## Weights and dimensions

Overall Width#	2.38m / 7' 10"
Overall Length#	8.96m / 29' 5"
Overall height (inc. TV aerial)	2.87m / 9' 5"
Mass In Running Order (Inc. Tolerance)	3942kg
Maximum Technical Permissible Laden Mass	5000kg

# The dimensions given are approximate due to slight variations in suspension ride heights, loading conditions and tyre pressures.



SWIFT

# KON-TIKI

# 2023



774



Seatbelts	⚠ ⚠ ⚠ ⚠ ⚠
Berths	🛏 🛏 🛏 🛏 🛏
Length	8.22m / 27'0"
MTPLM	4500kg

784



Seatbelts	⚠ ⚠ ⚠ ⚠ ⚠
Berths	🛏 🛏 🛏 🛏
Length	7.84m / 25'9"
MTPLM	4500kg

794



Seatbelts	⚠ ⚠ ⚠ ⚠ ⚠
Berths	🛏 🛏 🛏 🛏
Length	7.84m / 25'9"
MTPLM	4500kg

874



Seatbelts	⚠ ⚠ ⚠ ⚠ ⚠
Berths	🛏 🛏 🛏 🛏 🛏
Length	8.96m / 29'5" Est
MTPLM	5000kg

884



Seatbelts	⚠ ⚠ ⚠ ⚠ ⚠
Berths	🛏 🛏 🛏 🛏
Length	8.96m / 29'5" Est
MTPLM	5000kg

894



Seatbelts	⚠ ⚠ ⚠ ⚠ ⚠
Berths	🛏 🛏 🛏 🛏
Length	8.96m / 29'5" Est
MTPLM	5000kg



Images for illustration purposes only. Please speak to your dealer to confirm final make up.

## ALL SWIFT COACHBUILT MOTORHOMES INCLUDE

- SMART construction system with 'PURE' timberless framing that's impervious to water
- GRP front low line pod with opening panoramic sunroof\*
- Daytime running lights
- Low energy LED lighting
- Cab Air conditioning
- Cruise control
- Electrically operated and tinted cab windows
- Driver and passenger captain chairs
- **NEW** Grey French Oak effect, high impact, scratch resistant floor lino
- Exclusive Duvalay Duvalite Alto mattress on all fixed and drop down beds\*
- Positive locker catches throughout for secure storage on the move
- Lounge seat and bed tops spring assisted for easy storage access (except travelling seats)
- Ultra-low energy LED lighting system with over-locker ambient lighting
- A minimum of four 230V chrome sockets

\*Except Edge range

## KON-TIKI FEATURES

- Fiat chassis cab in black metallic
- 140bhp engine (774, 784 & 794)
- **NEW** 180bhp engine (874, 884 & 894)
- **NEW** enhanced exterior graphics scheme
- Stylish 16" alloy wheels
- 100W solar panel (two on 874, 884 & 894)
- Rear garage with access doors on both sides
- Twin reversing cameras with **NEW** rear reversing sensors
- 10" touchscreen with Apple carplay and android auto
- **NEW** heated windscreen (Defrost pack)
- Ultra-leather® Brisa soft furnishing scheme
- **NEW** Decorative Sangallo Elm woodgrain
- Thetford oven and grill and 3 burner gas hob with electric hotplate
- Dometic flatbed microwave
- Dometic 133 litre fridge (774, 784 & 794)
- Dometic 177 litre fridge (874, 884 & 894)
- Mapa electric rise and fall table
- **NEW** shaver socket
- Swift Command control system and Tracker (subject to subscription)
- **NEW** wireless phone charger pad



# THE SWIFT ADVANTAGE

There's no better feeling than stepping into your caravan or motorhome for a relaxing getaway. We've dedicated countless hours of research and development to ensure that every detail of your caravan or motorhome is built to last and luxuriously comfortable, so you can get on with the important things in life – making smiles and enjoying unforgettable holidays.



SUBJECT TO T&C's

## LONG TERM WARRANTIES

Extra reassurance with multiple warranties including an industry leading 10 year bodyshell warranty on caravans and coachbuilt motorhomes\*

\*Terms and Conditions apply



## GRADE 3 INSULATION

Swift caravans and motorhomes are tested to the extreme in a cold chamber to ensure they can keep you warm and comfortable whatever the weather. Rigorous testing for heating and insulation ensures you stay warm all year round.



## SMART CONSTRUCTION SYSTEM

The UK's leading modern construction system with 'PURe' timberless framing that's impervious to water.





***SUPERSURE***  
**INSURANCE**



# INSURE YOUR SMILES

Exclusive insurance for Swift Caravans and Motorhomes. Take advantage of wide cover backed by a leading UK insurer, RSA. Grab big savings for many of Swift's standard fit security devices.

Visit **[www.supersureinsurance.co.uk](http://www.supersureinsurance.co.uk)**



Supersure is arranged and administered by Caravan Guard Limited, which is authorised and regulated by the Financial Conduct Authority.





# Motorhome Finance

**Black Horse offers two finance products to suit different customer needs:**

- Hire Purchase (HP)
- Personal Contract Purchase (PCP)

**In this guide, we'll explain each product so you can decide which one is right for you.**

HP and PCP are subject to status and only available to UK residents aged 18 and over.

Finance is provided by Black Horse Ltd, St William House, Tresillian Terrace, Cardiff CF10 5BH.

Black Horse Ltd is authorised and regulated by the Financial Conduct Authority. Black Horse Ltd is part of Lloyds Banking Group. Availability of products may vary by dealer and vehicle type

**blackhorse** 

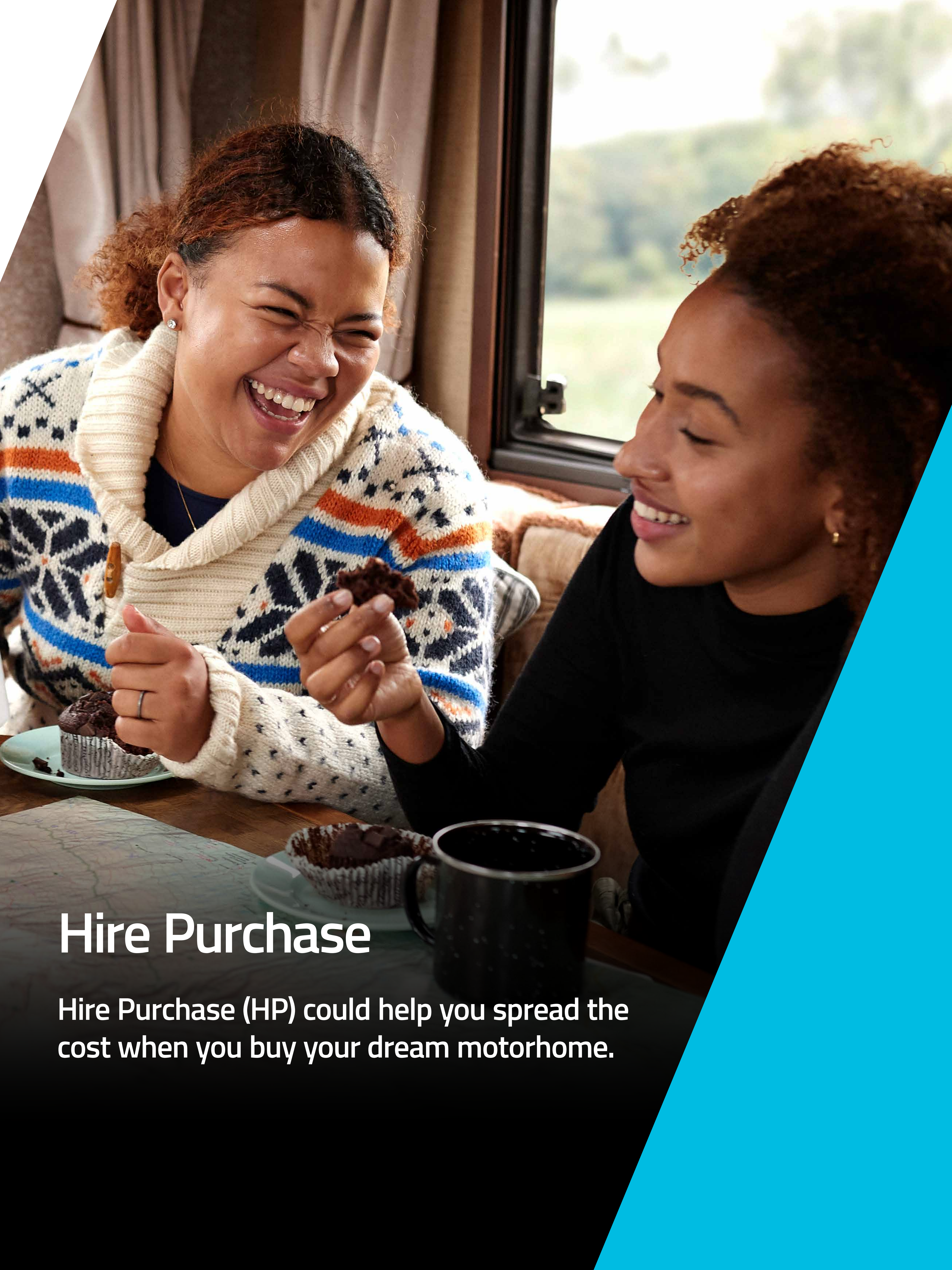


# Our Products

	HP	PCP
New and used vehicles	✓	New motorhomes
Length of Agreement	From 1-10 years	From 1-5 years
Deposit/Initial Payment Required	✓ £0 deposit may be available	✓ £0 deposit may be available
Fixed Monthly Repayments	✓	✓
Optional Final Repayment at Agreement End	✗	✓
Maximum Annual Mileage	✗	8,000 per year
Maximum Permitted Age of motorhome at Agreement End	Typically 20 years	5 years
Ownership Option at Agreement End	✓	✓ After optional final repayment is paid
End of Contract Goods Return Option	✗	✓ Return conditions apply
Mileage and condition restrictions/ charges (If you exceed agreed mileage or the Motorhomes not in good condition upon return)	✗	✓ Return conditions apply
Ability to amend annual mileage in life	✗	✗
Voluntary Termination	✓ Return conditions apply	✓ Return conditions apply
Early Settlement Option	✓	✓
Fully Comprehensive Insurance Required	✓	✓
Ability to Amend Monthly Payment Due Date	✓ Once every 12 months	✓ Once during the agreement

 The motorhome is at risk of repossession if you do not maintain contractual repayments





# Hire Purchase

Hire Purchase (HP) could help you spread the cost when you buy your dream motorhome.





# Hire Purchase

## How it works

- You agree an initial deposit, an agreement term of 1-10 years, and monthly repayments with your dealer.
- Your dealer takes your deposit out of the total price of the motorhome.
- You pay the remaining balance, plus interest, in equal monthly repayments over your agreed term.
- Black Horse buys the motorhome on your behalf. That means we own the motorhome for the length of your finance agreement.
- When you've made all the repayments, including any interest, you become the owner of the motorhome.

---

## More details

**Flexible deposit options:** £0 deposit may be available.

**Fixed interest rate and monthly repayments:** You'll make the same monthly repayment throughout your agreement term, with a fixed interest rate.

**End of agreement:** You'll own the motorhome after you've made all the repayments, including interest. We include a purchase fee of £10 as part of your final repayment.

**For full details, please speak to a representative or go online at [blackhorse.co.uk/caravan](https://blackhorse.co.uk/caravan)**

---



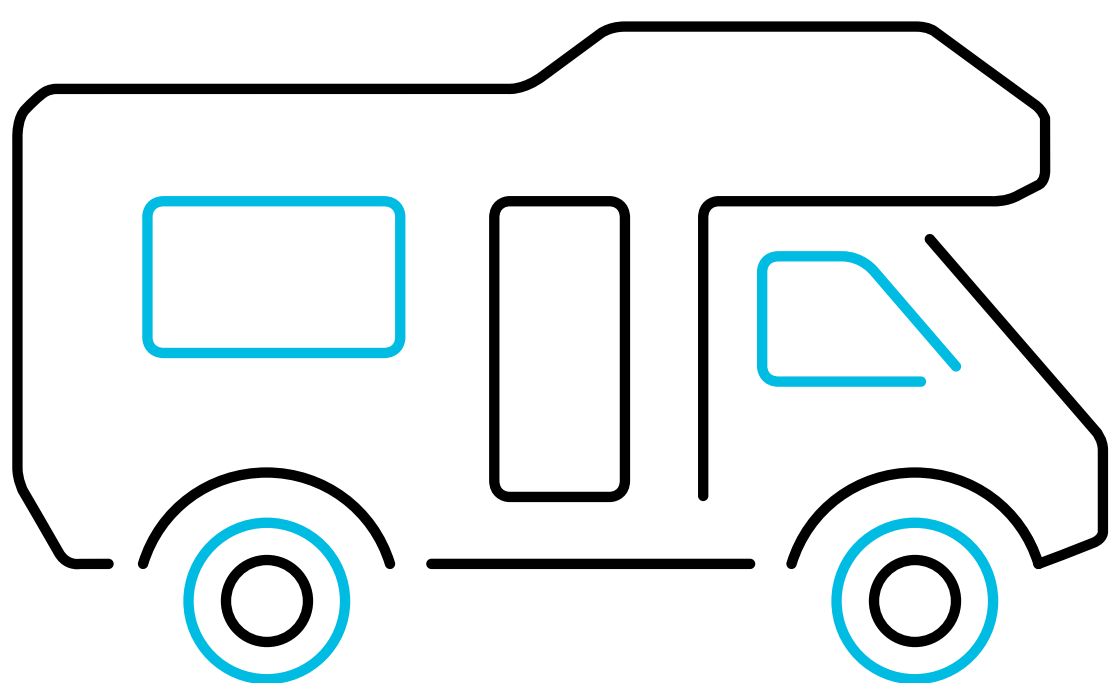


# Personal Contract Purchase

Personal Contract Purchase (PCP) can help you buy your dream motorhome in lower monthly instalments than Hire Purchase. With PCP, you can choose to wait and pay off a large portion of your total repayment amount in an optional final repayment.

However, you will pay more interest on a PCP agreement than an HP agreement for the same loan amount, term and APR.\* This is because the amount you owe reduces more slowly due to the optional final repayment.





# Personal Contract Purchase

## How it works

- You agree an initial deposit and an agreement term of 1-5 years with your dealer.
- Your dealer works out your monthly repayment amount and optional final repayment amount. This is based on the anticipated value of your motorhome at the end of your agreement.
- Black Horse buys the motorhome on your behalf and owns the motorhome for the length of your agreement.

**End of agreement:** You can choose to either part exchange, return the motorhome or pay the optional final repayment to own it. These options may be subject to fees, charges or status. Your motorhome could be worth less than the optional final repayment, leaving you with a shortfall to pay before you can start a new agreement. If you choose to return your motorhome we'll assess its condition, allowing for fair wear and tear.

---

## More details

**Flexible deposit options:** £0 deposit may be available.

**Fixed interest rate and monthly repayments:** You'll make the same monthly repayment throughout your agreement term, with a fixed interest rate.

**End of agreement:** You choose to either part exchange, return the motorhome or pay the optional final repayment to own the motorhome.

**For full details, please speak to a representative or go online at [blackhorse.co.uk/caravan](https://blackhorse.co.uk/caravan)**

---





From just **£990.21 per month.** Plus deposit.

# What your Hire Purchase agreement will look like

Make and model description

**Swift Kon-Tiki 874**

## Representative example

Monthly repayments

**120 Months                      £ 990.21**

Purchase fee (included in final monthly repayment)

**£ 10.00**

Cash price

**£ 109,990.00**

Agreement duration (months)

**120**

Deposit/Part exchange

**£ 30,000.00**

Interest rate (fixed)

**8.46 %**

Total amount of credit

**£ 79,990.00**

Representative APR

**8.8 % APR**

Total amount payable

**£ 148,825.75**

Credit is available to UK residents aged 18 years or over, subject to status.  
Finance offer only available through Black Horse Ltd, St William House, Tresillian Terrace, Cardiff CF10 5BH.





From just **£1,020.22 per month.** Plus deposit and optional final repayment.

# What your Personal Contract Purchase agreement will look like

Make and model description

**Swift Kon-Tiki 874**

## Representative example

Monthly repayments

**60 Months                      £ 1,020.22**

Total amount payable

**£ 136,541.20**

Optional final repayment

**£ 43,328.00**

Purchase fee (a purchase fee is included in the optional final repayment)

**£ 10.00**

Cash price

**£ 109,990.00**

Agreement duration (months)

**61**

Deposit/Part exchange

**£ 32,000.00**

Interest rate (fixed)

**8.46 %**

Total amount of credit

**£ 77,990.00**

Representative APR

**8.8 % APR**

Credit is available to UK residents aged 18 years or over, subject to status.  
Finance offer only available through Black Horse Ltd, St William House, Tresillian Terrace, Cardiff CF10 5BH.