

Holiday Home Owner's Handbook



Swift Group Limited, Dunswell Road, Cottingham, East Yorkshire HU16 4JS.
Tel: 01482 875740 Fax: 01482 840082
email: enquiry@swiftgroup.co.uk website: www.swiftholidayhomes.co.uk
A MEMBER OF THE SWIFT GROUP

Issued August 2010

1711419

CONTENTS

Introduction	1
Warranty and After Sales	5
Siting	9
Safety	15
Heating and Cooking	29
General Care and Maintenance	37
Technical Information	55
Index	88

INTRODUCTION

Introduction	2
Owner's Certificate	3

INTRODUCTION

THANK YOU FOR DECIDING TO BUY A NEW SWIFT CARAVAN HOLIDAY HOME.

WE ARE SURE YOU AND YOUR FAMILY WILL ENJOY MANY HAPPY HOURS OF COMFORT AND RELAXATION AND HOPE THE INFORMATION IN THIS HANDBOOK WILL IMPROVE YOUR ENJOYMENT. IT HAS BEEN DESIGNED TO GIVE YOU A GENERAL GUIDE TO THE CARE, SAFE USE AND MAINTENANCE OF YOUR CARAVAN HOLIDAY HOME AND HELP PROTECT YOUR INVESTMENT

THE INFORMATION CONTAINED WILL ANSWER MOST OF YOUR QUERIES, BUT IF THERE ARE ANY ASPECTS WHICH ARE NOT COVERED PLEASE CONSULT YOUR PARK OWNER, DISTRIBUTOR OR DEALER FOR FURTHER ADVICE. A DEDICATED AFTER SALES TEAM SUPPORTS THEM AND, TOGETHER, WE AIM TO GIVE YOU MANY YEARS OF PLEASURE.

PLEASE NOTE THAT CARAVAN HOLIDAY HOMES ARE DESIGNED FOR HOLIDAY ACCOMMODATION AND NOT FOR PERMANENT RESIDENTIAL ALL YEAR ROUND USE.

OWNER'S CERTIFICATE

Please complete all details on form below for reference at a later date.

Manufacturer:	Swift Group Ltd	Owner's Name:
Model:		Home Address:
Identification Marking:	SG	
Key Number:		
CO Alarm (Date of Manufacture)		
CO Alarm (Date of Manufacture)		
CO Alarm (Date of Manufacture)		Tel No.
CO Alarm (Date of Manufacture)		Dealer Stamp:
Supplied and fully inspected before delivery by:	Dealer:	
	Address:	
	Tel No.	

This certificate identifies your Caravan Holiday Home accurately. Please produce this whenever you require a service, repairs or when ordering additional accessories.

WARRANTY AND AFTER SALES SUPPORT

Warranty	6
Aftersales Support and Service	7

WARRANTY

All the illustrations and descriptive matter in this handbook are intended to give a general idea of the holiday home. Changing market and supply situations and our policy of continuous product development may prevent us from maintaining the exact specifications detailed in this handbook. We therefore reserve the right to alter specifications as suitability of materials and conditions demand.

Dealers and Park Operators are not agents of Swift Group Limited, the manufacturer of Swift Group holiday homes, and have absolutely no authority to bind the manufacturer by any express or implied undertaking or representation.

All holiday homes have a one year SuperSure manufacturer's warranty from the date of transfer in an unused state by an approved Swift Group Dealer or Park Operator to its first owner.

During the warranty period, subject to the exclusions set out in this section of the handbook, the manufacturer, Swift Group Limited, will repair or replace all defective parts of the holiday home or will arrange for component suppliers to repair or replace defective items.

The manufacturer will honour the warranty for 12 months from the date of the transfer

noted above, provided that the holiday home has been sited in accordance with Swift recommendations and the Code of Practice for the Transportation, Siting and Commissioning of Caravan Holiday Homes. (Consult your Dealer or Park Operator if you wish to see a copy of this code of practice).

The warranty covers faults arising from a manufacturing defect but specifically excludes the following:-

- faults which are a result of normal wear and tear
- faults relating to glass, tyres, fluorescent tubes, replacement light bulbs, spotlights, tap washers, thermocouples and the cosmetic appearance of sealants
- faults arising from accidental damage or damage caused by misuse of any component part of the holiday home
- failure of parts or components resulting wholly or partly from the fitting of any parts which are not approved by Swift Group Ltd.
- failure of parts or components resulting wholly or partly from toxic, explosive or other hazardous properties of any materials or substance brought into the holiday home
- cleaning or adjustment of any assemblies

Swift Group will not accept liability for any indirect or consequential losses that you may suffer as a result of a manufacturing defect.

The warranty will be invalidated if the holiday home has been neglected, misused or modified in any way or if the identification marks have been removed or defaced. The warranty only applies to holiday homes purchased and sited in the UK.

The cost of transporting or moving the holiday home by any means to or from the place of repair is the responsibility of the owner.

You have legal rights under UK law governing the sale of consumer goods. This warranty does not affect your legal rights.

The name and address of the warranty provider is:-

Swift Group Limited, Dunswell Road, Cottingham, East Yorkshire, HU16 4JS

Any claim under this warranty must be made through your supplying Dealer or Park Operator. Claims for repair or replacement under this warranty must be made within 28 days of discovery of the fault. Submission of a claim does not constitute any liability on the part of Swift Group Ltd until the claim has been approved and agreed.

AFTERSALES SUPPORT AND SERVICE

Please note that all after sales enquiries must be directed through your supplying Dealer or Park Operator. The After Sales service at the factory is geared to supporting our Dealer/Park Operator network, as is the service provided by the appliance manufacturers.

In the interests of safety, replacement parts for an appliance must conform to the appliance manufacturer's specifications and should be fitted by them or their authorised agents.

Note: please remember to quote the chassis number when ordering any items from your Dealer/Park Operator.

SITING

Craning 10

Siting 10

Snow Loading 12

Chassis Specification 13

Siting

CRANING

Given the high risk involved in craning operations, the legal requirements are particularly strict. Therefore, it is recommended that when a crane is to be used for lifting a caravan holiday home, then a specialist craning contractor is employed to undertake a 'Contract Lift'.

The contract lift must be organised through a reputable company which holds adequate insurance for all their operations, including liability cover for the caravan holiday home being lifted. If a specialist craning contractor is employed to undertake a 'Contract Lift', the park/ distributor is nevertheless obliged to have in place documented craning procedures and ensure that all persons involved with the instigating or the supervision of any craning work are fully conversant with such procedures.

Procedure

Selection of Nominated Contractor: – It is strongly recommended that the following information is obtained before any work can commence:-

A copy of the Craning company's Health and Safety Policy

Detailed, technical risk assessments relevant to lifting caravans and to that specific lift (including wind loading, load spread, appropriate slinging method, etc.

A copy of method statements as to how the work will be undertaken

Copies of training records for all competent persons

Copies of all test certificates received

Copy of segregation procedures received

Signed agreement from the nominated contractor to adhere to the hiring company's Contractor Code of Conduct

Copy of Public Liability insurance (Minimum cover £5 million and in date)

SITING

Your caravan holiday home should be sited on a correctly prepared standing of suitable material, which must provide adequate support for the caravan holiday home placed upon it.

Methods of siting vary and are dependent upon the ground conditions and specific requirements set by the local authority site licence.

Manufacturers advise on the correct method of support of the caravan holiday home. Traditionally, caravan holiday homes have been supported centrally on blocks located under the axle and at each end on the corner steadies. Some of the larger, longer caravan holiday homes require additional support or axle stands under the intermediate points indicated by the manufacturer's instructions. Jacks, blocks or stands should be placed

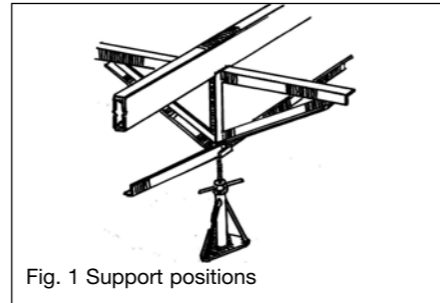


Fig. 1 Support positions

under the chassis in line with vertical chassis members (Fig. 1 illustrates the correct position). All supporting points should have a level finish.

When correctly positioned on the pitch with the corner-steadies lowered, the caravan holiday home should be carefully jacked up at the manufacturer's defined support points, jacking one side at a time. A suitable load bearing block should be placed under the main axle(s), inboard of the wheel, leaving the wheel clear of the base (i.e. non-load bearing). The supporting blocks should equally share the load in the case of twin axles. The corner steadies can then be extended on either side to ensure that the caravan holiday home is stable.

Only support points clearly defined by the caravan manufacturer and identified by a permanent yellow mark, should be used to lift the caravan holiday home. Where possible, until the unit is accurately located on the pitch and the axle(s) adequately supported to ensure stability, the caravan holiday home unit should be left securely attached to the towing vehicle. Where this is not possible, all the corner steadies should be wound down in contact with the base and wheels chocked to prevent the caravan holiday home from rotating about the jack. Special care should be taken by the operatives when placing the load bearing block under the axles. Support by jack only should not be practiced.

When both sides of the axle(s) have been jacked up correctly, all intermediate axle stands positioned, and the corner steadies adjusted, the caravan holiday home should be levelled laterally and longitudinally, using a spirit level as close to the centre of the unit as practicable.

NOTE: IT IS RECOMMENDED THAT ADDITIONAL AXLE STANDS ARE FITTED FOR LARGE UNITS AND DOUBLE GLAZED MODELS, PARTICULARLY ADJACENT TO EXTERNAL DOORS.

Hardwood packing can be used when necessary to level the caravan holiday-home. All exterior doors should be checked for clearance and adjusted where possible by using the corner steadies and/or the axle stands. An alignment check should be carried out after four weeks to ensure that, if the caravan holiday home has settled, the level is adjusted as required

In certain locations it may be necessary to anchor the caravan holiday home to the ground. If anchors are fitted, they should be inside the front and rear outrigger on the inside of the main longitudinal chassis member, using recognised ground anchors (Fig. 2 below). All Swift units have specific holding down points on the caravan holiday home, which are located, approximately 1m from the ends of the main longitudinal

Siting

chassis member at each corner (Figure 3 below). Parks should consult their insurance company with regard to this requirement.

When the Caravan Holiday Home is level and supported in all directions the corner steadies can then be lowered for added stability.

SNOW LOADING

To comply with the requirements of EN1647 Section 2 for snow loading, the following method of supporting the caravan holiday home when sited must be carried out.

The main longitudinal chassis beams should be supported by concrete blocks where cross braced on either side of the axle. An axle stand should be placed underneath the cross bracing between the concrete blocks and the corner steadies in four positions as shown on the diagram.

Great caution should be used when cleaning snow from the roof of the holiday home.

All Swift models comply with snow loading Grade B.

Guide to Snow Loading Grades

- Grade A - Only in parts of the UK
- Grade B - All of the UK + France and Germany
- Grade C - Higher European Ground
- Grade D - Scandinavia and Northern Europe

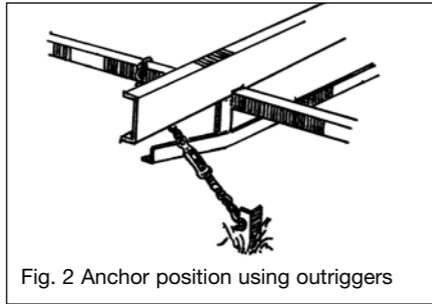


Fig. 2 Anchor position using outriggers

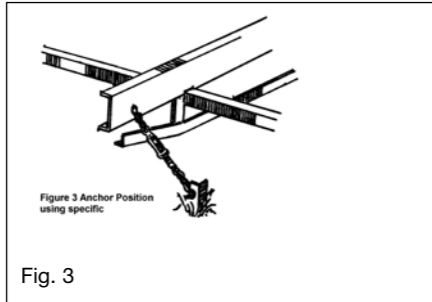
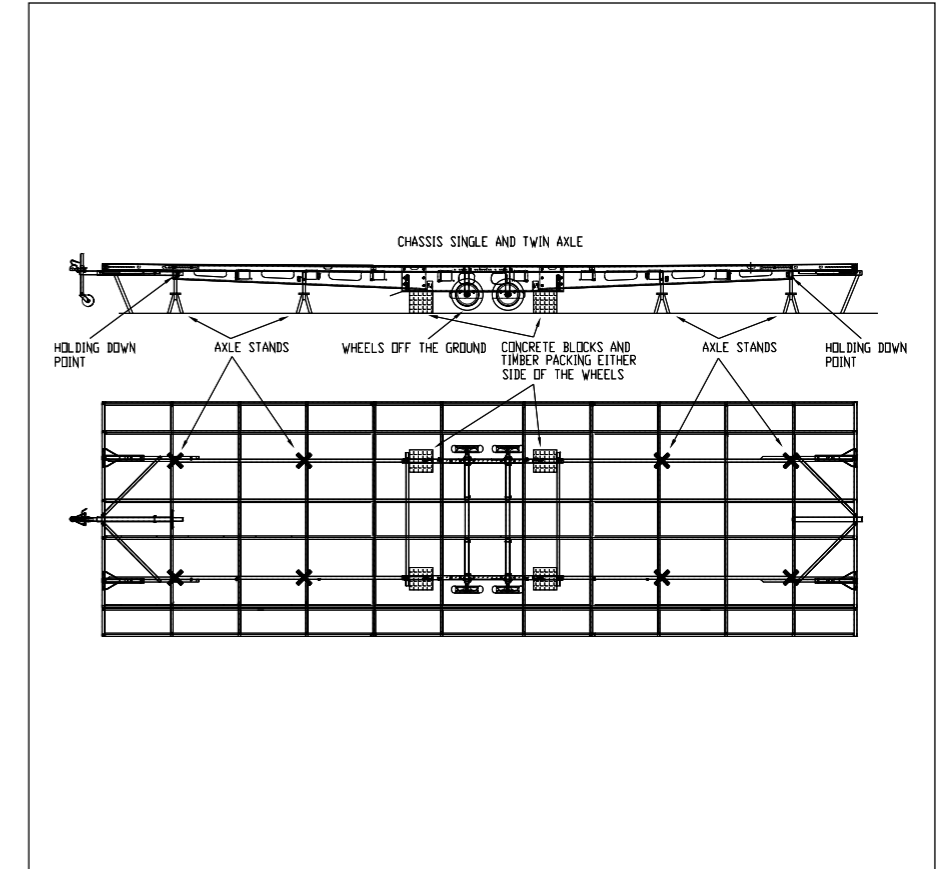


Fig. 3

CHASSIS SPECIFICATION

- All chassis are built to CoP 501/502 specification.
- Holding down points capable of resisting 10KN – located 1000mm +/- 200mm from the end of each longitudinal.
- Corner steady - maximum extended height of 432mm Corner steadies must not be used to fully support the unit
- Jockey wheel assembly maximum load that can be applied in a static position is 150KG.
- Hitch – cast iron with 50mm ball. The maximum vertical load of the coupling head is 2.5 tonnes.



SAFETY

General Advice	16
Fire Precautions	16
Smoke Alarm	17
Carbon Monoxide Alarm	20
Emergency Shut Off Points	21
Safe Use of LPG	21
Safe Use of Electricity	24
Cooking	25
Ventilation	26

Safety

GENERAL SAFETY ADVICE

Ensure you and your family know the locations of all means of escape emergency exits. (Refer to the layout drawing in the technical section of this handbook for your model).

Keep a torch handy for emergencies.

Never use a naked flame.

Position a fire blanket next to the cooker

Never leave pans of oil or fat unattended.

Combustible materials should be kept clear of all heating and cooking appliances

Never use portable gas heaters or appliances.

Do not leave young children unattended in the holiday home.

Keep matches out of reach of children

Turn off all appliances and the gas bottles if leaving the holiday home unattended for long periods.

Always be aware that a fire can re-ignite, even if you think it is extinguished.

Never allow modifications to appliances, electrical and LPG systems except by a qualified person.

WARNING: Never use portable cooking or heating equipment other than electric heaters that are not of the direct radiant type, as it is a fire and asphyxiation hazard.

WARNING: Appliances such as cookers must not be used for heating.

WARNING: Provide one dry powder fire extinguisher of an approved type or complying with EN 3, of at least 1kg capacity, by the main exterior door and a fire blanket next to the cooker. Familiarise yourself with the instructions on your fire extinguisher and the local fire precaution arrangements.

WARNING FIRE HAZARD: DO NOT USE THE VOID OF THE CHIMNEY BREAST FOR STORAGE THIS AREA MUST BE CLEAR AT ALL TIMES

FIRE PRECAUTIONS

Important: Your attention is drawn to the notice affixed inside the holiday home advising on fire precaution, ventilation and what to do in case of fire.

IN CASE OF FIRE

1. Get everyone out of the holiday home as quickly as possible using whichever exit is the quickest, including windows. Do not stop to collect any personal items.
2. Raise the alarm. Call the Fire Brigade.
3. Turn off the gas supply valve and remove the cylinders if it is safe to do so.
4. If connected to the mains electrical supply, disconnect or switch off at the pitch supply point.
5. Do not use water on fat or electrical appliances.

SMOKE ALARM

This is approved by The National Caravan Council. The NCC requires that all new or used holiday homes sold by its members are fitted with a smoke alarm featuring an alarm silence facility.

MODEL- SI 601 SMOKE ALARM OPERATION

Normal condition

The red LED on the front should flash once every 40 seconds to show the alarm is active.

Low Battery Condition

IMPORTANT: Your smoke alarm requires a battery with a sufficient capacity of power to operate correctly. This must also be correctly installed.

Should your smoke alarm enter a low battery condition, the unit will emit an audible 'chirp' once every 40 seconds. When this occurs you must replace the battery immediately. Your smoke alarm will continue to warn of this low battery condition for at least 7 days, however, failure to change the battery after this time would mean your smoke alarm has insufficient power to alert you in a real fire situation.

BATTERY REPLACEMENT

IMPORTANT: Only the following batteries

can be used for replacement. Use of a battery other than those recommended below may have a detrimental effect on the detector's operation. Use of a lithium (long-life) battery could provide power for 10 years under normal operating conditions, meaning there is no need for an annual battery change.

Carbon-Zinc type:

Eveready Energizer 1222; Gold Peak 16045 (UL).

Alkaline Type

Energizer 522; Duracell MN 1604; Duracell 9V Ultra; Energizer 9V Ultra+; Gold Peak 1604A.

Lithium (long life) type

Ultralife U9VL.

1. Remove the alarm from its mounting plate by turning anti-clockwise



2. Remove the existing battery and replace with a new battery. from the list on this page, making sure that the positive and negative connections are in the correct position. If unsure see diagram in "3. Install 9v battery" section (Page 12 of the alarm user manual).



3. Replace the alarm on its mounting plate, lining up the large central vent on the front of the alarm, with the 'X' that is moulded into the plastic on the mounting plate (if unsure see page 13 of the alarm user manual). Ensure the unit is securely fitted.



Safety

4. Test your alarm as explained in the next section 'Alarm Test'.

ALARM TEST

1. Press the test button in the centre and release.



2. The unit will emit a loud (85dB at 3 meters) alarm for around 5 seconds and stop automatically.



3. The red LED on your alarm will flash rapidly during the audible signal.



NOTE: The test button accurately tests

the alarm's smoke sensing circuit, there is no need to test your alarm with smoke. If your smoke alarm fails to give an audible test signal, please refer immediately to the troubleshooting guide at the end of the user manual.

WARNING: Test your smoke alarm at least once per week

Your smoke alarm has been designed to be as maintenance - free as possible and although the unit requires only battery maintenance for its entire life, there are several things you must do to keep it working properly.

CAUTION: Your smoke alarm is a sealed electrical device and no attempt should be made to open the case. Attempting to open the case will invalidate your Warranty.

TESTING: Test your smoke alarm once every week see section 'Alarm Test' in the smoke alarm instruction manual. Any test failures should be reported to the Technical

Support Team details in alarm instruction manual.

CLEANING: As a minimum your smoke alarm should be cleaned once every 3 months using your vacuum cleaner fitted with the soft brush attachment.



WARNING: Your smoke alarm may false alarm when it is being cleaned using a vacuum cleaner.

IMPORTANT: Do not use solvents or cleaners on your smoke alarm, as they may cause damage to the sensor or circuitry. The unit can be wiped with a slightly damp cloth.

CAUTION: Do not paint the smoke alarm as this may block the openings and prevent smoke from entering the sensor.

WHAT TO DO IN CASE OF FIRE:

- If you have made a family escape plan and practiced it with your family you have increased their chances of escaping safely. Go over the following rules with your children each time you have fire drills. This will help everyone remember them in case of a real emergency.
- Don't panic, stay calm. Your safe escape may depend on thinking clearly and remembering what you have practiced.
- Notify every member in the residence of the fire.

FIRE EXTINGUISHER

It is recommended that a 1kg (2lb) minimum capacity dry powder fire extinguisher is kept inside your holiday home at all times.

When using a dry powder extinguisher it is suggested that the holiday home be evacuated until the powder has settled, to avoid inhalation.

Always aim the fire extinguisher at the base of the fire not at the flames.

Never use a powder extinguisher on a pan of fat or oil, only use a fire blanket on pan fires.

WARNING: Provide one dry powder fire extinguisher of an approved type or complying with ISO7165, of at least 1kg capacity, by the main exterior door and a fire blanket next to the cooker. Familiarise yourself with the instructions on the fire extinguisher and the local fire precaution arrangements.

CHILDREN

Do not leave children alone in the caravan in any event. Keep potentially dangerous items out of reach, as at home eg. matches, drugs, etc.

- Get out of the caravan as quickly as possible. Follow a planned escape route. Do not stop to collect anything or to get dressed.
 - Feel the doors to see if they are hot. If they are hot, do not open them - use an alternative escape route.
 - Stay close to the floor. Smoke and hot gases rise.
 - Cover your nose and mouth with a cloth (wet if possible). Take short, shallow breaths.
 - Keep doors and windows closed. Open them only if you have to in order to escape.
 - Meet at your planned meeting place after leaving the caravan. Carry out a headcount.
 - Call the Fire brigade on 999 from outside your caravan. If possible use a mobile phone or call box .
 - Give the address and your name.
 - Never go back inside the caravan until a member of the fire service has told you it is safe to do so.
- DO NOT** attempt to repair your smoke alarm doing so will invalidate your warranty. If your smoke alarm is not operating properly, see the next section 'Troubleshooting'. If you cannot solve the problem, please call the Technical Support line in the smoke alarm user manual.

Safety

CO-2588 CARBON MONOXIDE ALARM

WARNING: PLEASE READ THE FULL USER INSTRUCTIONS PROVIDED.

WARNING: DO NOT ATTEMPT TO CONNECT THE ALARM TO THE BASE PLATE WITHOUT INSTALLING THE BATTERY.

CO ALARMS DETERIORATE WITH AGE AND MUST BE REPLACED NO LATER THAN EVERY FIVE YEARS

CARBON MONOXIDE

Known as the silent killer, Carbon Monoxide is an invisible, odourless and tasteless gas.

What are the symptoms of carbon monoxide poisoning?

Early symptoms of carbon monoxide (CO) poisoning can mimic many common ailments and may easily be confused with flu or simple tiredness. Symptoms to look out for include:

- tiredness
- drowsiness
- headaches
- giddiness

- nausea
- vomiting
- pains in the chest
- breathlessness
- stomach pains
- erratic behaviour
- visual problems

ANYONE WITH THESE SYMPTOMS SHOULD IMMEDIATELY TURN OFF ALL APPLIANCES AND SEEK MEDICAL ATTENTION

MAINTENANCE

- The alarm should be cleaned using a vacuum or soft brush
- No detergents should be used to clean the casing
- CO alarms deteriorate with age and should be replaced no more than 5 years after the date of manufacture. Records of installation should be kept on the Owner's Certificate in the front of this handbook.

Safety

EMERGENCY SHUT OFF POINTS GAS

Isolation shut off valve for each appliance:

- **Hob/Oven/Grill:** Behind the plinth at the bottom of the oven housing.
- **Central Heating Combination Boiler:** Directly beneath the boiler.
- **Gas Space Heater:** Inside the removable hatch positioned in the side of the chimney breast

WATER

- **Exterior:** At the main feed pipe stopcock for the holiday home.
- **Interior:** At the stopcock under the floor.

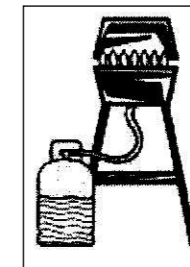
ELECTRICITY

- **Exterior:** Park supply box for you holiday home.
- **Interior:** At the RCD/RCCD mains inlet box.

SAFE USE OF LPG USING CYLINDERS

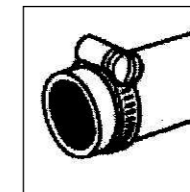
What happens inside the cylinder

Calor gas cylinders are specifically manufactured to store Liquefied Petroleum Gas (LPG for short) in its liquid state. The liquid turns to gas very easily and the gas fills the space above the liquid. As gas is drawn off in use, more liquid turns to gas to replace it. An external regulator connected to the supply line between the cylinder and appliance keeps the place pressure of the gas constant to the appliance as the cylinder empties until there is no liquid left to turn to gas.



The Regulator

Except for appliances fitted with a flow controller, a suitably rated regulator of a minimum of at least 3.5kg per hour, must be included in the connection between the cylinder and the appliance.



Safety

The regulator is precisely set to control the pressure of the supply and **MUST NOT BE ADJUSTED.**

Replace after 5 years of life, or when not working properly.

Flexible Hoses

Use only marked and certified hoses to BS3212 and which bear the year and name of the manufacturer and clips as LPG attacks and erodes natural rubber. Keep hose lengths as short as possible and less than 2 meters in length. All flexible hoses must be secured with proper hose clips. Make sure that the hoses are kept clear of 'hot spots' and inspect them from time to time. Replace any hose that shows signs of wear or damage.

Do's and Don'ts

- **Do** treat a cylinder with care to ensure that the valve is not damaged. A damaged valve could result in a leak.
- **Do** use a cylinder upright. If used horizontally liquid gas could get into the supply pipes with serious consequences.
- **Don't** attempt to disconnect a regulator from a switch-on valve (15kg and 7kg cylinders) if the flame does not go out when the regulator switch is turned off. Leave the appliance alight and call your Gas Supplier or Park Manager.

Safety

- **Don't** subject a cylinder to heat, because the pressure inside the cylinder could build up to a point beyond the designed safety limit.
- **Don't** store or use cylinders below ground level, because LPG is heavier than air. If there is a leak, the gas will collect at low level and become dangerous in the presence of flame or a spark.
- **Don't** store or use propane cylinders (red) indoors, because propane is contained under higher pressure and should only be kept outdoors.

THE GAS SYSTEM

Your Gas System will have been connected and commissioned by a registered CORGI engineer engaged by your Park or Siting Agent.

Use only propane LPG at a pressure of 37mbar.

Never use appliances with a different working pressure.

Gas cylinders are specially made to store the fuel in its liquid state. The liquid turns to gas very easily and gas fills the space above the liquid in the cylinder. As the gas is drawn off in use, more liquid turns to gas to replace it.

Propane remains fully operational down to temperatures as low as -43 degrees. There

are a variety of sizes and shapes of cylinders in which the gasses are stored. Consult your park owner who will advise you on the amount of gas needed based upon your holiday home specification and your particular family or individual requirements.

Gas Regulators

Gas cannot be supplied from a bottle without some sort of gas regulation. The connection must be by high pressure flexible hose which shall be as short as possible. The gas regulator supplies gas to the gas appliance at a constant pressure independent of gas flow.

Ensure the regulator is of the correct pressure rating for the gas appliances in your holiday home. Your dealer or gas supplier will advise you of the type of regulator required.

Regulators should be kept clean and dry and changed approximately every 5 years or earlier if not working properly.

THE REGULATOR CAPACITY SHOULD HAVE A MINIMUM RATING OF 3.5KG PER HOUR WITH A WORKING PRESSURE OF 37 Mbar. NEVER USE APPLIANCES WITH A DIFFERENT WORKING PRESSURE

Gas Inlet

The inlet connection is the beginning of the holiday home's gas system. It will be found at the rear of the holiday home.

Cylinders

A gas cylinder must always be operated standing on its base. A cylinder on its side could allow liquid gas into the supply pipes with very serious consequences. Never apply heat to a cylinder; this could cause a build up of pressure beyond the design limit. Treat the cylinder with care as a damaged valve could result in a leak.

GAS SAFETY

- LPG is a heavy gas and therefore sinks to the lowest point.
- If there is insufficient ventilation a spark could result in an explosion.
- Do not store or use propane cylinders indoors, it is contained under high pressure and should only be kept outdoors and never stored below ground level.
- LPG is odourless so the manufacturers add the distinctive smell to act as a warning if a fault should occur.
- If you suspect a gas leak, extinguish all flames, turn off the gas at the bottle and ventilate the holiday home by opening doors, windows, and cupboards. Do not

Safety

operate fans, lights or other electrical apparatus. Get outside for a few minutes and consult your park operator.

- It is vitally important that you read all instructions and labels before using any appliance and keep them handy for future reference.

IF IN DOUBT ASK.

Do not place clothes or any other combustible material on, over or near any gas appliances, such as fires, cookers or water heaters. Apart from the fire hazard, their presence could affect the appliance and negate any guarantee.

Do not use appliances in any way other than their intended use. Cookers are for cooking NOT heating.

ALWAYS REMEMBER - Gas appliances that are designed, installed and used correctly, regularly serviced and properly ventilated and flued are completely safe

**WARNING:- FIRE HAZARD
Never use portable cooking or heating equipment inside your holiday home, other than electrical heaters that are not a direct radiant.**

GAS

- Always use a CORGI registered gas fitter for any work or modification to your gas system or appliances.
 - Make sure that heating, cooking appliances and gas cylinders are switched off before you leave the holiday home.
 - Make sure that there are no naked lights when changing the gas cylinder.
 - Make regular checks of the flexible gas hose.
 - Never look for a gas leak with a match or cigarette lighter. If you suspect a leak, call in a CORGI registered fitter who will use a safe and appropriate method of locating and repairing the leak.
 - Keep everything clean, particularly the gas jets within each appliance. When not in use, keep the gas inlet protected.
 - Never use additional independent gas appliances inside the holiday home
 - The flue installation for all appliances should be inspected at least once a year, throughout its length, for corrosion. If any sign of corrosion is found it must be replaced immediately with the correct type and by a registered fitter. To inspect the gas flue, the engineer will remove the self tapping screws which hold the inspection panel(s) at high and/or low level.
- ### CARBON MONOXIDE - THE FACTS
- When gas does not burn properly, poisonous carbon monoxide fumes may be produced.
 - You cannot see or smell carbon monoxide fumes. They are invisible, odourless, colourless and tasteless.
 - Fumes from partially burnt gas kill more people than fires and explosions from unburnt gas.
 - Faulty gas appliances, poor ventilation and incorrect flues may produce carbon monoxide.
 - The danger signs on gas appliances are stains, deposits of soot and excessively yellow or orange flames
 - Carbon monoxide can cause drowsiness, dizziness, headaches, watering eyes, chest pains or palpitations, sickness, stomach pains or diarrhoea. Unfortunately, these are vague symptoms produced by many other causes such as influenza and food poisoning.
 - You should seek medical advice if you persistently suffer from any of the symptoms listed above after being in a room where any gas burning appliance is in use, and of course have your gas installation checked by a competent installer.

Safety

- Remember, gas appliances which are designed, installed and used correctly, regularly serviced, and properly ventilated and flued are completely safe.
- Consider the installation of a suitably certified carbon monoxide detector.

WARNING: Inside outlet sockets shall only be used with dedicated appliances i.e. equipment supplied with the holiday home. No gas appliance shall be used outside when connected to an inside socket.

SAFE USE OF ELECTRICITY

- Always use an NICEIC registered electrician for any work or modification to your electrical system or appliances.
- Ensure that you understand the working of all electrical switches in your holiday home.
- Regularly check that all electrical cable terminal connections are firm and secure. Check exposed cables for wear and damage.
- Keep spare appliance fuses handy.

“Remember don’t touch if you don’t understand it,”

- Always seek advice from your park manager or a qualified electrician.
- **As a general rule, all cables run vertically to the ceiling from the visible point of termination. However, you should always check with a cable finder before drilling, screwing, nailing etc.**

Please pay particular attention to this on a partition wall where there is an electrical termination point on the other side.

WIRING

Holiday homes fitted with both gas and mains electricity only have a maximum current rating of 40amps. The achievement is conditioned by the supply to the holiday home.

The socket circuits are wired by 3 radial mains circuits using 1.5mm 3 core flexi cable protected by a 10amp MCB. The lighting circuits are wired as a radial circuit using 1mm 3 core flexi cable and are protected by a 6amp MCB. All electric fires are plugged in at the back of the fire; combination boiler is wired in 2.5mm flexi cable protected by 16amp MCB.

Oven and fridge circuits are wired in 2.5mm flexi cable 3 core, protected by a 16amp MCB.

The electrical supply to your holiday home on some holiday parks is restricted. Please check with you park manager before using additional appliances within your holiday home. In case of doubt consult the park owner or his agent.

The Residual Current Circuit Breaker (RCCB) or Residual Current Device (RCD) serves as the main switch for your holiday home. It is also the main emergency shut off switch for your holiday home. It is a safety device designed to protect you from the possibility of shocks that could arise from a faulty

power pack supply, faulty appliance or a fault on the holiday home causing the current to run to earth.

The RCD has been factory tested for correct operation. The RCD should be tested each time you switch on the mains supply and/or every month.

- With the supply connected, switch RCD to ON.
- Press test button marked ‘T’.

Unit should now ‘trip off’. If so, reset the system by switching on again. If the unit does not ‘trip off’ do not use the mains supply until the fault is corrected – consult your park owner or qualified electrician. If the unit ‘trips off’, other than during test, again do not attempt to use the mains supply – there is a fault which needs expert attention. In case of difficulty consult an approved electrical installation contractor. It is dangerous to attempt modifications and additions yourself. Preferably not less than once a year, the electrical installation should be inspected and tested and a report on its condition obtained as prescribed in the Regulations for Electrical Installations, published by the Institute of Electrical Engineers.

MAINS ELECTRICITY AND FAULT FINDING

Symptom:

No mains electric working in the holiday home.

- Is the RCD and miniature electric circuit breakers (MCB) switched on?
- Is the holiday home connected to park supply?
- Park supply switched on?

Symptom:

The RCD or MCBs trip out after the holiday home is switched on at the park supply.

- Disconnect appliances in holiday home and reset MCBs.

Symptom:

If the RCD and/or MCBs still trip out.

- There is a fault on the electrical circuit or the circuit is overloaded. Consult your park owner or qualified electrician before using mains supply.

Symptom:

The RCD or MCBs do not trip when tested.



Safety

- There is a fault on the electrical circuit. Do not use the mains supply until the fault is corrected. Consult your park owner or qualified electrician.

BULBS

It is important to fit the correct wattage lighting bulbs. The maximum bulb size can be found on the light fitting or lamp holder.

COOKING

GAS OVEN / GRILL / HOB

WARNING: Accessible parts may be hot when the oven, grill or hob is used. Remember, it is dangerous to use an appliance without reading the manufacturer’s instructions.

Cooking Equipment - Be Safe Not Sorry

- When you are cooking, keep children away from the vicinity of the appliance.
- Keep all flammable materials (such as curtains, furnishings and tea towels) away from the appliances.
- When you are cooking it is essential to provide additional ventilation such as opening a window near to the cooking appliance.

Safety

- Do not allow fat to build up in a grill pan, this creates a fire hazard.
- Do not use the oven with the door inner glass panel removed (glass oven doors only).
- Parts of the appliance may be hot during or immediately after use.
- Allow sufficient time for appliance to cool after switching off.
- Do not drape tea towels over flue vents as this creates a fire hazard.
- Be careful when opening any appliance door as steam may escape from the cooking.
- Using aluminium foil on the hob or to cover the grill pan, or placing items wrapped in foil under the grill can create a fire hazard.
- Use oven gloves when removing hot food utensils from the oven or grill.
- Do not use foil to line oven shelves or grill pan, or allow it to line oven flue, as this creates a fire hazard and hinders circulation
- When cooking heavy items, e.g. turkeys do not pull the oven shelf out with the item still on the shelf.
- If the cooker has a storage compartment below the oven, this should only be used to store oven furniture.
- Do not store any flammable materials in this compartment.
- When cooking with fat or oil, never leave unattended.
- Turn pan handles inward so they are out of reach of children and cannot be caught accidentally.
- Use pans with a flat base of minimum 100mm/4ins diameter, and a maximum 230mm/9ins diameter which are stable in use.
- Avoid using double pans, any old miss-shapen pans or any pan that is unstable when placed on a flat surface.
- Position pans over the centre of the burners.
- Glass hob lids may shatter when heated, turn off all burners and allow to cool before lowering.
- Never use the appliance for heating a room. When you have finished cooking check that all controls are in the off position.

VENTILATION

Your holiday home complies with BS EN 721. The ventilation points on your holiday home are fixed points of ventilation which are required by the European Standards.

All holiday homes have ventilation at high level and low level which have been calculated to suit the individual needs of your holiday home.

All high level ventilation is achieved by means of roof ventilators. Low level ventilation in the main living area is positioned underneath a unit in the kitchen area venting directly into the living area. Low level bedroom ventilation is positioned underneath the fitted wardrobes.

It is advised that fixed ventilation points are checked and cleaned (if necessary) on a regular basis using a small brush and a domestic vacuum cleaner.

Additional night time ventilation is obtained by releasing the window catches and placing them in the second groove.

Note the windows are not sealed from rain in this position.

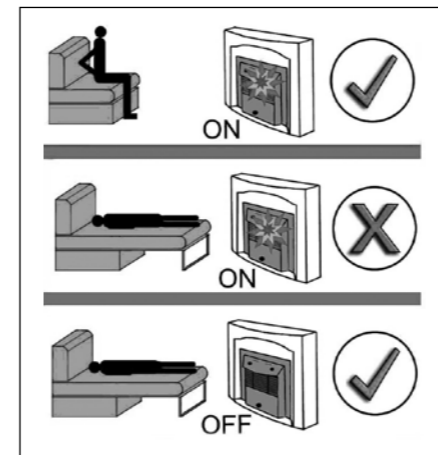
As the ventilation levels are calculated to suit each model requirements, there should be no modifications made which may result in reduced ventilation levels.

Safety

For approximate locations refer to the holiday home drawing in the technical section of the handbook.

WARNING: Under no circumstances must any ventilator be blocked or obstructed even partially.

WARNING: Care must be taken when using a Pull-out bed in close proximity to the space heater



HEATING AND COOKING

Central Heating and Hot Water System	30
Appliances	36

Heating and Cooking

BEFORE USING APPLIANCES PLEASE READ THE USER INSTRUCTIONS SUPPLIED.

NOTE: In the interest of safety, replacement parts for an appliance must conform to the appliance manufacturer's specifications and should be fitted only by them or their authorised agent.

CENTRAL HEATING AND HOT WATER SYSTEM

PLEASE READ THE USER INSTRUCTIONS.

CAUTION: - The boiler can produce water at over 80°C when in central heating mode. If you run a hot tap when the boiler has been heating the radiators, the initial flow through the hot tap could be very hot. DO NOT PLACE YOUR HANDS under the tap or use the shower until the initial flow has passed.

The thermal grade of your holiday home is Grade 2 with Central Heating & Grade 1 Without Central Heating:-

The definition of a Grade 2: A caravan holiday home, including windows, doors and

roof lights in which the average thermal transmittance (U) of the elements shall not exceed 1,7 W/(m².K).

An average temperature difference of at least 20 K between inside and outside temperatures shall be achieved in lounge, dining room and kitchen, when the outside temperature is 0°C

The definition of a Grade 1: A caravan holiday home, including windows, doors and roof lights in which the average thermal transmittance (U) of the elements shall not exceed 1,7 W/(m².K).

There is no grade for this heating

Radiator valves

The TRV features a discreet locking and limiting facility allowing users to set and lock in place to a pre-determined temperature, or temperature range.

TRVs control room temperature from 0°C to 28°C and incorporate a positive shut off

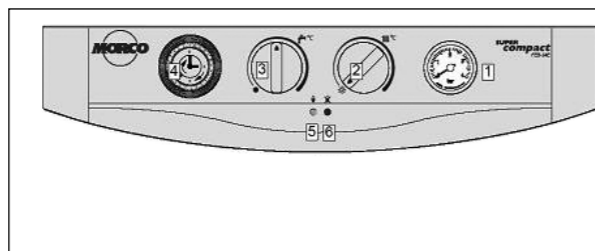
OPERATION

Limiting the maximum setting

A feature of the TRV is the ability to limit the maximum setting. To achieve this, attach the thermostatic head and set the temperature to the maximum desired position. Remove the black retention pin, found underneath the setting arrow, and re-insert into the slot directly underneath position IIIII. The temperature adjustment has been limited to the set point.

Locking a predetermined setting

To lock a predetermined setting carry out the limiting maximum setting procedure as detailed above. Then remove the retention pin positioned under setting IIIII, and replace it two slots to the left. The desired set temperature is now locked.



1. Pressure gauge
2. Heating service and heating temperature selector
3. Main control, reset and D.H.W temperature selector
4. Clock
5. Green light power on and flashing burner on
6. Red light - lock out

The fire can be operated using the remote control hand set (see operating instructions).

WARNING: Before undertaking any maintenance or cleaning, disconnect from the power supply. Only competent persons should service/repair appliances.

NOTE:- To prevent scratching of the front screen, this appliance should be cleaned with soapy water and a damp cloth only. Due to the nature of stainless steel it picks up finger marks easily, the trim should always be cleaned with a cleaner that is suitable for stainless steel.

FOR USER INSTRUCTIONS, LAMP REPLACEMENT AND FAULT FINDING PLEASE CONSULT THE USER INSTRUCTIONS.

GAS FIRE (IF FITTED)

Before igniting your fire read the user instructions.

DISHWASHER (IF FITTED)

Please read user instructions before using the dishwasher.

MORCO MODELS D-61B

BEFORE USING THIS APPLIANCE PLEASE READ THE FULL INSTRUCTIONS SUPPLIED THOROUGHLY, ALWAYS RETAIN THE INSTRUCTIONS FOR FUTURE USE.

INSTRUCTIONS FOR USERS

WARNING: No attempt must be made to adjust this appliance for use with other gases.

LIGHTING THE PILOT



Fully depress the control knob and turn it to the left from the • position to the ★ position (pilot setting).

The pilot should light during this operation due to the action of the piezoelectric spark igniter or electronic ignition.

Heating and Cooking

Hold this knob in this position for about 10 seconds after the pilot has lit.

If the pilot fails to light after having activated the piezoelectric spark igniter mechanism or electronic ignition, this means that there is air in the gas pipes. In this case, allow plenty of time for the pipes to be cleared of air, with the gas control knob at the pilot setting. * Where there are long gas pipe runs, it may take up to 3 minutes.

PREPARING THE HEATER FOR USE

Once the pipes are free of air and the pilot is alight, wait about 10 seconds for the safety valve mechanism to be activated, the appliance is ready for use. Turn the control knob anti - clockwise to one of the main burner settings.



GAS CONSUMPTION SELECTION

You can choose between two different types of operation, depending on the hot water outlet temperature required.

Economy Setting

Turn the control knob to the 🔥 position.

Use this setting only when the ambient cold water supply to the heater temperature is high (Normally summer continental use)

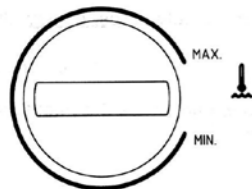
Heating and Cooking

Full power setting (for normal use)

Use this setting when the ambient cold water supply to the heater is low (Normally UK or cold climate countries)



WATER TEMPERATURE SELECTION



To adjust the hot water temperature, turn the selector control to the right for hotter water and to the left for cooler water.

- Whatever the water temperature selected, it remains constant even if there are fluctuations in the mains water pressure, (within the minimum and maximum range), due to the action of the automatic water flow regulator.
- Never reduce the flow of hot water by using the appliance's water inlet stopcock. This stopcock should always be fully open.

TURNING OFF THE WATER HEATER

From whichever position the gas control knob is in, turn it to the right to the • position. This will cut off the supply of gas to the pilot and the burner.

PRECAUTIONS TO BE TAKEN AGAINST FROST AND FREEZING CONDITIONS

If the appliance is installed in caravan holiday home, leaving the appliance un-drained during freezing conditions, will result in the appliance being frost damaged. It must be drained down in one of the following ways:

Instructions for F11-E and D61-B appliances

- Turn off the gas and electrical supply.
- Turn off the mains water inlet stopcock.
- Turn temperature control knob fully anticlockwise to minimum setting.
- Turn on all hot and cold water taps.
- Open all hot and cold drain cocks on the installation. Please refer to your caravan owners handbook for the location of all drain cocks.
- Leave all taps and plugs open until the boiler is next needed for service. This will allow any residual water to continue to drain.
- Disconnect the mains water inlet

stopcock from the caravan pipework, this will stop water refilling the pipework, if the stopcock fails due to frost damage.

- Protect drain cocks and any open ended pipe from insects or debris.

To turn the water on again, close all drain cocks, reconnect and open the mains water inlet stopcock and turn off each hot and cold water taps as the water runs clear.

Instructions for FEB-24D appliance

Providing the boiler power supply and gas supply is connected the boiler will automatically fire on minimum when near freezing conditions are detected. When the temperature in the system reaches 20°C it will switch off.

NOTE: It is still necessary to drain the domestic hot and cold water system.

If the holiday home is to be un-occupied during cold periods, and whenever there is a threat of freezing, the domestic hot and cold water circuit must be drained as follows:

- Turn off the cold water supply.
- Turn on all hot and cold water taps.
- Open all drain plugs in the hot and cold water system (Do not drain the central heating circuit which should have been filled with antifreeze) Please refer to your

caravan owners handbook for the location of all drain cocks.

Note: There are no drain plugs fitted to the actual boiler.

- Leave all taps and plugs open until the boiler is next needed for service. This will allow any residual water to continue to drain.
- Disconnect the mains water inlet stopcock from the caravan pipework, this will stop water refilling the pipework, if the stopcock fails due to frost damage.
- Protect drain cocks and any open ended pipe from insects or debris.

NOTE: The boiler inbuilt frost protection feature is designed primarily to prevent damage to the heating circuit and radiators. It will not protect the hot and cold water pipes from freezing under the holiday home and will provide only a limited protection to the boiler pipework and hot and cold pipework inside the holiday home.

The heating circuit and radiators should contain the correct level of antifreeze to prevent damage during freezing conditions and should not be drained down.

For the frost feature to work, the gas supply must be left on and the electrical power supply (wall socket), must be connected and switched on, the central heating control knob on the boiler must be in the off position.

Do not rely on the boiler frost protection to prevent freezing of the hot and cold water pipes, including those inside the boiler during severe frost conditions, it will not.

We strongly recommend a qualified & competent service engineer is employed to do the drain down service.

MAINTENANCE RECOMMENDATIONS

The appliance must be checked for safe operation annually, regardless of frequency of use. This refers principally to the correct combustion of the main burner and pilot. Maintenance should only be carried out by a qualified and competent service engineer. Please refer to section 2.3 of this manual.

CHECKING FOR SAFE OPERATION

In addition to any annual service by a competent person, the user should carry out the following checks periodically and especially after any period of disuse.

PILOT BURNER

Look through the pilot window and check the pilot flame is blue. There should be no yellow colour or laziness.

MAIN BURNER

Look through the pilot window when the hot tap is open and the boiler is running. The

Heating and Cooking

burner flames should be all blue with no yellow/white colour or laziness.

If you see any yellowness or laziness in the flames do not use the appliance and call a service engineer. The burners will almost certainly be blocked by dust/fluff or insect matter and any further use will cause sooting up leading to a dangerous situation and expensive repair.

OTHER INDICATIONS

- Never tamper or adjust with any pre-sealed unit.
- There is a danger of burning yourself if you touch the area in or around the pilot window. We recommend that you avoid touching this area.
- Do not cover or use the heater for drying purposes or use the heater compartment for storage of any goods especially flammable liquids.
- The appliance has a device to detect that combustion gases are removed correctly via the flue. If there are any problems detected in the removal of these gases (spillage), the device cuts off the supply of gas to the burner

N.B. Adverse weather conditions may cause this device to activate please

See section A.2.2 COMBUSTION GAS REMOVAL

Heating and Cooking

To restart the appliance you must wait at least 10 minutes before lighting the pilot light, as described earlier.

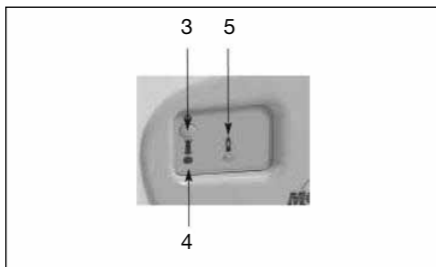
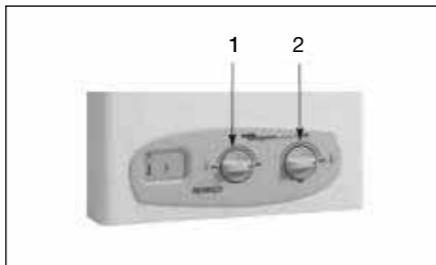
If these interruptions occur repeatedly have the heater inspected by a competent registered gas engineer.

NEVER BLOCK ANY VENTILATION THAT HAS BEEN PURPOSELY PROVIDED FOR THE CORRECT AND SAFE OPERATION OF THE APPLIANCE.

MINIMUM ANNUAL MAINTENANCE

Gas water heaters are rugged pieces of equipment which are designed to work for a long time with minimum maintenance requirements. The only regular maintenance required is the (annual) cleaning of the heating body and the burner. **It is essential this is done at the beginning of each season.**

ROOM SEALED WATER HEATER (if fitted)



- 1 - Variable power selector
- 2 - Water temperature selector
- 3 - ON-OFF button
- 4 - Red 'LOCKOUT' indicator LED
- 5 - Orange burner ON indicator LED

Operation

Obtaining hot water

To start up the heater depress the ON-OFF button (3). The heater will then be ready to function automatically when any of the hot water taps are turned on. The orange LED (5) will come on while the heater is working.



Selecting the required power

Turn the power selector (1) to obtain the desired power. MAX position indicates 100% power. MIN position indicates 50% power.



Selecting the hot water temperature

Turn the water temperature dial (2) to obtain the desired temperature. MAX position indicates the maximum temperature (min flow). MIN position indicates the minimum temperature (maximum flow).

IMPORTANT: This heater is not thermostatic.

Note: It is advisable to adjust both the power and the water temperature to minimum value necessary to cover your requirements. This will save energy and prolong the life of the appliance, reducing scale deposits on the heat exchanger.

Switching off the water heater

Heating and Cooking

When the hot water tap is turned off, the heater will stop automatically. To switch off the heater completely, press the ON-OFF button (3).

IMPORTANT: When the heater is switched on for the first time, or if it has not been used for a certain time, or when a new gas bottle is installed, the appliance may fail to ignite due to the presence of air in the gas pipes. If this happens, the heater will 'LOCK OUT' and the red LED (4) will be displayed.

- Occasionally, the heater may fail to ignite due to excessively windy conditions or other adverse atmospheric conditions, causing 'LOCKOUT'.
- Insufficient gas pressure (faulty regulator) or fluctuations in voltage may also cause 'LOCKOUT'.
- To RESET the heater press the ON-OFF button to switch off then depress the ON-OFF button to restart. The red LED should now be off and the heater should ignite when the hot tap is opened.
- If the heater locks out persistently, call your installer or the MORCO on 01482 325456 for details of your nearest service agent.
- ALWAYS REFER TO THE MORCO USER MANUAL

SETTING TEMPERATURE LIMITS

Withdrawing the retention pin

The black retention pin for limiting or locking desired temperatures can be found underneath the setting arrow.



Retention pin installed

The retention pin is shown as it would look after installation, in the slot under setting IIIII limiting the temperature to position II.



Frost protection setting

Provided the central heating boiler and pump remain operative, the frost protection setting allows heat to circulate within the system e.g. where properties are vacant over the winter months, to prevent freezing and consequent damage to the system.

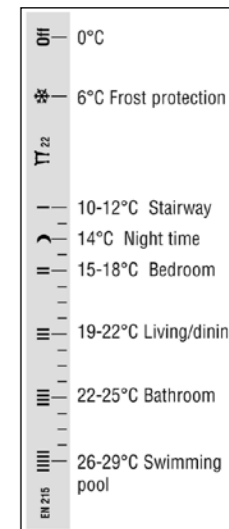
Working pressures and temperatures

The following maximum temperatures and pressures must not be exceeded.

Size	Maximum temperature	Maximum pressure	Maximum differential pressure
8 - 15mm	120°C	10 bar	1 bar

Mistral TRV temperature settings

This diagram shows the relationship between the settings on the valve head and the approximate room temperature achieved.



Appliances

GAS OVEN AND GRILL

Please read the user instructions provided before using the oven and grill.

GAS HOB

Please read the user instructions provided before using the hob.

COOKER HOOD

Please read the user instructions provided before operating or changing the filter.

FRIDGE/FREEZER

Please read the user instructions provided before using the fridge/freezer.

MICROWAVE OVEN (IF FITTED)

Please read the user instructions provided before using the microwave.

ELECTRICAL LOUNGE FIRE/HEATER (IF FITTED) PLEASE READ USER INSTRUCTIONS PROVIDED

The fire can be operated using the remote control hand set (see operating instructions).

WARNING: Before undertaking any maintenance or cleaning, disconnect from the power supply. Only competent persons should service/repair appliances.

NOTE:- To prevent scratching of the front screen, this appliance should be cleaned with soapy water and a damp cloth only. Due to the nature of stainless steel it picks up finger marks easily, the trim should always be cleaned with a cleaner that is suitable for stainless steel.

FOR USER INSTRUCTIONS, LAMP REPLACEMENT AND FAULT FINDING PLEASE CONSULT THE USER INSTRUCTIONS.

GAS FIRE (IF FITTED)

Before igniting your fire read the user instructions.

DISHWASHER (IF FITTED)

Please read user instructions before using the dishwasher.

GENERAL CARE AND MAINTENANCE

Chassis	38
Winter Storage	38
External Structure	40
Windows and Doors	41
Hinge mounting instructions	43
Adjustment of Lockmaster 3 deadlock system	45
Alignment and adjustment of doors	46
Vinyl Flooring	47
Internal	47
Electrics	48
LPG	48
Kitchen and Bathroom	50
Furnishings	53
Furniture	53
Security	53

General Care

CHASSIS

GALVANISED CHASSIS

The chassis is Hot Dipped Galvanised. Hot dip galvanising has been used for many years throughout the automotive industry and is widely regarded as one of the best forms of corrosion protection.

When the steel is withdrawn from the galvanising bath it has a clean, bright surface. Over a period of time this changes to a dull grey colour as the surface zinc reacts with oxygen, water and carbon dioxide in the atmosphere to form a tough, stable, protective layer.

During this time, if galvanised items are stored in damp or wet conditions, where there is little or no air movement, then the zinc will continue to react with the moisture that is present. In so doing the zinc will produce excessive amounts of zinc hydroxide. This is seen as a bulky white deposit on the surface of the galvanising and is often referred to as wet storage stain (white rust).

In the case of Leisure Accommodation Vehicles, you can help to prevent wet storage stain (white rust) occurring. You can do this by washing the chassis with clean water as soon as they are delivered. You must then allow an adequate flow of dry air to ensure that they dry off completely.

In order to prevent the occurrence of wet storage stain in the first instance, and to allow the final protective layer to form correctly it is important to ensure that all galvanised parts are stored in good, dry conditions, with sufficient ventilation to allow good air circulation.

Should wet storage stain (white rust) occur on a product however, then it can sometimes be removed using a stiff bristle brush or a "Scotchbrite" pad.

Because of its post process nature "Wet Storage Stain (white rust)" is not covered under Warranty procedures. If, however, it can be shown that the galvanising process was defective in some way i.e. areas not galvanised, then an inspection can be arranged and action agreed upon.

PAINTED CHASSIS

It is imperative that as a minimum, annual inspections take place to all painted steel areas to assess any degradation of the paint system.

The finish on a caravan chassis is under constant attack from sunlight, coastal air, pollution, dust and frost. To this end it is recommended that the chassis is regularly inspected and washed as appropriate.

Maintenance may be required at more frequent intervals because of fading, chalking, chemical contamination, wear and tear, or for aesthetic or other reasons.

Mechanical damage to the paint system will result in a significant reduction in the paint durability. Hence, mechanical damage must be identified at an early stage and appropriate touch-up procedures followed to the effected areas.

Minor paint damage, such as chipping, can be touched up with approved paint, available through your dealership.

WINTER STORAGE

The following items are the procedures for preparing your holiday home for winter storage. Virtually all apply whenever the unit is to be unoccupied for any long period when frosts can be expected. Refer to the specific instructions for the type of water heater fitted in your Holiday Home in the Heating and Cooking section of this Handbook.

- Turn off LP gas supply at the cylinder and remove regulator and hose for storage inside. Ensure that the open gas inlet is protected against entry of dirt or insects.
- Turn off mains water stop tap.
- Open drain off outlets on the underside of the holiday home.
- Open all hot and cold taps.
- Remove drain off screw from water heater (have a bucket handy) and replace screw to avoid losing it.

(f) Thermostatic Mixer Valves require full protection from frost, they should be removed or drained correctly. Refer to the Thermostatic Mixer Valve instructions in the Kitchen and Bathroom section of this Handbook

(g) Flush all toilets.

(h) When all water is drained, close the drain off outlets and all the hot and cold taps.

(i) If a fridge freezer with icemaker and water filter facilities is fitted, draining down and removal of the filter is recommended to prevent frost damage to the filter during cold and freezing conditions.

The filter water pipes are connected to the filter with push fit water pipe fittings.

With a flat bladed screwdriver or similar blunt instrument, carefully depress the water pipe fitting collar as shown in Fig.1. Take care not to score the filter pipe as this may prevent a water tight seal when the filter is reconnected. Holding the collar tight to the fitting, carefully remove the filter.



Fig. 1



Fig. 2

(j) If a dish washer is fitted it should be protected from frost damage by carrying out the following instructions:-

- Remove electrical power to the dishwasher.
- Turn off the water supply and disconnect the water inlet pipe from the water valve.
- Drain water from the inlet pipe and water valve. (Use a pan to catch the water).
- Reconnect the water inlet pipe to the water valve.
- Remove the filter in the tub at the bottom and use a sponge to soak up water in the sump.

(k) Pour anti-freeze or common salt into the WC pan and also the sink, basin and shower waste traps. Avoid these substances coming into contact with metallic surfaces such as stainless steel sinks or waste outlet and remove any spillage. We recommend the use of a small funnel.

(l) Switch off and unplug all electrical appliances (including TV Aerial plug). Turn mains control switch to off position.

(m) Remove all food. Thoroughly vacuum all carpets and vinyl to remove any traces of food.

(n) Empty the vacuum clean bag.

General Care

(o) The kitchen sink should be free of all particles and left clean.

(p) Carry out a full lubrication schedule (i.e. locks, hinges, jockey wheel).

(q) Clear gutters and fall pipes to prevent debris blocking the system.

(r) Wash and polish exterior paintwork.

(s) Close and secure roof light (where fitted) and all windows making sure no curtains are trapped but are hanging free.

(t) Preferably, soft furnishings should be removed and stored in ideal conditions, or, if they are to remain within the unit, it is advisable to place cushions and mattresses separately on end or edge to allow a free movement of air around them.

(u) Secure exterior windows. Many people leave bowls of water-absorbing crystals or common salt as a means of withdrawing moisture from the air. No moisture means no mildew and damp, so the practice is worthwhile.

CENTRAL HEATING: DO NOT DRAIN OFF THE RADIATOR SYSTEM, IT IS A SEALED SYSTEM PROTECTED BY AN ANTI-FREEZE SOLUTION.

General Care

CHECKING THE EXTERNAL STRUCTURE

Inspect visually for damage to panels, gutter and other external features. Signs of damage, leakage and movement should be repaired as necessary.

NECESSARY SAFETY PRECAUTIONS MUST BE TAKEN BEFORE CLIMBING ONTO THE ROOF. DO NOT CLIMB ON THE ROOF UNLESS YOU USE AT LEAST A 15MM THICK SHEET OF PLYWOOD OR SIMILAR. IT MUST BE WIDE ENOUGH TO SPAN OVER TWO ROOF SPARS WHICH ARE APPROXIMATELY 400MM CENTRES, A SHEET 1220MM X 1220MM (4' X 4') SHOULD BE SUITABLE WHEN POSITIONED CAREFULLY ON THE ROOF.

Visually inspect for damage of the roof structure, check all visible mastic seals for signs of shrinkage or cracking and re-seal where necessary.

The water system should be inspected for leaks and rectified as necessary.

BLOCKAGES

If you have a waste water or toilet blockage, the first thing to check is that the site main drainage is clear as any blockages here could back-up to your holiday home. If it is clear and you have a toilet blockage we would recommend that you call a plumber,

unless you are aware of what could have caused the problem and are competent to address the problem. If it is a waste blockage, you should first check and clean out bottle traps situated under the sink, basin and shower tray (if fitted). If you still have a blockage, then it must be in the feeder pipes to the main sewerage pipes on the main sewerage pipe. You should consult a PLUMBER OR YOUR PARK OFFICER AT THE STAGE unless you are competent to do the job.

GUTTERS AND DOWNPIPES

It is important that all gutters and down pipes are kept free from obstructions and blockages. Inspect regularly.

EXTERIOR PANELS

ALUMINIUM PANELS

The aluminium exterior of your holiday home is pre-painted, oven dried aluminium sheet and is very easy to keep clean. The cleaning method recommended is to wash down with plenty of clean water and very mild detergent.

An occasional polish with a good quality wax will help obtain a high gloss finish. Under no circumstances should an abrasive or harsh cleaner be used. Stubborn marks, such as bird soiling, grease etc. can be removed by rubbing with a soft cloth dampened with White Spirit.

CANEXEL PANELS

CanExcel prefinished siding is produced from wood fibre, resin, and wax fused under pressure. This engineered wood paneling is highly stable, as well as highly resistant to moisture. The finish on CanExcel siding consists of five coats of baked-on paint and a sealer top coat.

Cleaning is as for aluminium panels. Small scratches and other minor damage can be repaired with the use of CanExcel retouching paint. Details can be found at www.canexel.co.uk.

PVC PANELS

These panels are low maintenance, which will never need painting or preserving and with the required care and attention will stay looking good for years.

To maintain the appearance, it will be necessary to wash the panels with warm soap and water to remove surface dirt. The frequency of cleaning will depend upon the local environmental conditions. Copious amounts of soapy water should be used to avoid any chance of scratching the surface.

When wiping always use a soft cloth or sponge:
NEVER use solvent based cleaners
NEVER use abrasive cleaners.

WARNING: Do not wash your Holiday Home with a high pressure washer as these can permanently damage the exterior panels and seals of your Holiday Home

SNOW PRECAUTIONS

Great caution should be taken when cleaning snow from the roof of the holiday home. Particularly in models with vaulted ceilings.

General Care

DOOR AND WINDOW HANDLES

Apply silicone spray and wipe off excess with a soft cloth.

Lock cylinder. Lubricate with PFTE (union part no. 9075) or similar. Apply the key flutes, insert the key and operate several times to ensure even distribution. Latch, dead bolt and roller locks. Apply petroleum jelly/Vaseline. This acts both as lubricant and water repellent.

Doors and window hinges: - No lubrication is required, smear with Vaseline to protect against water.

Window friction stays: - Protect with a mild detergent oil or a very light lubricant, use sparingly as oil does attract dirt.

RECOMMENDED MAINTENANCE

Lubricate every 6 months.

MINIMUM RECOMMENDED CLEANING INTERVALS

Monthly. Frames, door and window furniture. Wash with warm water and a mild detergent. It is important to ensure that all dirt and debris is regularly removed from the internal rebate of door and windows. Cleaning cloths should be in-bleached cellulose/cotton material. Do not use cloths containing synthetic fibres.

DOORS AND WINDOWS OPERATION OF DOOR LOCKS

OPERATION OF DOOR LOCKS

To unlock the door from the outside, insert key and turn anticlockwise, pull on the handle. To lock, push the door to the closed position so that the first stage lock engages. Lift the handle upwards to engage the extra security roller locks, insert the key and turn clockwise to engage the deadlock.

OPERATION OF NIGHT VENTS (IF FITTED)

The window frame will have been fitted with a secondary keep within the rebate. You can close the handle to locate the spur inside this keep, which will lock the window but allow a level of ventilation.



Fully closed



Night vent position

General Care

Six monthly. Clean with a proprietary brand of UPVC cleaner.

Important: Make sure that you follow ALL the recommendations and cautions supplied with the product.

REPAIRS

On white profiles only, stains and scratches can be removed by sanding and polishing. Use a 320/400 grit sanding disc and polish using sisal rotary brush to bring back the surface finish.

It is important that you achieve a smooth even finish before beginning the polishing stage.

On wood grain surfaces, care should be taken when cleaning. Any white areas showing as a result of damage or cleaning can be retouched using a wood grain marker pen. If you have a breakage or a crack please contact your nearest glazier. Handle any broken glass with care and dispose of with safety of others in mind.

DO'S AND DON'TS FOR UPVC PRODUCTS

Do

- Clean the glass regularly with a good quality liquid spray glass cleaner.
- Frequently wash down the UPVC with plenty of warm soapy water (use liquid general purpose cleaner) and wipe dry.
- Only use cleaning materials which do not impair anti-corrosion properties
- Use cream cleaner for isolated stubborn stains on white UPVC only. Apply with a damp cloth using minimal pressure.
- Ensure drainage slots are kept unblocked and free from dirt, spider's webs, etc.
- Keep all tracks clear of dust and debris in order to reduce the wear on sliding parts.
- Check all fire escapes' hardware annually for wear and tear and a continuous firm fit.
- Ensure that all gutters and their outlets are kept clear of leaves and debris to maintain efficient operation.
- Replace damaged or worn parts with original parts by an authorised specialist.

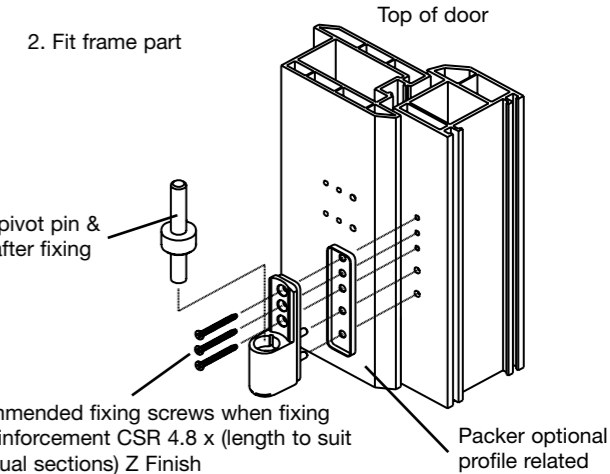
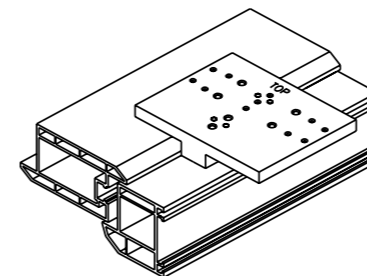
Don't

- Use cleaners on any UPVC.
- Use abrasive paste or cream
- Use excessive pressure when cleaning UPVC.
- Use high pressure or steam cleaners.
- Use any type of bleach, solvent (e.g., white spirit, methylated spirits, nail varnish remover) or adhesives.
- Use any unspecified tools.
- Use any abrasive papers, such as sandpaper.
- Use abrasives or brass cleaner on furniture: handles, door knockers, letter plates.
- Use excessive loads on the windows and doors.
- Fail to maintain the product as indicated.
- Paint or try to remove paint.
- Lean ladders against guttering.

General Care

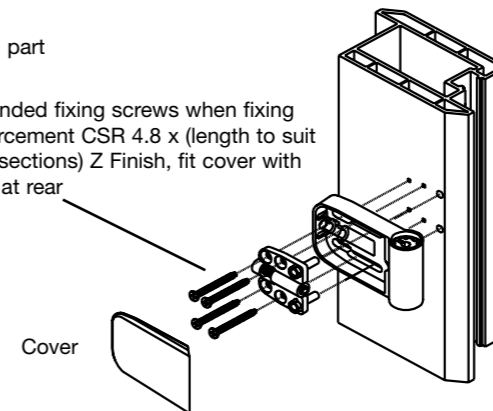
LIFT OFF HINGE MOUNTING INSTRUCTIONS

1. Position hinge jig on sash/frame and drill (basic jig shown) always try to fix to reinforcement on sash and frame.



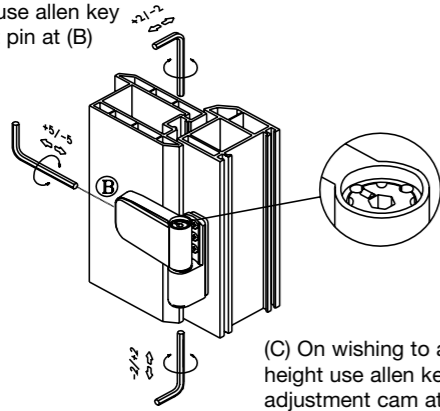
3. Fit sash part

Recommended fixing screws when fixing into reinforcement CSR 4.8 x (length to suit individual sections) Z Finish, fit cover with M4 screw at rear



General Care

On wishing to adjust the frame cover, use allen key in adjustment pin at (B)

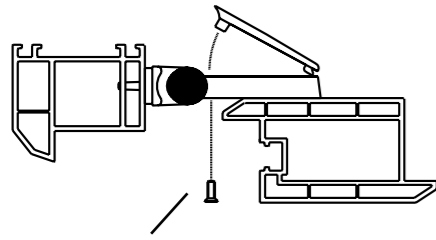


4. Fit frame part

Align eccentric bush datum mark so all the hinges are set the same at (A) push in location cap on wishing to adjust bush remove location cap insert allen key in hexagon hole and turn to required setting, replace location cap to retain setting

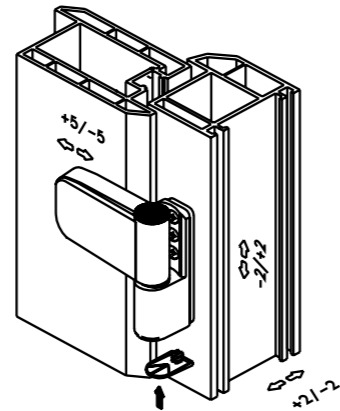
(C) On wishing to adjust height use allen key in adjustment cam at (C)

5. To fit or remove cover, remove M4 fixing at the rear of sash part



M4 - Cover screw

Hinge fitted showing full adjustment



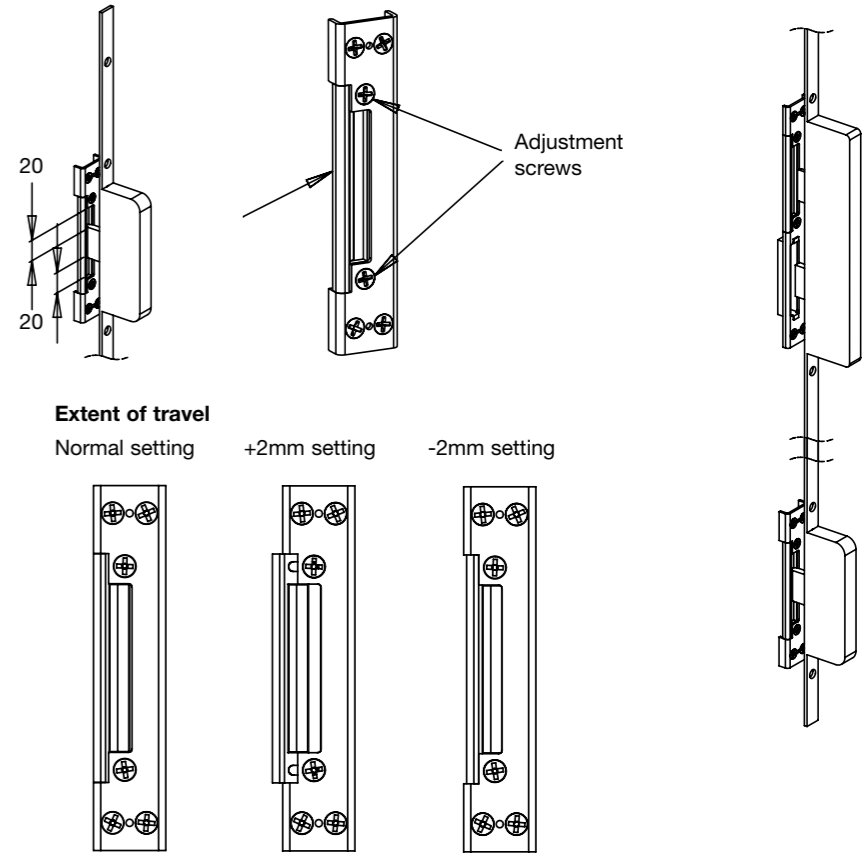
When final adjustment has been made, push in end cap

General Care

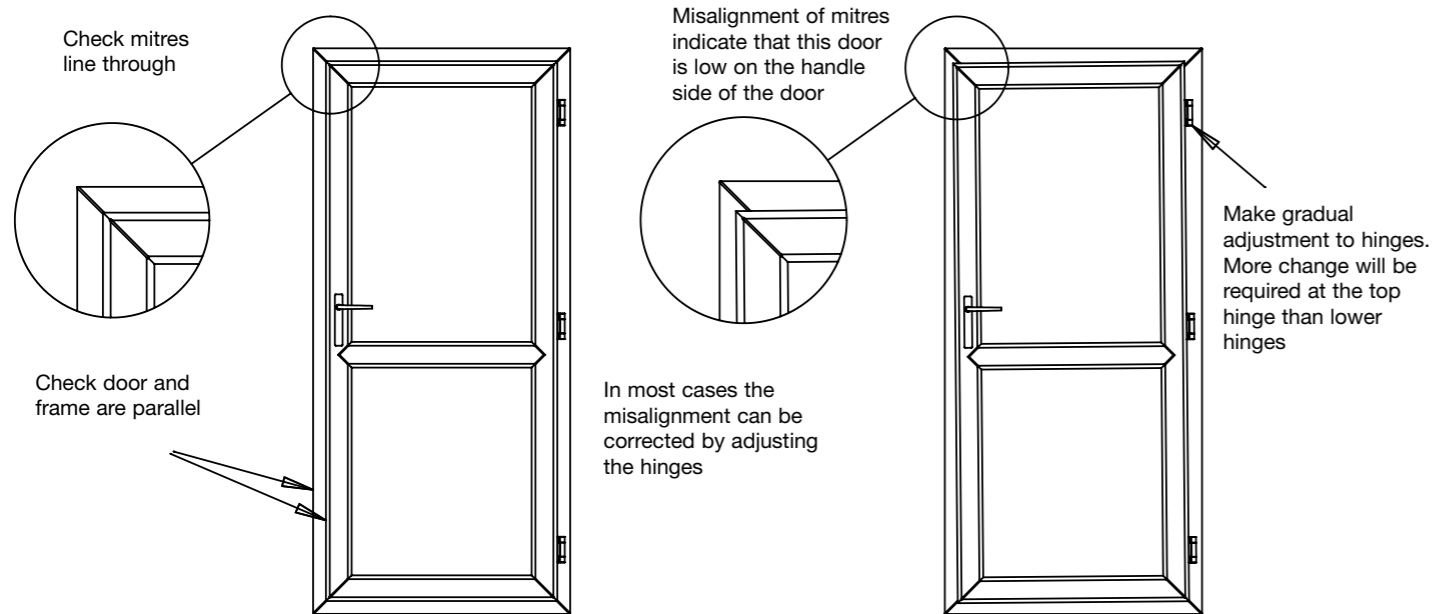
ADJUSTMENT OF LOCKMASTER 3 DEADLOCK SYSTEM

The Lockmaster 3 Deadlock System as illustrated to the left is a new locking mechanism developed specifically for the leisure home market. Each of the deadlocks and the latch have +20mm and -20mm vertical movement to aid locking during manufacture, transport and siting. In addition, both the top and bottom keeps and the centre latch have +2mm and -2mm of lateral adjustment to aid site fitting

To adjust the latch and keep plates use a No 2 Phillips screwdriver to release the adjustment screws and move the plate to as required. Please note that the plate and body of the keep assembly have serrations to help them lock together upon tightening of the screws



ALIGNMENT AND ADJUSTMENT OF DOORS



VINYL FLOORING

Whatever the size of your family, taking care of your floor couldn't be easier.

- Regular care: Simply remove dust with a brush or vacuum cleaner
- Weekly care; Mop with water and a mild household detergent for optimal cleanliness

You may wish to clean more or less often accordingly to how heavily used the area is.

Please note your floor may be disinfected with diluted bleach daily as required.

INTERNAL

INTERNAL WALLS

All internal walls with an external side should be visually checked for damp and repaired as necessary.

SURFACE PROTECTION

Never use a knife or sharp instrument directly on worktops or unit surfaces.

BUNKS

NOTE: - IF UPPER BUNKS ARE FITTED, CARE SHALL BE TAKEN AGAINST THE RISK OF FALLING OUT. UPPER BUNKS ARE NOT SUITABLE FOR CHILDREN UNDER 6 YEARS OF AGE WITHOUT SUPERVISION.

A SOLUTION for every stain	
Your Ornamenta floor is naturally very resistant to stains. However, to help you deal with those little daily disasters, here are a few highly effective tips for tackling stains	
STAINS	SOLUTION
Ball point pen, felt tip pen, paint, rubber marks, food grease	Use a cloth soaked in surgical spirits or strong household detergent. Rinse thoroughly.
Blood, mustard, tomato, polish etc.	Apply diluted bleach or hydrogen peroxide, possibly adding a few drops of white wine vinegar. Leave for a few minutes. Rinse thoroughly.

APPLIANCE VENTILATION

Like you, appliances need air or rather the oxygen in the air. There must be adequate supply of fresh air for appliances to work properly, and the products of combustion must be removed.

There are three types of appliances for use in caravans: those with a room sealed flue, such as some kinds of fires and central heating boilers; those that need an ordinary flue, such as boilers, water heaters and some types of radiant fires; and those that do not have a flue, such as a cooker or hotplates or refrigerators.

With room sealed flue system, air for combustion and the products of combustion are kept sealed from the room atmosphere. By law, room sealed flued appliances should be used in bathrooms/shower rooms. It is

also advisable to use this type of appliance in bedrooms.

Never use an open flued water heater installed in the bathroom while in the bath. Always turn off the heater before getting into the bath and ensure there is a good ventilation at all times while the heater is in use.

When using flued and flueless appliances, it is essential to ensure that ventilation is adequate.

If the room has ventilators or grills, make sure they are NEVER BLOCKED. Most rooms have fresh air entering around doors and windows – but if a room becomes stuffy, open a door or a window immediately.

IF IN DOUBT – SEEK ADVICE.

General Care

Servicing if needed to ensure:

- Flues and heat exchangers are not blocked.
- Air inlets are clear
- The gas consumption is correct.
- Safety devices are working correctly.
- The appliance is safe for further use.

ELECTRICS

The electrical supply to your holiday home on some holiday parks is restricted. Please check with you park manager before using additional appliances within your holiday home. In case of doubt consult the park owner or his agent.

The Residual Current Circuit Breaker (RCCB) or Residual Current Device (RCD) serves as the main switch for your holiday home. It is also the main emergency shut off switch for your holiday home. It is a safety device designed to protect you from the possibility of shocks that could arise from a faulty power pack supply, faulty appliance or a fault on the holiday home causing the current to run to earth.

The RCD has been factory tested for correct operation. The RCD should be tested each time you switch on the mains supply and/ or every month.

- With the supply connected, switch RCD to ON.

- Press test button marked 'T'.

Unit should now 'trip off'. If so, reset the system by switching on again. If the unit does not 'trip off' do not use the mains supply until the fault is corrected – consult your park owner or qualified electrician. If the unit 'trips off', other than during test, again do not attempt to use the mains supply – there is a fault which needs expert attention. In case of difficulty consult an approved electrical installation contractor. It is dangerous to attempt modifications and additions yourself. Preferably not less than once a year, the electrical installation should be inspected and tested and a report on its condition obtained as prescribed in the Regulations for Electrical Installations, published by the Institute of Electrical Engineers.

LPG

ROUTINE CHECKING

- (a) Flexible hoses and tubing should be regularly inspected and replaced when signs of cracking or other deterioration appears. After replacement, ensure that the ends are well secured and leak tight.
- (b) Check the complete gas installation on the holiday home for soundness at least

once per annum and as necessary according to usage.

- (c) All flue installations should be inspected, at least once a year, throughout their length for integrity of attachment, both to appliance and cowl, and for perforation due to damage or corrosion. Flues should be replaced if any sign of damage or perforation is found. It should be ensured that the replacement is of an approved type conforming to the recommendations of BS 5440 Part 1. Flexible flue pipes should be manufactured of material not less than 0.10 mm thick and should be one of the following grades of stainless steel as specified in BS 1449:
Part 2.

316S11	316S13	316S31
316S33	317S12	317S16
320S31	320S33	

- (d) Permanent ventilators in the living apartments and in the cylinder storage area should be checked to ensure that they are not obstructed

CHANGING GAS CYLINDERS

The following procedure should be adopted.

1. Extinguish any fire, flame or source of ignition (including cigarettes, pipes and pilot lights) before changing gas cylinders.
2. Wherever possible change gas cylinders in the open air.
3. Ensure that the gas cylinder valve(s) is/are closed before disconnecting any empty cylinder or before removing the plastic cap or plug on the outlet connection of the replacement cylinder (note: Left hand thread).
4. Ensure that the replacement gas cylinder is the correct one for the installation.

Make firm gas tight joints. Any leaking vapour will smell. If a leak is suspected after changing gas cylinders and opening valve, test by brushing with soapy water around the joints. Bubbles will form if vapour is leaking.

NEVER USE A NAKED FLAME Gas cylinder valves are of various designs depending on the type of cylinder and the use for which it is intended and it is essential that the correct pressure regulator with the correct pressure setting and capacity for the installation is used in accordance with the manufacturers instructions.

General Care

leak, close cylinder valve(s) and call a competent installer to rectify the fault.

If a leaking gas cylinder cannot be stopped, remove the cylinder to a safe place in the open air in an upright position away from drains and any source of ignition.

GAS APPLIANCES

There are many central heating boilers, water heaters, fires and cookers as well as leisure appliances that can be used with your Calor gas supply. Many look just like those for use with natural gas. They operate just as efficiently, give the same superb performance, but care must be taken when buying and using them.

When buying a gas appliance it is important to ensure it is suitable for use with Calor propane. You should purchase appliances that bear the CE mark and have been designed for use in caravans.

Many accidents caused by faulty gas appliances involve those, which may have been purchased second-hand. Special care is needed if you buy a second-hand gas appliance. Have it fully checked by a competent installer for safety. **If you have any doubts "don't buy"**.

In the case of a connection on a pressure regulator or gas appliance which relies upon a sealing washer(s) to maintain a gas tight joint, it is essential to check that the washer is present, sound and correctly positioned prior to making the connection. Where the connection relies on a metal seating or bull nose connection to obtain a gas tight joint it is essential that the mating surfaces are clean and undamaged. In no case should a damaged valve or connection be used.

Where connections are designed to be tightened with a spanner it is essential that a spanner of the correct size is used and that the union is firmly tightened (hand tightness is not sufficient). When self-sealing valves are incorporated in a gas cylinder, connections should be made in accordance with the manufacturer's instructions and tools should not be used.

GAS LEAKS

- (a) If a gas leak is suspected, close the gas cylinder valve or other valve at the inlet to the premises. Do not operate electrical switches. Open all doors and windows to disperse any gas escape.
- (b) The strong unpleasant smell of LPG will enable the general area of the leak to be detected. Check that gas is not escaping from an unlit appliance. In the case of a

General Care

Installation of appliances

It is required by law to use installers which display the Gas Safe symbol as they are registered with the Council of Registered Gas Installers and

undertake to work to the highest standards of safety. Amateurs and DIY 'experts' can put you and your family at risk and face prosecution. Don't take that risk, use the professionals.

A list of recommended installers who can install LPG appliances can be obtained from Gas Safe, Tel No: 0800 408 5500.

For your own health and safety you must read the instructions and labels first, and then keep them handy for reference. If there is anything you're not certain about concerning your installation please contact your installer. For advice about any other LPG appliance, please contact your Calor Dealer or appliance manufacturer.

Servicing appliances

Gas appliances should be serviced regularly to keep them in a safe and efficient condition. Properly maintained appliances are safe in use and are no cause for concern.

Central Heating Boilers/Hot Water Circulators: Boilers and water heaters



should be serviced at least once a year. Your Gas Safe registered Central Heating Installer will normally undertake this work. Alternatively, contact Gas Safe, for details of Gas Safe registered installers in your area.

Other Appliances: Cookers and fires etc. should be serviced at least once a year.

NEVER BLOCK VENTILATION GRILLS OR GAS DROP HOLES.

ALL APPLIANCES ARE FITTED IN ACCORDANCE WITH SPECIFICATION LAID DOWN BY EACH MANUFACTURER AND THEY HAVE UNDERTAKEN THEIR OWN INSPECTION OF INSTALLATION AND GIVEN THEIR APPROVALS.

MOST OF THE BRANDED APPLIANCES CARRY THEIR OWN WARRANTY AND AFTER SALES SUPPORT. IN THE EVENT OF EITHER BEING REQUIRED, PLEASE FOLLOW THE DIRECTIONS OF THE WARRANTY OR CONSULT YOUR OWN SUPPLYING DEALER.

SURFACES OF APPLIANCES BECOME HOT IN USE. ANY GUARDS PROVIDED MAY NOT GIVE FULL PROTECTION TO THE YOUNG OR ELDERLY.

KITCHEN AND BATHROOM

TOILET/SHOWER ROOM

THERMOSTATIC MIXER VALVE(SHOWER)



All Thermostatic Mixing Valves (TMV's) must be carefully protected against frost damage. TMV's should be removed or correctly drained down during months in which frost may occur.

The Thermostatic Mixer Valve controls accurately the temperature of water for showering. The valves also maintain the pre-set temperatures even if the water pressure varies when other appliances are used. This significantly reduce the risk of scalding when showering.

Function

Hot and cold water entering the valve is mixed to a temperature pre-selected by the user or installer. This is achieved automatically by a thermally sensitive mechanism within the valve that proportions the amount of hot and cold water entering to produce the required blend. The mechanism then automatically compensates for any variations in supply pressures or temperatures to maintain the pre-selected temperature. In the event of cold water supply failure, the thermostatic mixing mechanism will automatically shut down the flow to prevent discharge of dangerously hot water

Operating pressure:

Dynamic pressure: - 0,5 bar min./ advisable 1 bar \leq P \leq 5 bar.

Static pressure 10 bar max.

Valves operating outside the above conditions of use cannot be guaranteed to operate as Type 2 valves.

The valve is designed for use as a high-pressure valve; it is tested against BS EN 1111.

If a water supply is fed by gravity then the supply pressure should be verified to ensure the conditions of use are appropriate for the valve.

ATTENTION: in order to assure the maximum

efficiency of the mixer, the operating pressures (on hot and cold line) should be kept as balanced as possible and the inlet hot water must be at least 10°C above the required blend temperature.

When pressure is higher than 5 bar a pressure reducer is required to be fitted before the mixer.

DRAIN DOWN PROCEDURE

1. Close hot and cold mains feed taps.
2. To drain Thermostatic mixer:

- Remove the shower hose from the mixer or lay the showerhead and hose in the shower tray to drain off any trapped water.
- Turn bottom tap valve fully open
- Turn the top thermostat valve fully clockwise to drain cold water, until water stops flowing.

Push in the red temperature set button on the top thermostat valve and turn fully anticlockwise to drain the hot water side until the water stops flowing.

Note

If after the drain down procedure the Thermostatic Mixer Tap is to be left for long periods in cold or freezing conditions, leave the tap open and line up the ridge on the thermostat hand wheel with the letter "H" etched on the tap body (see picture below).

General Care

PROTECTING YOUR THERMOSTATIC MIXING TAP

In addition to draining down the Thermostatic Mixer Tap in periods of cold and freezing conditions, to offer maximum protection it is highly recommended that the Thermostatic Mixer Tap is further protected by following the method outlined below:

First complete the drain down procedure ensuring the hot and cold feeds are isolated and fully drained.

Using an allen key, remove the mixer body from the tails by releasing the grub screws taking care not to misplace these.

The unit can then be completely drained, dried and wrapped in a soft cloth for storage away from frost until required.

The Thermostatic Mixer Tap can then be re-attached as follows;

Re-fit body to the tails and tighten the grub screws, take care not to over tighten.

Re-connect to the water supplies and check seals.

PROTECTING YOUR THERMOSTATIC MIXER VALVE (BATH)

In addition to a shower Thermostatic Mixer Tap, if the Holiday Home has a bath fitted there will be a Thermostatic Mixer Valve to regulate the water temperature to the bath, this will be accessed by removing (lifting) the

General Care

lid covering the toilet system. This should be removed or correctly drained down during months in which frost may occur.



CLEANING

Your fitting has a high quality finish and should be treated with care to preserve the visible surfaces.

All surface finishes will wear if not cleaned correctly. The only safe way to clean your mixer is using soap water and a cloth. To dry use a soft cloth. Stains can be removed using washing up liquid. All bath cleaning powders and liquids will damage the surface of your fitting even the non-scratch cleaners.

FOR INFORMATION THAT IS MORE COMPREHENSIVE REFER TO YOUR V100 TMV2 USER AND MAINTENANCE INSTRUCTION BOOKLET.

High quality plastics are used in the construction of the shower room fittings. Never pour very hot or boiling water directly onto the basin or onto the shower tray - always add cold water first.

General Care

BATHROOM FITTINGS

Plastics can be cleaned using a very mild detergent in tepid water. Never use abrasive cleaner or chemical cleaner. NB. It is important not to pour hot water directly into or onto any plastic.

Always start with cold water and add the hot to achieve the desired temperature.

The shower cubicle and sanitary ware should be cleaned with detergent and warm water. Never use abrasive cleaners.

VITREOUS ENAMEL

Your holiday home will probably contain some vitreous components such as hob spillage well, pan supports. Vitreous enamel is not impact resistant, it is a toughened glass-type material backed by metal and should be treated with the same respect as toughened glass.

TAPS

These fittings have a high quality finish and should be treated with care to preserve the visible surface.

All surface finishes will wear if not cleaned correctly. The only safe way to clean is using soap and water and a cloth. To dry use a dry soft cloth. Stains can be removed using washing up liquid.

Most bath cleaning powders and liquids will damage the surface of your fittings even the non-scratch cleaners

KITCHEN

The kitchen worktop, sink, drainer and cooking equipment surfaces should only be cleaned with hot soapy water, unless the appliance manufacturer says otherwise in their own literature. Do not use abrasives and particularly not wire wool. The inside of ovens should be cleaned in accordance with the instructions contained in the manufacturer's leaflet.

BRANDED APPLIANCES AND COMPONENTS

YOU SHOULD NOT USE THE APPLIANCE BEFORE READING THE MANUFACTURER'S INSTRUCTIONS.

PLEASE READ AND UNDERSTAND ALL OPERATING INSTRUCTIONS PROVIDED BY EACH MANUFACTURER BEFORE USING THEIR APPLIANCE.

Most of the appliances fitted into your holiday home have an instruction leaflet issued by the manufacturer and you will find this leaflet either with the appliance or placed inside a locker in your holiday home. If one cannot be found, please notify your park/supplier who will write to the appliance manufacturer on your behalf or give you their

General Care

name and address if you wish to make contact with them.

FURNISHINGS

UPHOLSTERY CARE

Cleaning

Dust, dirt and grit should be removed frequently, as this will affect the durability and colour of your fabric. Remember, people dust wooden furniture because they can see dust particles, so please bear in mind that an amount of dust continually settles on your upholstery and may be allowed to remain because it is not visible. Please vacuum or brush your furniture frequently.

Spills and stains

Always deal with stains immediately. In the first instance remove excess with a soft absorbent cloth or white paper tissue. Cleaning instructions will vary according to the type of fabric you have selected.

Creasing

All fabrics are likely to crease, particularly on the arms and cushions. This is not a fault, but a natural feature, and will not affect the fabric's wearing qualities.

We strongly advise against washing any fabric, if in doubt, consult professional cleaning specialists.

Heat and light

Never leave your furniture in direct contact with or too close to a heat source, a radiator, fan or open fire. Avoid standing the furniture permanently in direct sunlight as the fabric colour may fade.

CARPET

Any proprietary carpet cleaner may be used, but it is recommended that you do not use excessive amounts of water.

VINYL FLOOR COVERING

Proper care of your floor prevents damage, extends its life and keeps it looking new for years.

Always vacuum or dust hard floor surfaces before mopping. Vinyl floors generally require only warm water for cleaning

FURNITURE

Use a damp cloth to remove finger marks, etc. or an all-purpose spray cleaner or a good quality furniture oil or abrasive cleaners.

It is recommended that cupboard catches, stays, sliding bolts and hinges are kept clean and lightly oiled or smeared with petroleum jelly.

General Care

SECURITY

PROTECTING YOUR HOLIDAY HOME AND POSSESSIONS

Windows and doors

Always close and lock windows and doors when leaving your holiday home, even if only for a few minutes. Consider fitting additional locks wherever necessary; ask your park/distributor/dealer for details on security locks.

It is very important, however, that any locks fitted to designated escape routes (i.e. door(s) and windows) are immobilised during occupation so that your escape remains unhindered.

Gas Cylinders

Keep them chained together and fastened to the substructure of your holiday home. Always use a good quality padlock.

Lights and alarms

Many devices, both battery powered and electrical, are available to the DIY enthusiast. A light inside your holiday home at night suggests it is occupied. Electricity triggered to turn on as darkness falls or battery operated with a time switch, the light will help deter thieves. Ask your park/distributor/dealer for details on electrical intruder alarms.

General Care

Marking your property with your postcode and house number would help the police identify the owners of stolen goods.

Advertising the fact that your property is so identified may act as a deterrent. Property can be marked by etching, die-stamping, branding, engraving or by using a security marker pen.

Organise yourselves on the holiday home park so that everyone keeps an eye open for strangers or anything suspicious.

Report any unusual activity to the park manager or the police.

Holiday homes on parks are vulnerable not only in summer but also in winter.

When your holiday home is left unattended for long periods, take any extra precautions and remove any items that are valuable or portable.

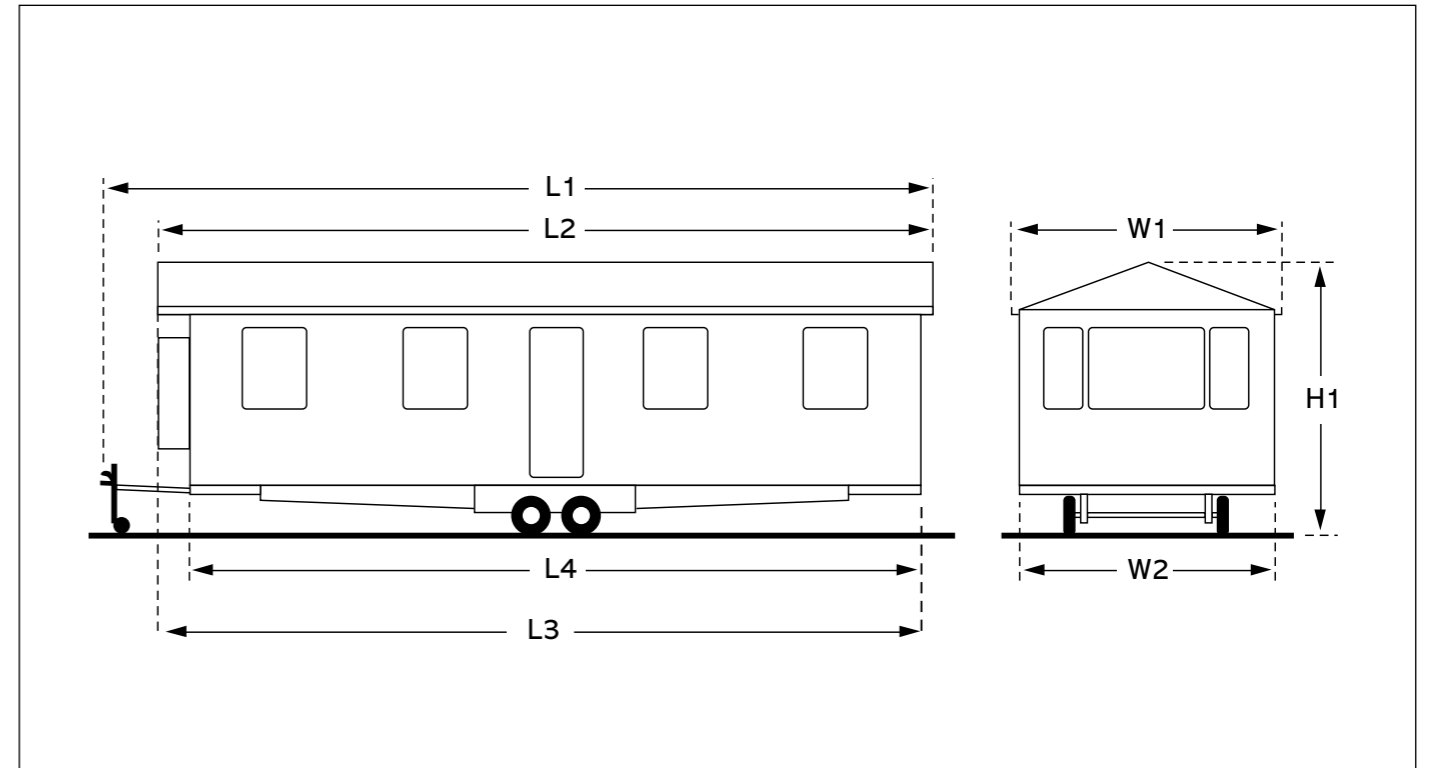
For free crime prevention advice about securing your holiday home, protecting your valuables or property marking either at home or whilst on park, contact the Crime Prevention Officer through your local police station

TECHNICAL INFORMATION

External Dimensions	56
Model Names, Berths and Bed Sizes.....	58
General Layouts & Ventilation and Emergency Exits	59
Plumbing (Water System)	80
Plumbing (Heating System).....	81
Electrical schematics.....	82

EXTERNAL DIMENSIONS

Model	L1	L2	L3	W1	W2	H1
Burgundy 28x10-2	9.25m (30'4")	9.05m (29'8")	8.63m (28'4")	3.33m (10'11")	3.05m (10'0")	3.29m (10'10")
Burgundy 35x10-3	11.55m (37'11")	11.34m (37'2")	10.93m (35'10")	3.33m (10'11")	3.05m (10'0")	3.29m (10'10")
Burgundy 28x12-2	9.25m (30'4")	9.05m (29'8")	8.63m (28'4")	3.94m (12'11")	3.66m (12'0")	3.41m (11'2")
Burgundy 32x10-3	10.39m (34'1")	10.18m (33'5")	9.77m (32'1")	3.33m (10'11")	3.05m (10'0")	3.29m (10'10")
Burgundy 32x12-2	10.39m (34'1")	10.18m (33'5")	9.77m (32'1")	3.94m (12'11")	3.66m (12'0")	3.41m (11'2")
Burgundy 35x12-2	11.55m (37'11")	11.34m (37'2")	10.93m (35'10")	3.94m (12'11")	3.66m (12'0")	3.41m (11'2")
Burgundy 35x12-3	11.55m (37'11")	11.34m (37'2")	10.93m (35'10")	3.94m (12'11")	3.66m (12'0")	3.41m (11'2")
Bordeaux 28x12-2	9.25m (30'4")	9.05m (29'8")	8.63m (28'4")	3.94m (12'11")	3.66m (12'0")	3.41m (11'2")
Bordeaux 32x12-2	10.39m (34'1")	10.18m (33'5")	9.77m (32'1")	3.94m (12'11")	3.66m (12'0")	3.41m (11'2")
Bordeaux 35x12-2	11.55m (37'11")	11.34m (37'2")	10.93m (35'10")	3.94m (12'11")	3.66m (12'0")	3.41m (11'2")
Bordeaux 35x12-3	11.55m (37'11")	11.34m (37'2")	10.93m (35'10")	3.94m (12'11")	3.66m (12'0")	3.41m (11'2")
Bordeaux 38x12-2	12.27m (40'3")	12.10m (39'8")	11.75m (38'7")	3.94m (12'11")	3.66m (12'0")	3.41m (11'2")
Moselle 30x12-2	9.81m (32'2")	9.59m (31'6")	9.19m (30'2")	3.94m (12'11")	3.66m (12'0")	3.41m (11'2")
Moselle 32x12-2	10.39m (34'1")	10.18m (33'5")	9.77m (32'1")	3.94m (12'11")	3.66m (12'0")	3.41m (11'2")
Moselle 35x12-2	11.55m (37'11")	11.34m (37'2")	10.93m (35'10")	3.94m (12'11")	3.66m (12'0")	3.41m (11'2")
Moselle 38x12-2	12.27m (40'3")	12.10m (39'8")	11.75m (38'7")	3.94m (12'11")	3.66m (12'0")	3.41m (11'2")
Moselle 38x12-3	12.27m (40'3")	12.10m (39'8")	11.75m (38'7")	3.94m (12'11")	3.66m (12'0")	3.41m (11'2")
Chamonix 39x12-2 (OL)	13.24m (43'5")	12.35m (40'6")	12.05m (39'6")	3.94m (12'11")	3.66m (12'0")	3.41m (11'2")
Chamonix 39x12-2 (CL)	13.24m (43'5")	12.35m (39'8")	12.05m (38'7")	3.94m (12'11")	3.66m (12'0")	3.41m (11'2")
Chamonix 39x12-3	13.24m (43'5")	12.35m (39'8")	12.05m (38'7")	3.94m (12'11")	3.66m (12'0")	3.41m (11'2")
Champagne 41x13-2	14.17m (46'6")	13.00m (42'8")	12.70m (41'8")	4.27m (14'0")	4.03m (13'3")	3.66m (12'0")

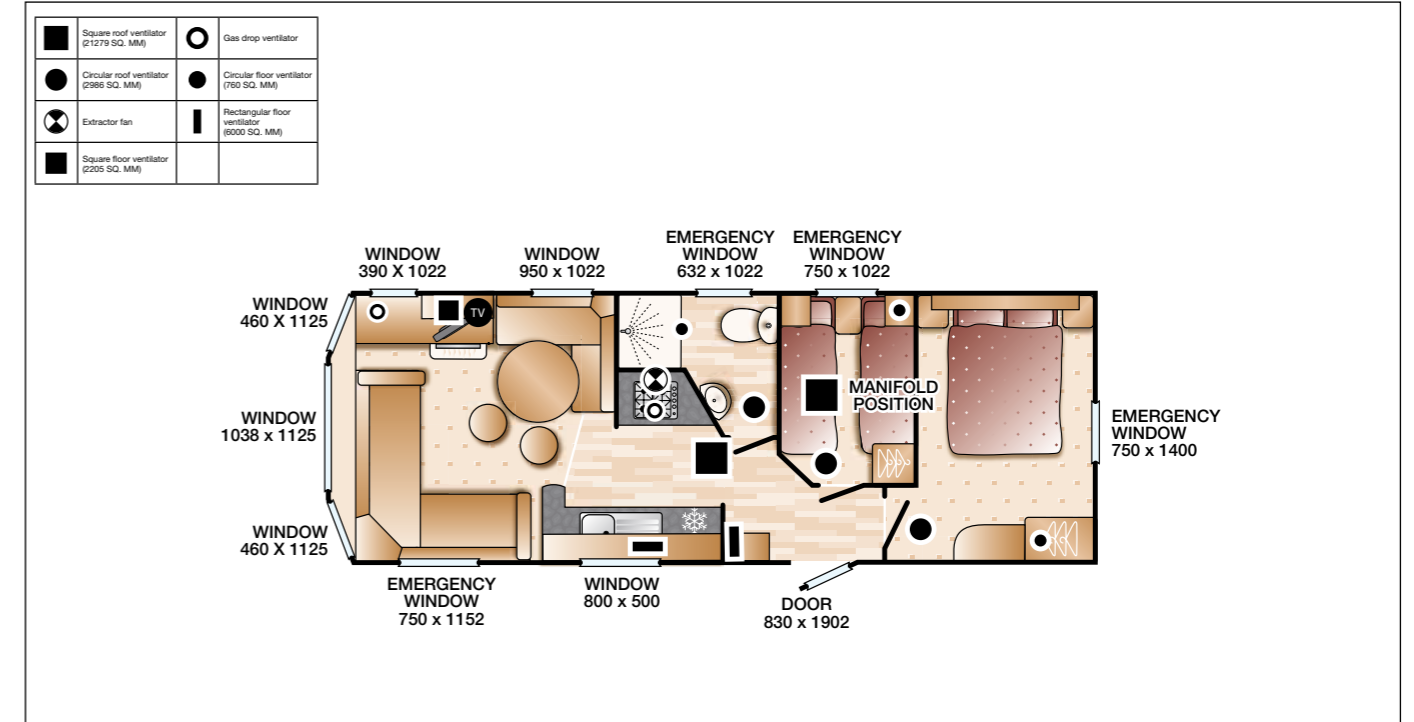


MODEL NAMES, BERTHS AND BED SIZES

Model	Berths	Double	Twin	Rear Twin	Sofa Bed
Burgundy 28x10-2	4 (Plus 2)	1.91x1.37m (6'3"x4'6")	1.83x0.61m (6'0"x2'0") / 1.76x0.61m (5'9"x2'0")	N/A	1.80x1.12m (5'11"x3'8")
Burgundy 35x10-3	6 (Plus 2)	1.91x1.37m (6'3"x4'6")	1.83x0.61m (6'0"x2'0") / 1.76x0.61m (5'9"x2'0")	1.83x0.61m (6'0"x2'0")	1.80x1.12m (5'11"x3'8")
Burgundy 32x10-3	6 (Plus 2)	1.91x1.37m (6'3"x4'6")	1.83x0.69m (6'0"x2'3") / 1.76x0.69m (5'9"x2'0")	N/A	1.80x1.12m (5'11"x3'8")
Burgundy 28x12-2	4 (Plus 2)	1.91x1.37m (6'3"x4'6")	1.83x0.69m (6'0"x2'3") / 1.76x0.69m (5'9"x2'0")	N/A	1.80x1.12m (5'11"x3'8")
Burgundy 32x12-2	4 (Plus 2)	1.91x1.37m (6'3"x4'6")	1.83x0.69m (6'0"x2'3") / 1.76x0.69m (5'9"x2'0")	N/A	1.80x1.12m (5'11"x3'8")
Burgundy 35x12-2	4 (Plus 2)	1.91x1.37m (6'3"x4'6")	1.83x0.69m (6'0"x2'3") / 1.76x0.69m (5'9"x2'0")	N/A	1.80x1.12m (5'11"x3'8")
Burgundy 35x12-3	6 (Plus 2)	1.91x1.37m (6'3"x4'6")	1.83x0.69m (6'0"x2'3") / 1.76x0.69m (5'9"x2'0")	1.83x0.61m (6'0"x2'0")	1.80x1.12m (5'11"x3'8")
Bordeaux 28x12-2	4 (Plus 2)	1.91x1.37m (6'3"x4'6")	1.83x0.69m (6'0"x2'3")	N/A	1.80x1.12m (5'11"x3'8")
Bordeaux 32x12-2	4 (Plus 2)	1.91x1.37m (6'3"x4'6")	1.83x0.69m (6'0"x2'3")	N/A	1.80x1.12m (5'11"x3'8")
Bordeaux 35x12-2	4 (Plus 2)	1.91x1.37m (6'3"x4'6")	1.83x0.69m (6'0"x2'3")	N/A	1.80x1.12m (5'11"x3'8")
Bordeaux 35x12-3	6 (Plus 2)	1.91x1.37m (6'3"x4'6")	1.83x0.69m (6'0"x2'3")	1.83x0.61m (6'0"x2'0")	1.80x1.12m (5'11"x3'8")
Bordeaux 38x12-2	4 (Plus 2)	1.91x1.53m (6'3"x5'0")	1.83x0.69m (6'0"x2'3")	N/A	1.80x1.12m (5'11"x3'8")
Moselle 30x12-2	4 (Plus 2)	1.91x1.37m (6'3"x4'6")	1.83x0.69m (6'0"x2'3")	N/A	1.80x1.12m (5'11"x3'8")
Moselle 32x12-2	4 (Plus 2)	1.91x1.37m (6'3"x4'6")	1.83x0.69m (6'0"x2'3")	N/A	1.80x1.12m (5'11"x3'8")
Moselle 35x12-2	4 (Plus 2)	1.91x1.37m (6'3"x4'6")	1.83x0.69m (6'0"x2'3")	N/A	1.80x1.12m (5'11"x3'8")
Moselle 38x12-2	4 (Plus 2)	1.91x1.53m (6'3"x5'0")	1.83x0.69m (6'0"x2'3")	N/A	1.80x1.12m (5'11"x3'8")
Moselle 38x12-3	6 (Plus 2)	1.91x1.37m (6'3"x4'6")	1.83x0.69m (6'0"x2'3")	1.83x0.61m (6'0"x2'0")	1.80x1.12m (5'11"x3'8")
Chamonix 39x12-2 (OL)	4 (Plus 2)	1.91x1.53m (6'3"x5'0")	1.83x0.69m (6'0"x2'3")	N/A	1.80x1.12m (5'11"x3'8")
Chamonix 39x12-2 (CL)	4 (Plus 2)	1.91x1.53m (6'3"x5'0")	1.83x0.69m (6'0"x2'3")	N/A	1.80x1.12m (5'11"x3'8")
Chamonix 39x12-3	6 (Plus 2)	1.91x1.37m (6'3"x4'6")	1.83x0.69m (6'0"x2'3")	1.83x0.61m (6'0"x2'0")	1.80x1.12m (5'11"x3'8")
Champagne 41x13-2	6 (Plus 2)	1.91x1.53m (6'3"x5'0")	1.83x0.75m (6'0"x2'6")	N/A	1.80x1.12m (5'11"x3'8")

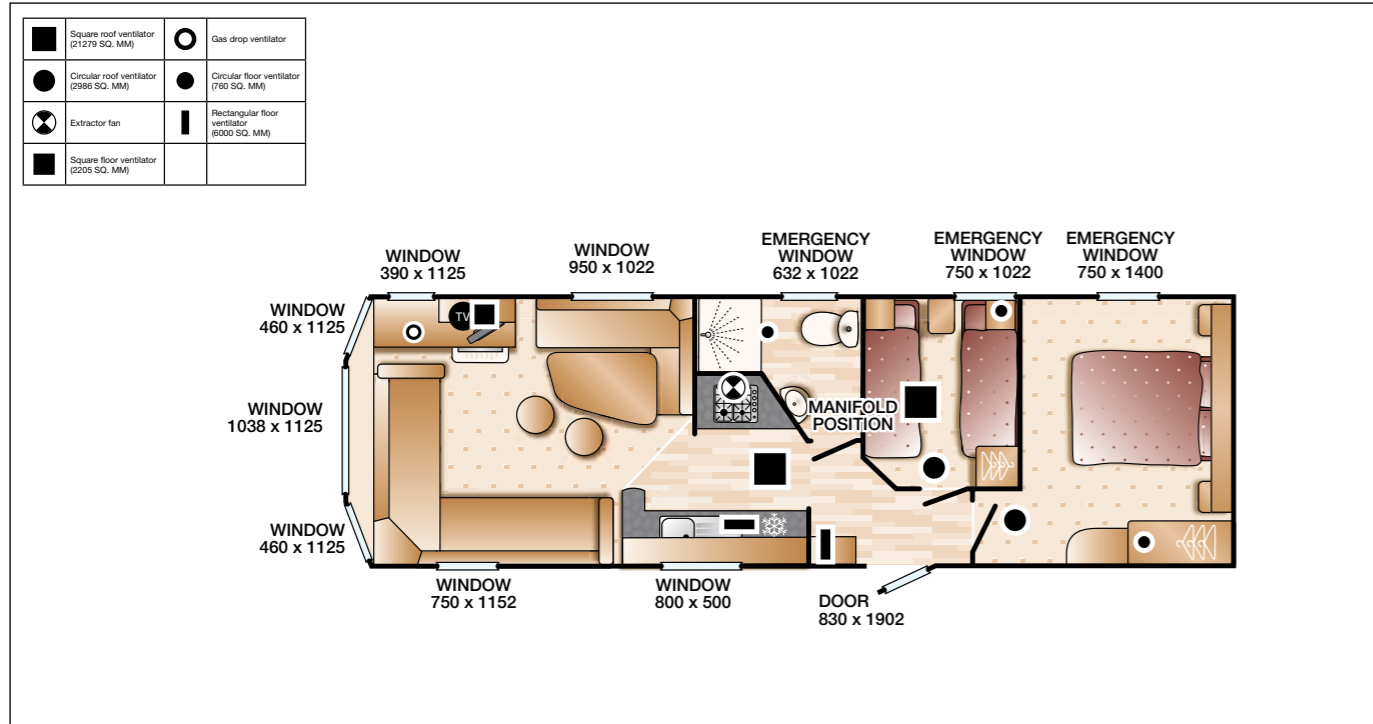
GENERAL LAYOUT SHOWING VENTILATION AND EMERGENCY EXITS

Burgundy 28' x 10' 2 bed layout



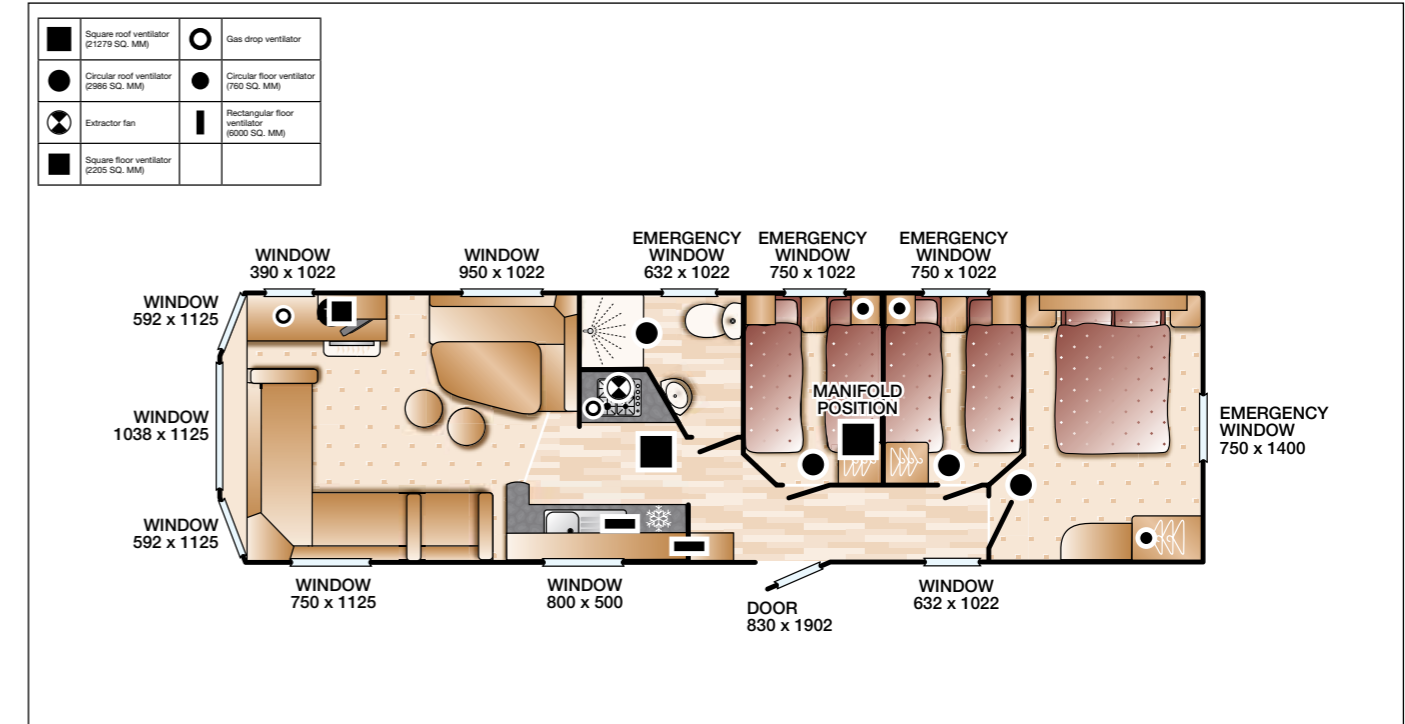
GENERAL LAYOUT SHOWING VENTILATION AND EMERGENCY EXITS

Burgundy 32' x 10' 2 bed layout



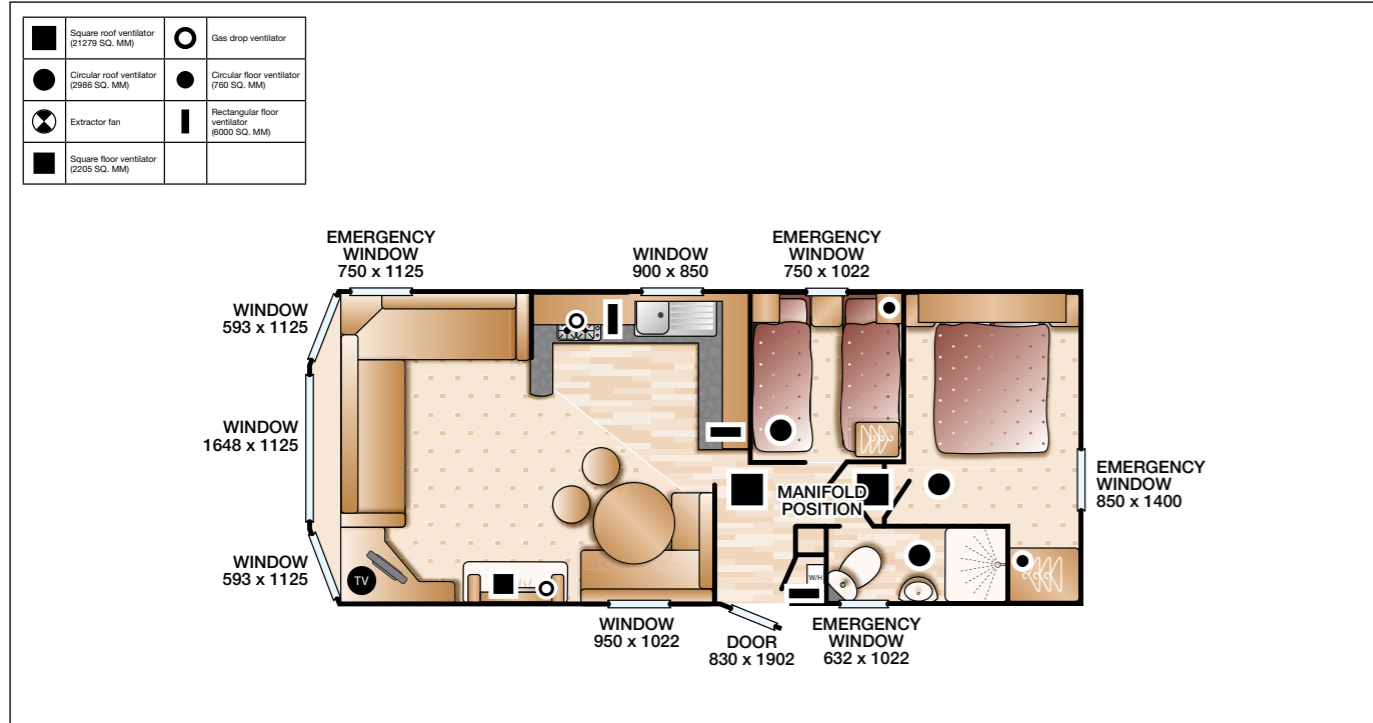
GENERAL LAYOUT SHOWING VENTILATION AND EMERGENCY EXITS

Burgundy 35' x 10' 3 bed layout



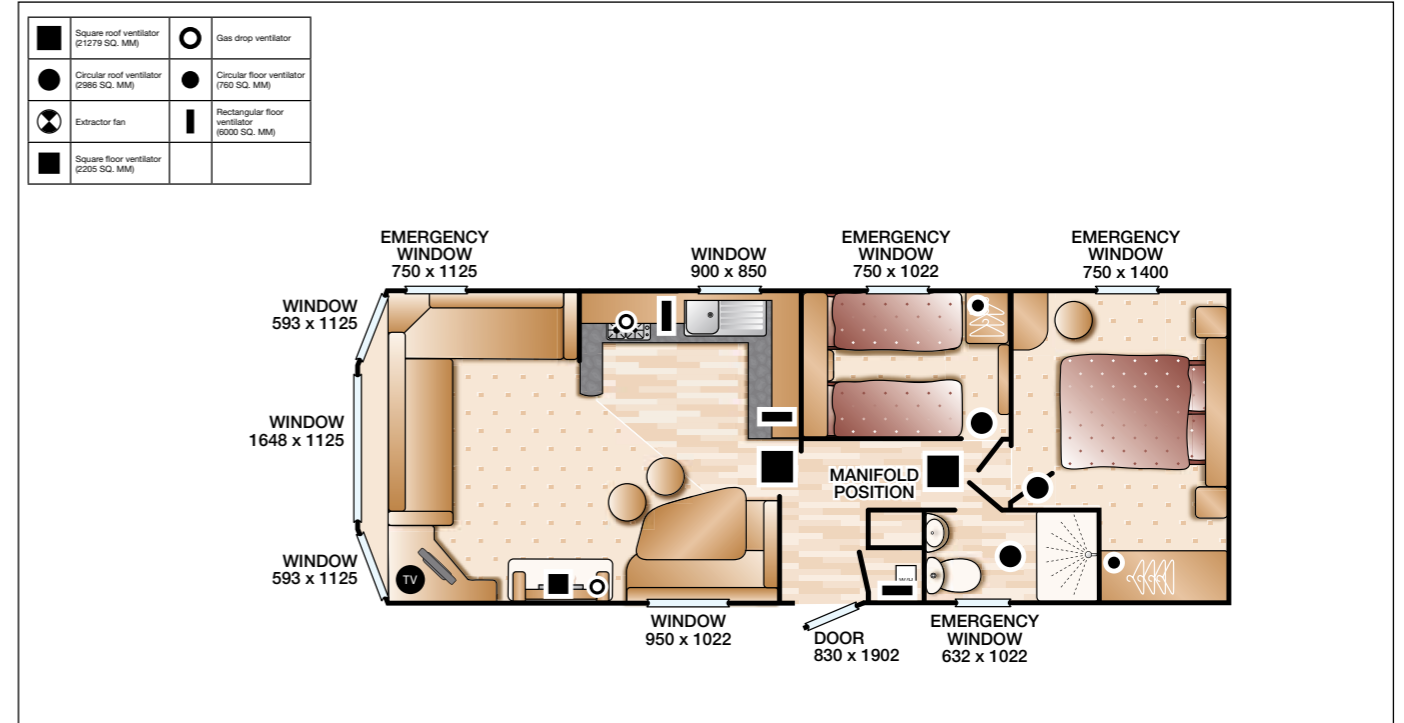
GENERAL LAYOUT SHOWING VENTILATION AND EMERGENCY EXITS

Burgundy 28' x 12' 2 bed layout



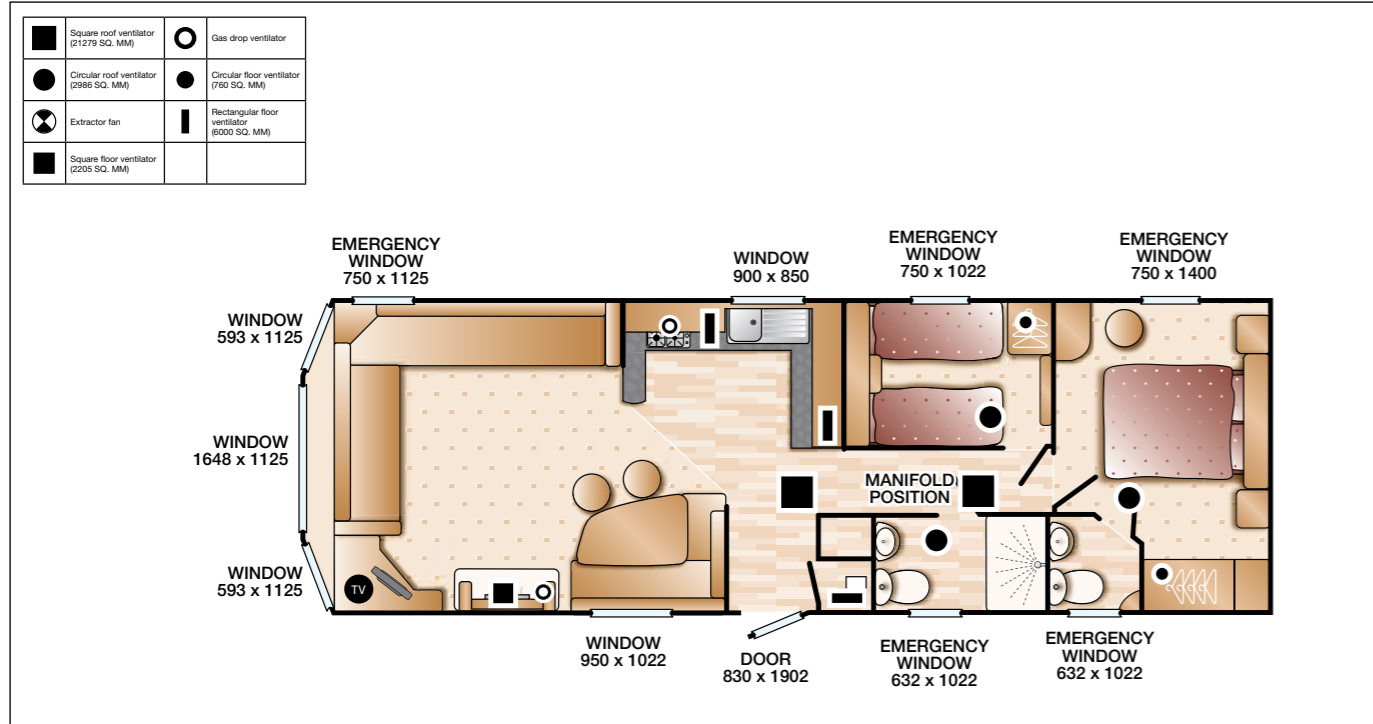
GENERAL LAYOUT SHOWING VENTILATION AND EMERGENCY EXITS

Burgundy 32' x 12' 2 bed layout



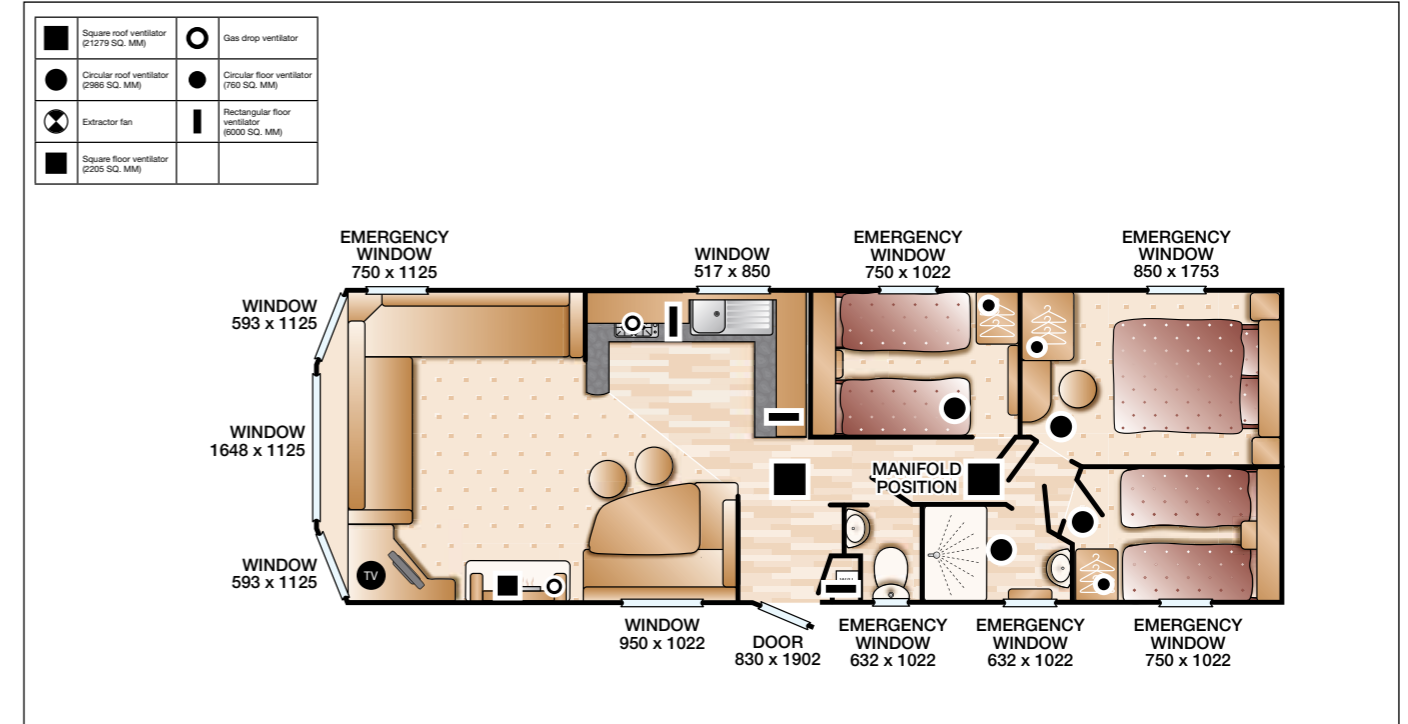
GENERAL LAYOUT SHOWING VENTILATION AND EMERGENCY EXITS

Burgundy 35' x 12' 2 bed layout



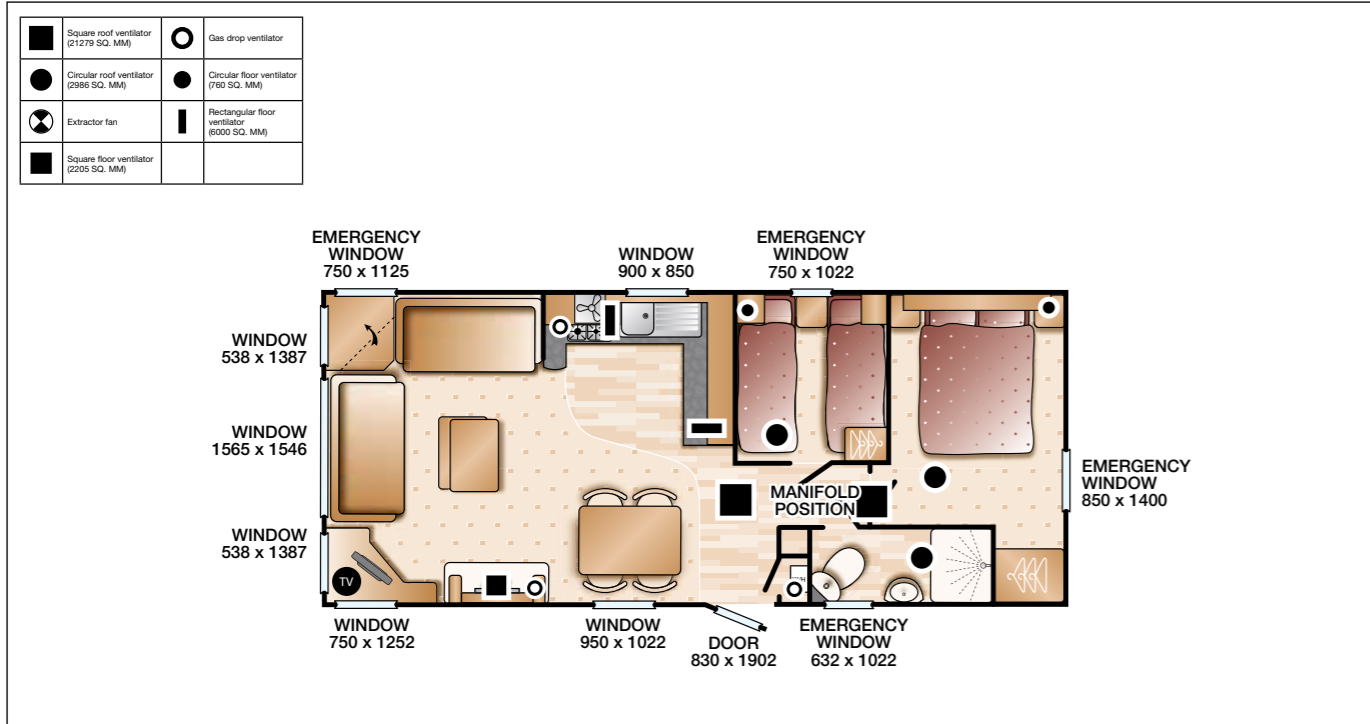
GENERAL LAYOUT SHOWING VENTILATION AND EMERGENCY EXITS

Burgundy 35' x 12' 3 bed layout



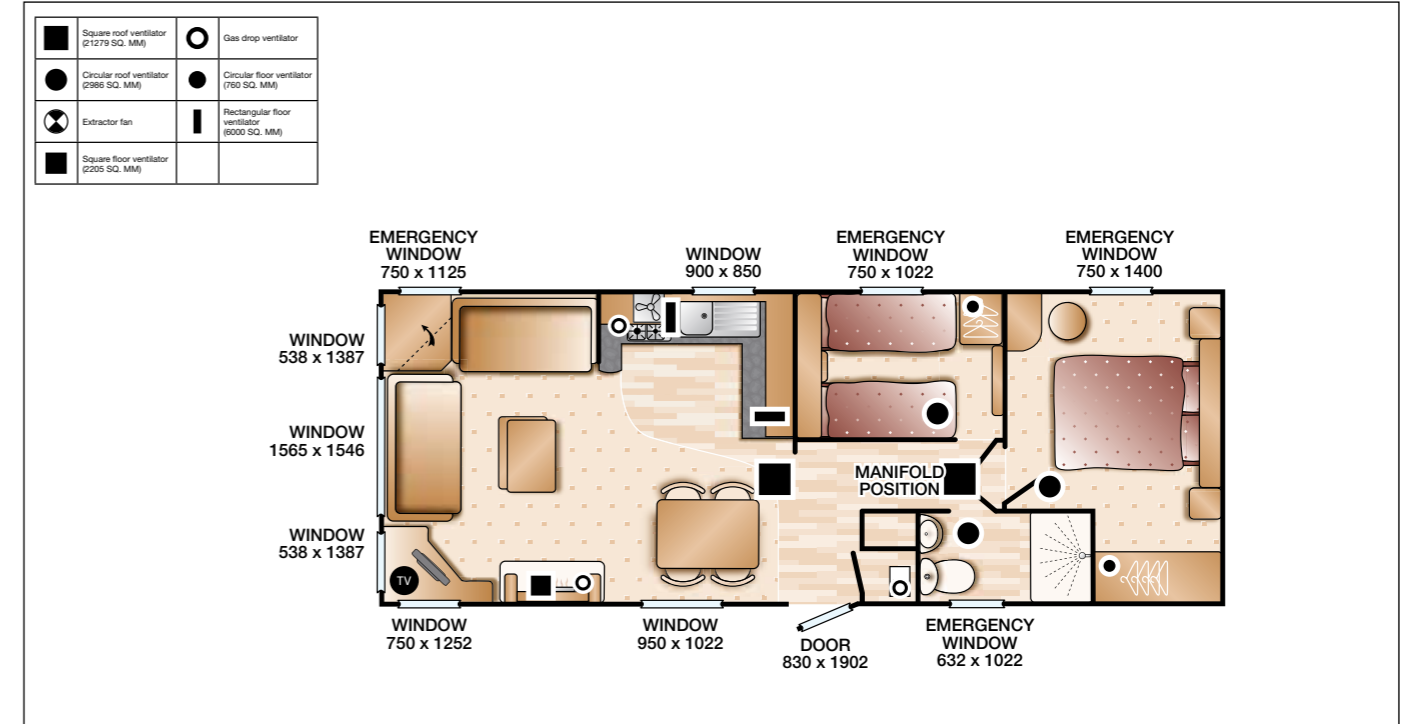
GENERAL LAYOUT SHOWING VENTILATION AND EMERGENCY EXITS

Bordeaux 28' x 12' 2 bed layout



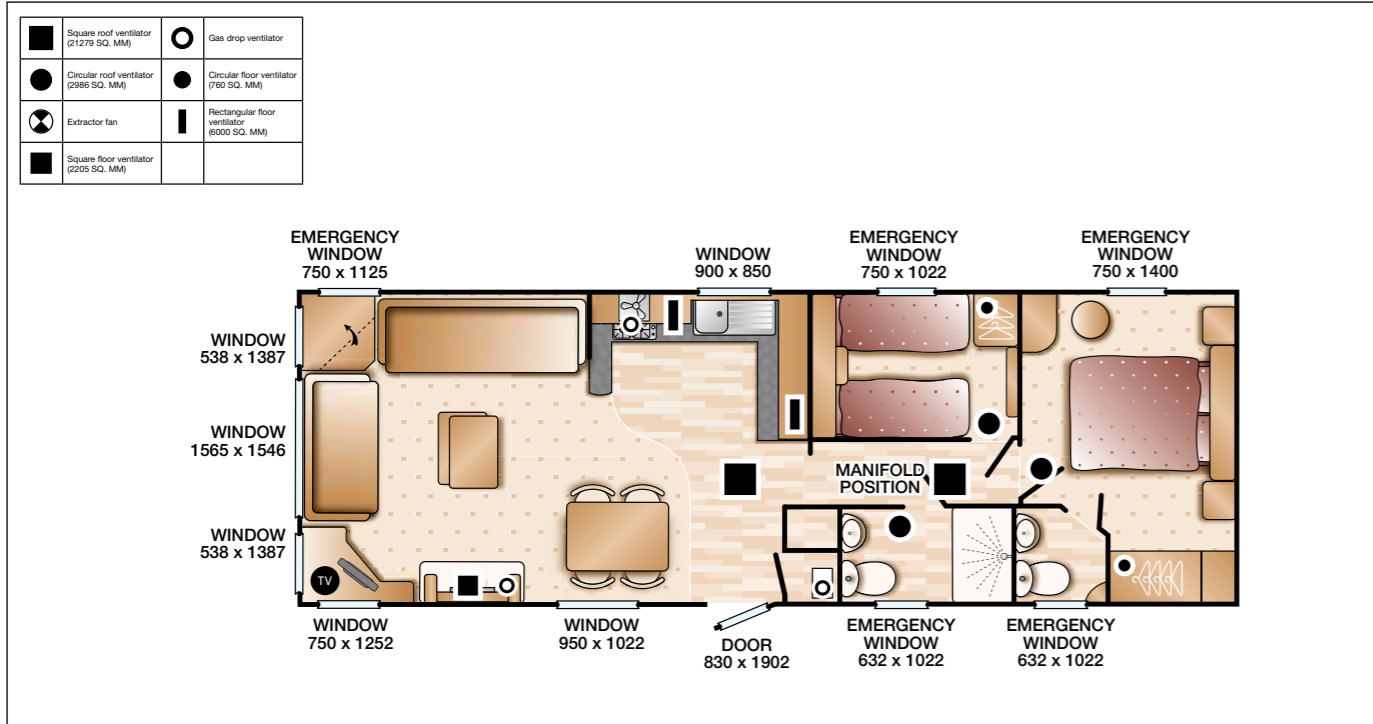
GENERAL LAYOUT SHOWING VENTILATION AND EMERGENCY EXITS

Bordeaux 32' x 12' 2 bed layout



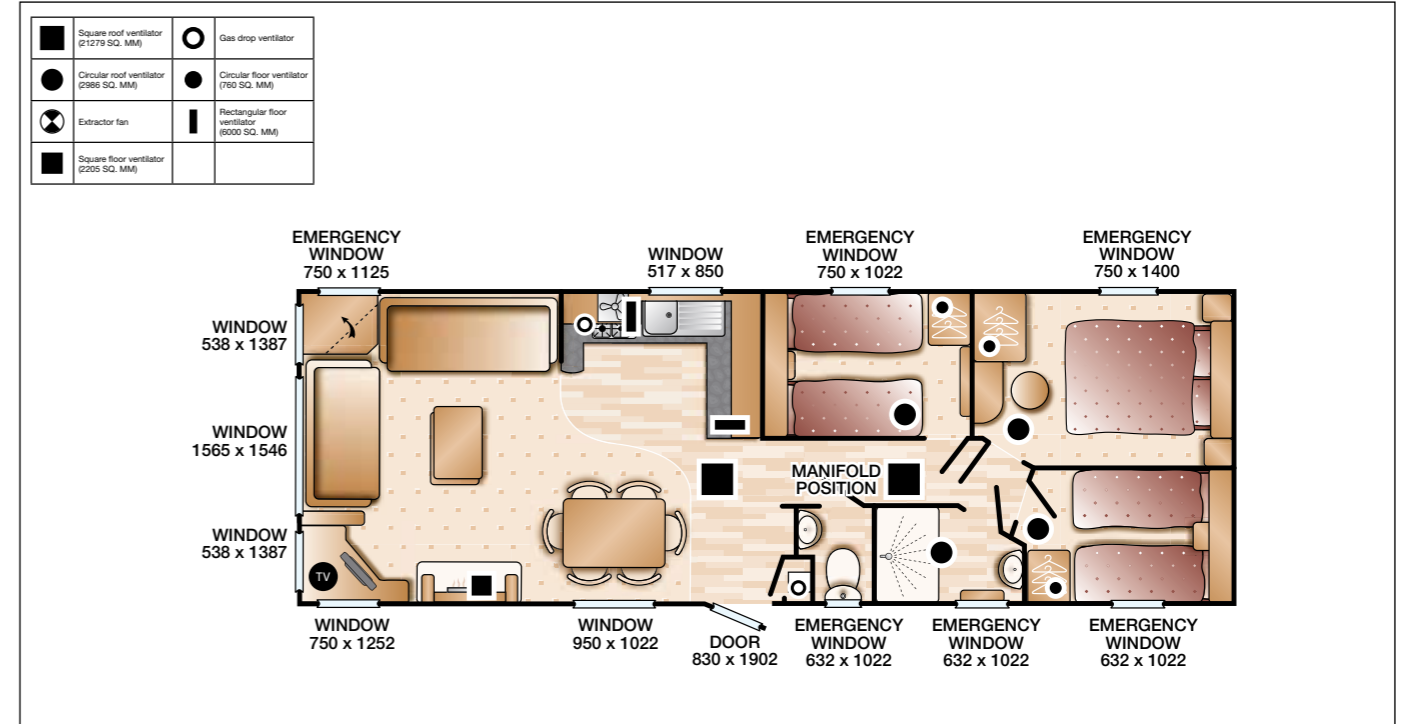
GENERAL LAYOUT SHOWING VENTILATION AND EMERGENCY EXITS

Bordeaux 35' x 12' 2 bed layout



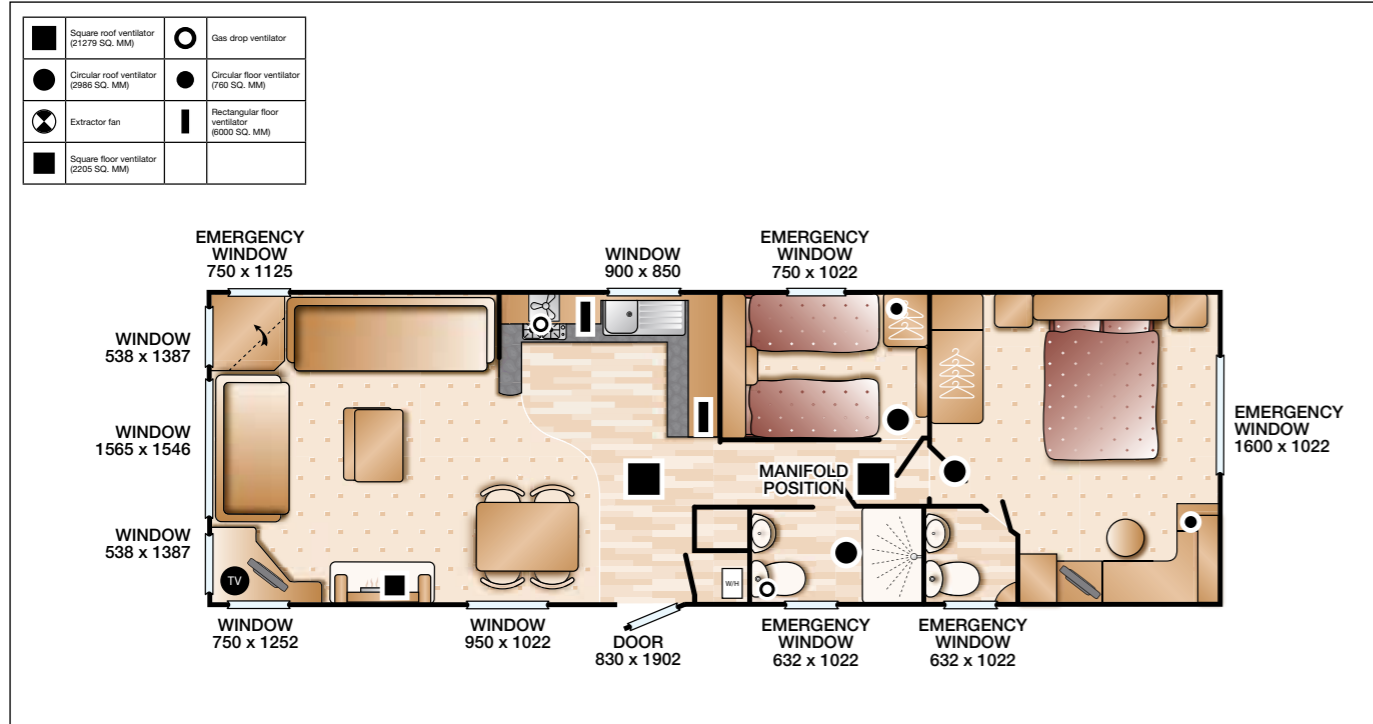
GENERAL LAYOUT SHOWING VENTILATION AND EMERGENCY EXITS

Bordeaux 35' x 12' 3 bed layout



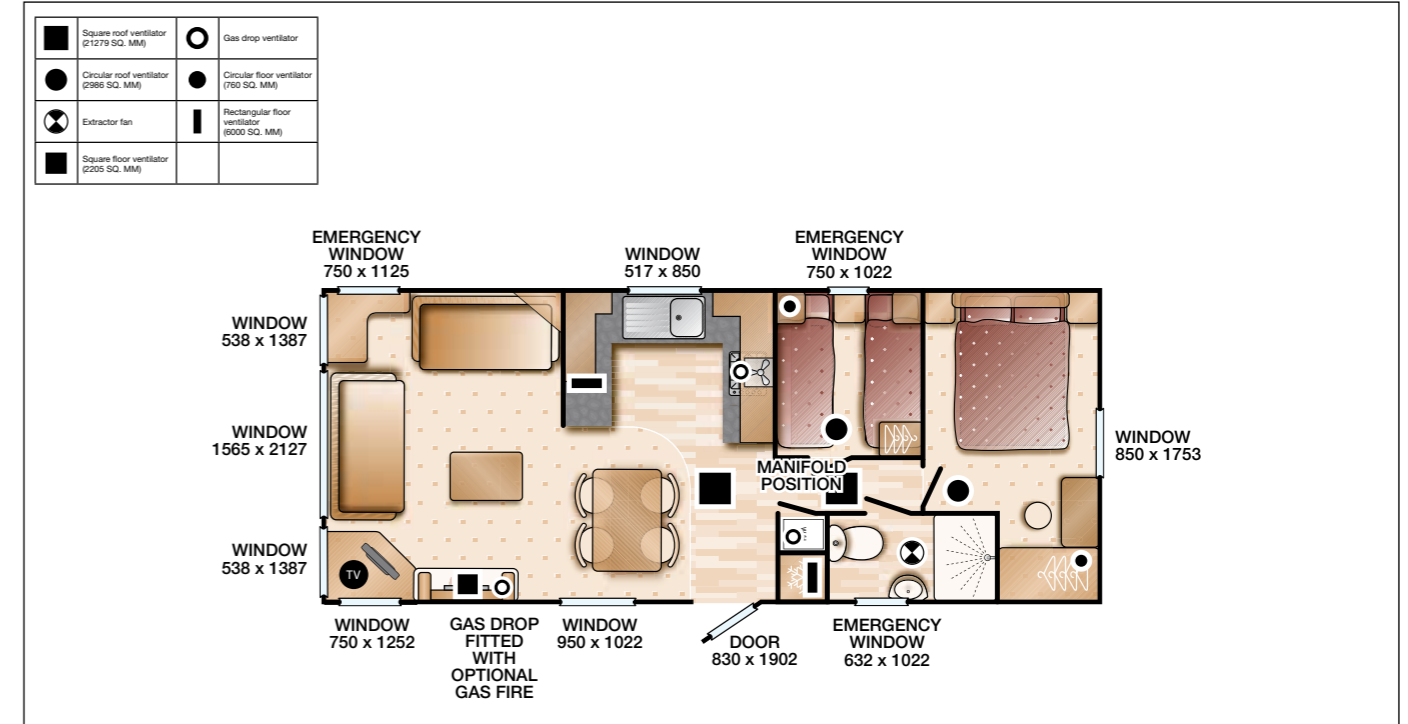
GENERAL LAYOUT SHOWING VENTILATION AND EMERGENCY EXITS

Bordeaux 38' x 12' 2 bed layout



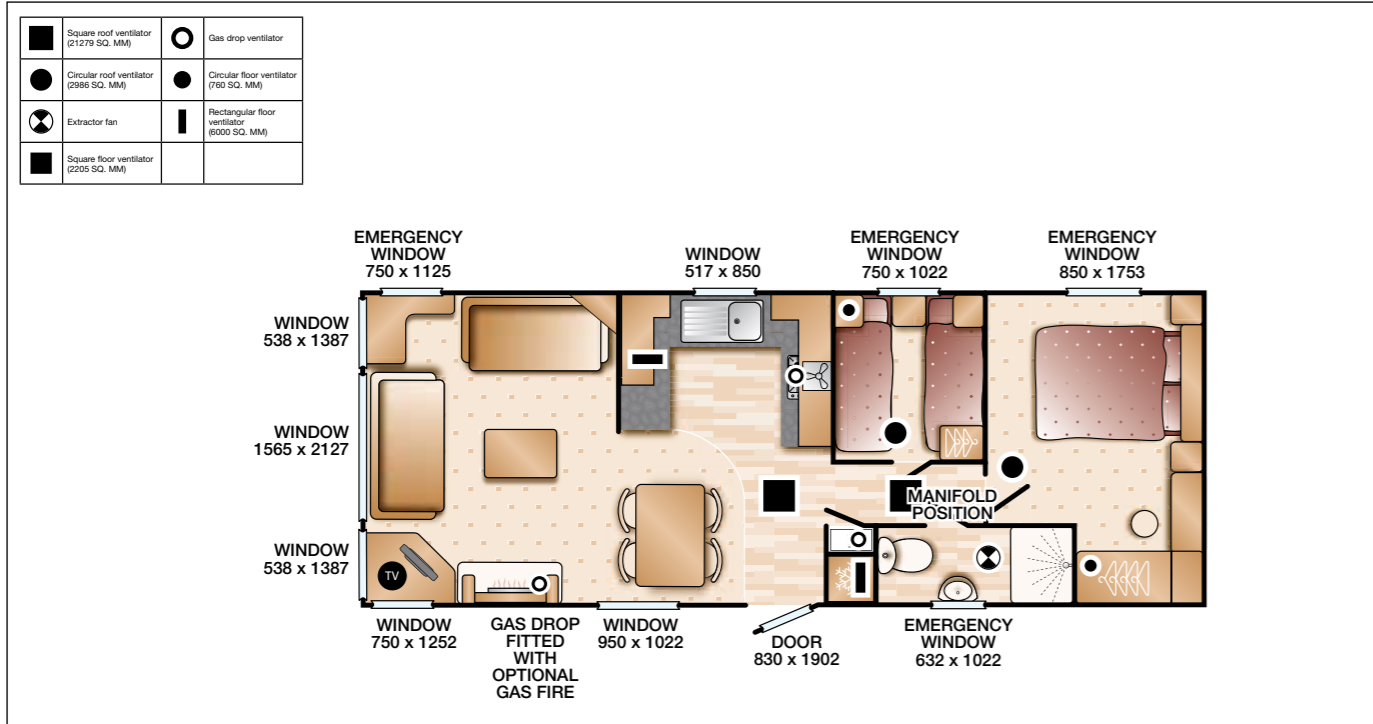
GENERAL LAYOUT SHOWING VENTILATION AND EMERGENCY EXITS

Moselle 30' x 12' 2 bed layout



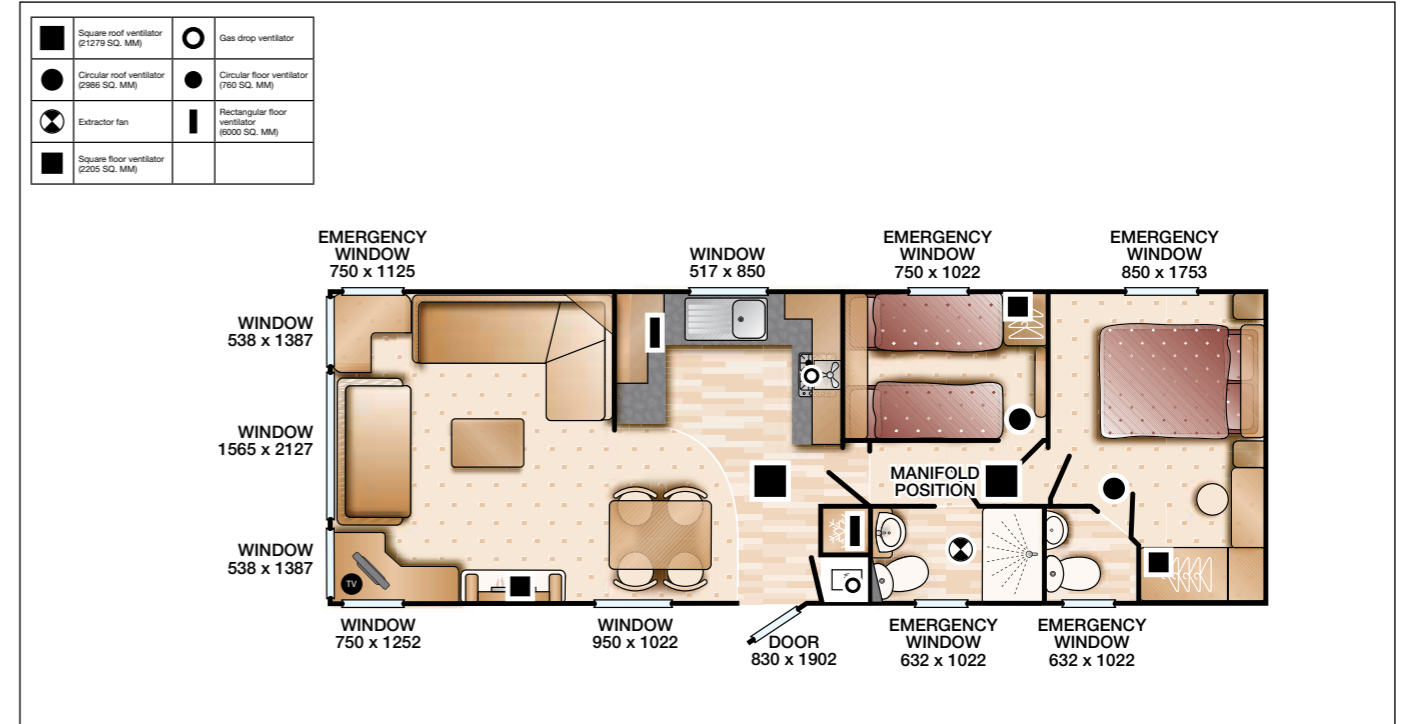
GENERAL LAYOUT SHOWING VENTILATION AND EMERGENCY EXITS

Moselle 32' x 12' 2 bed layout



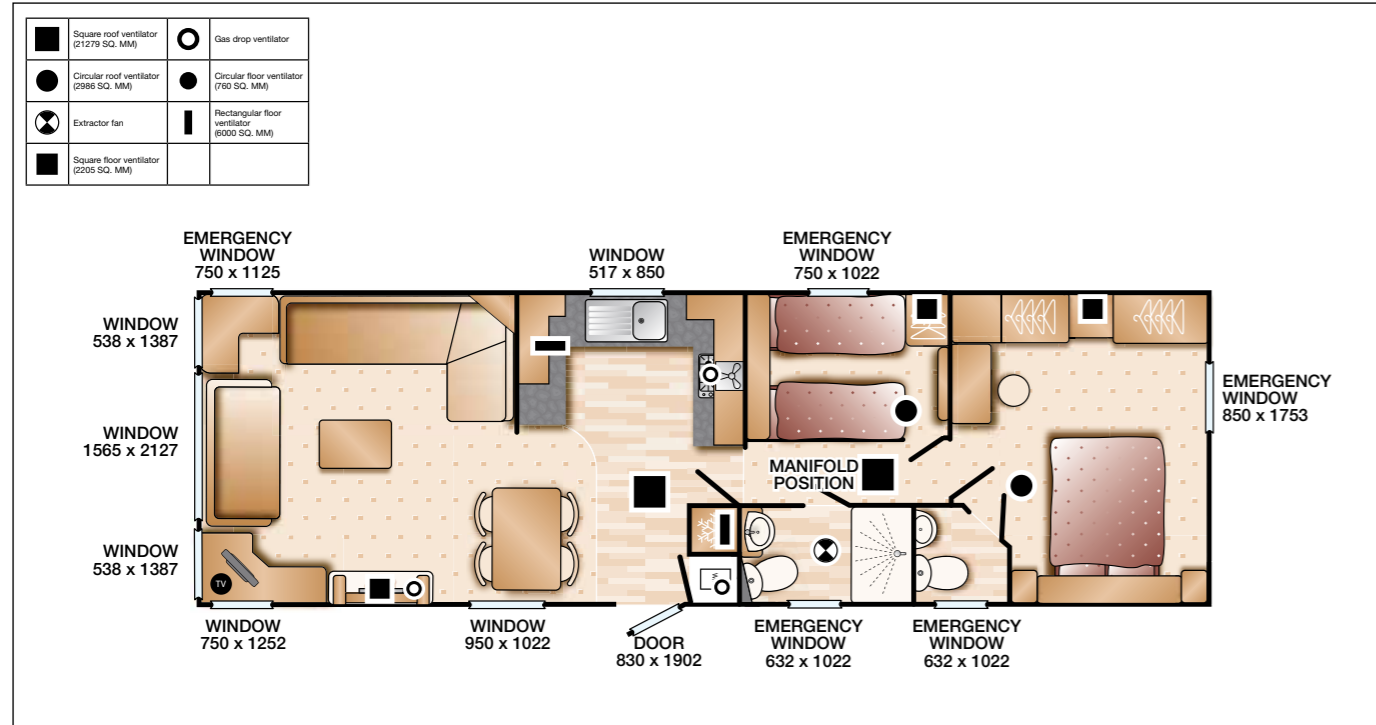
GENERAL LAYOUT SHOWING VENTILATION AND EMERGENCY EXITS

Moselle 35' x 12' 2 bed layout



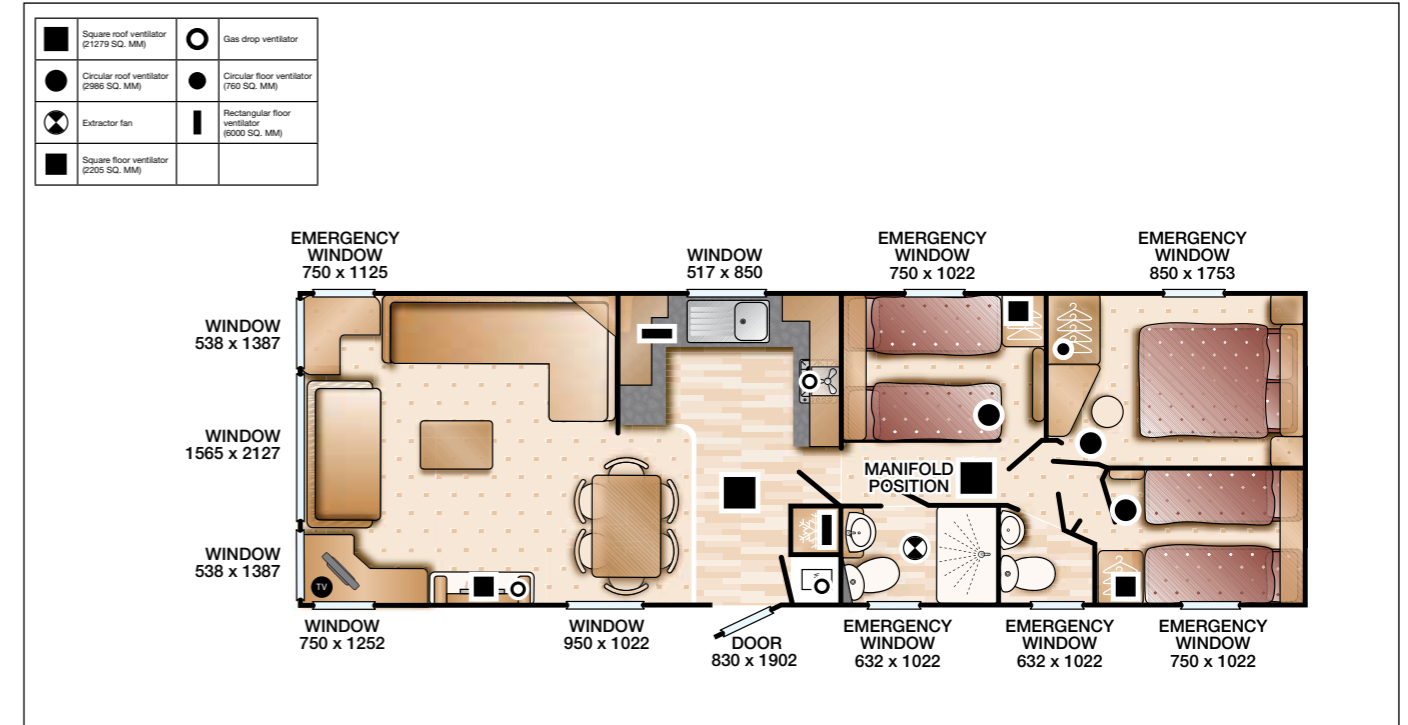
GENERAL LAYOUT SHOWING VENTILATION AND EMERGENCY EXITS

Moselle 38' x 12' 2 bed layout



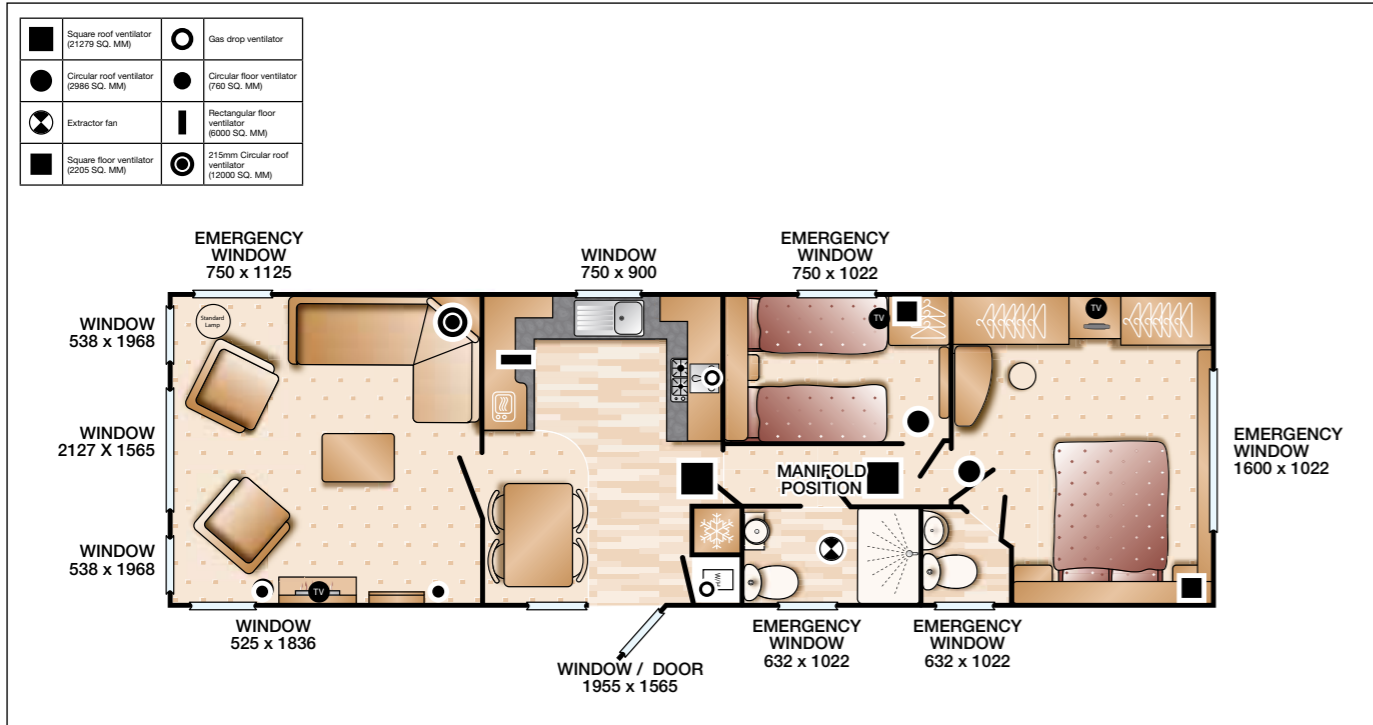
GENERAL LAYOUT SHOWING VENTILATION AND EMERGENCY EXITS

Moselle 38' x 12' 3 bed layout



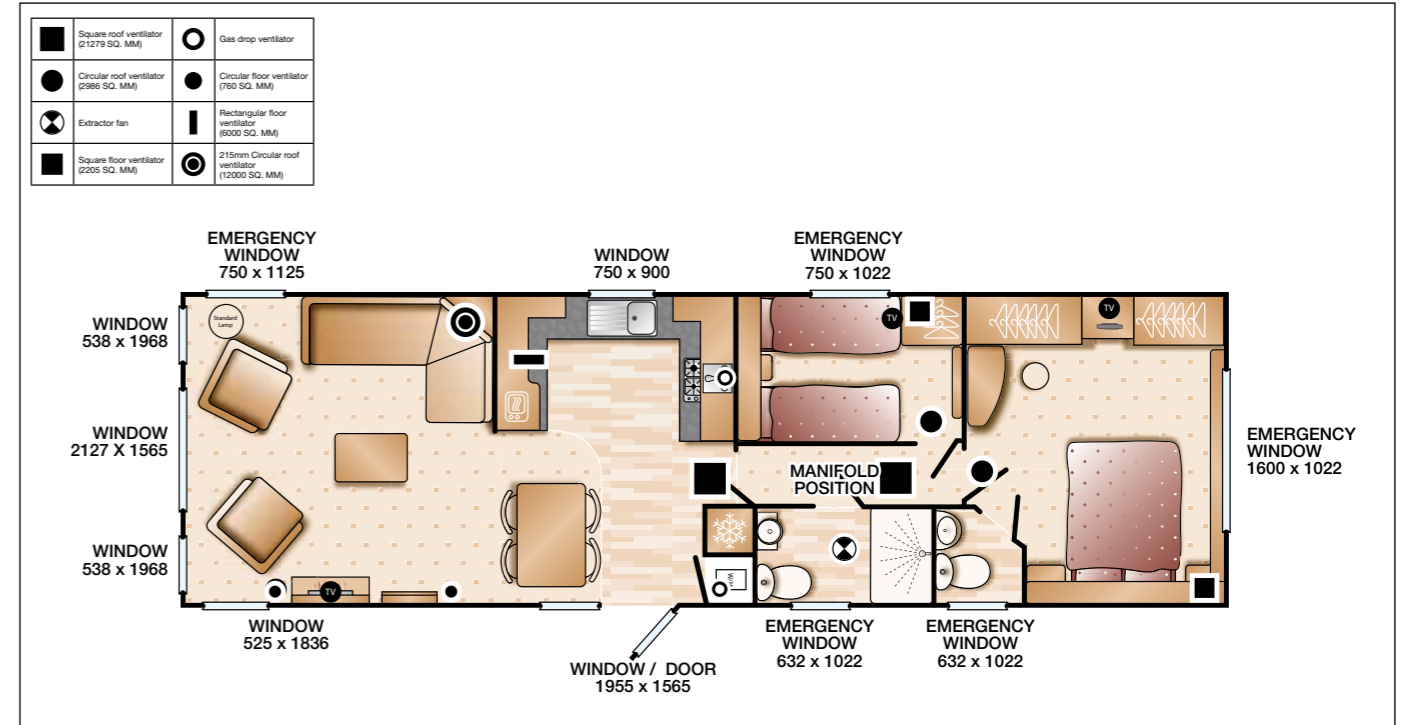
GENERAL LAYOUT SHOWING VENTILATION AND EMERGENCY EXITS

Chamonix 39' x 12' 2 bed layout closed lounge



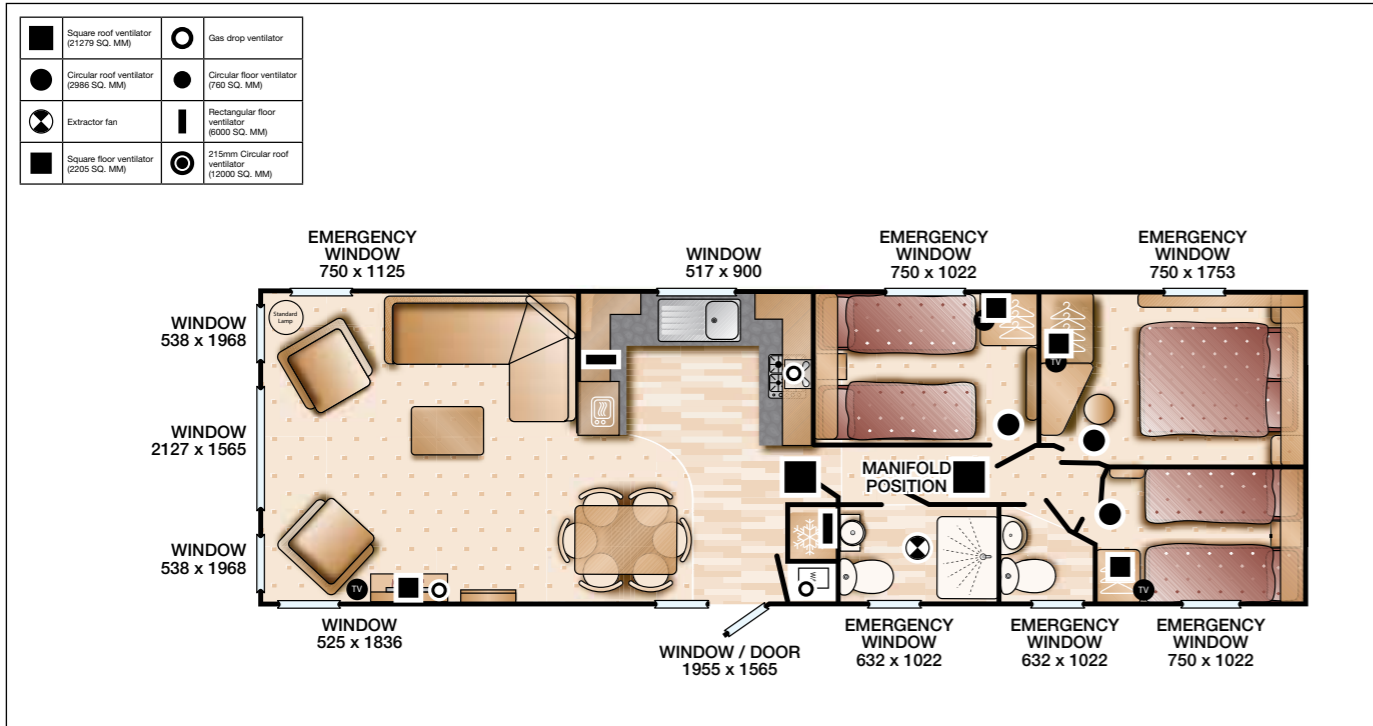
GENERAL LAYOUT SHOWING VENTILATION AND EMERGENCY EXITS

Chamonix 39' x 12' 2 bed layout open lounge



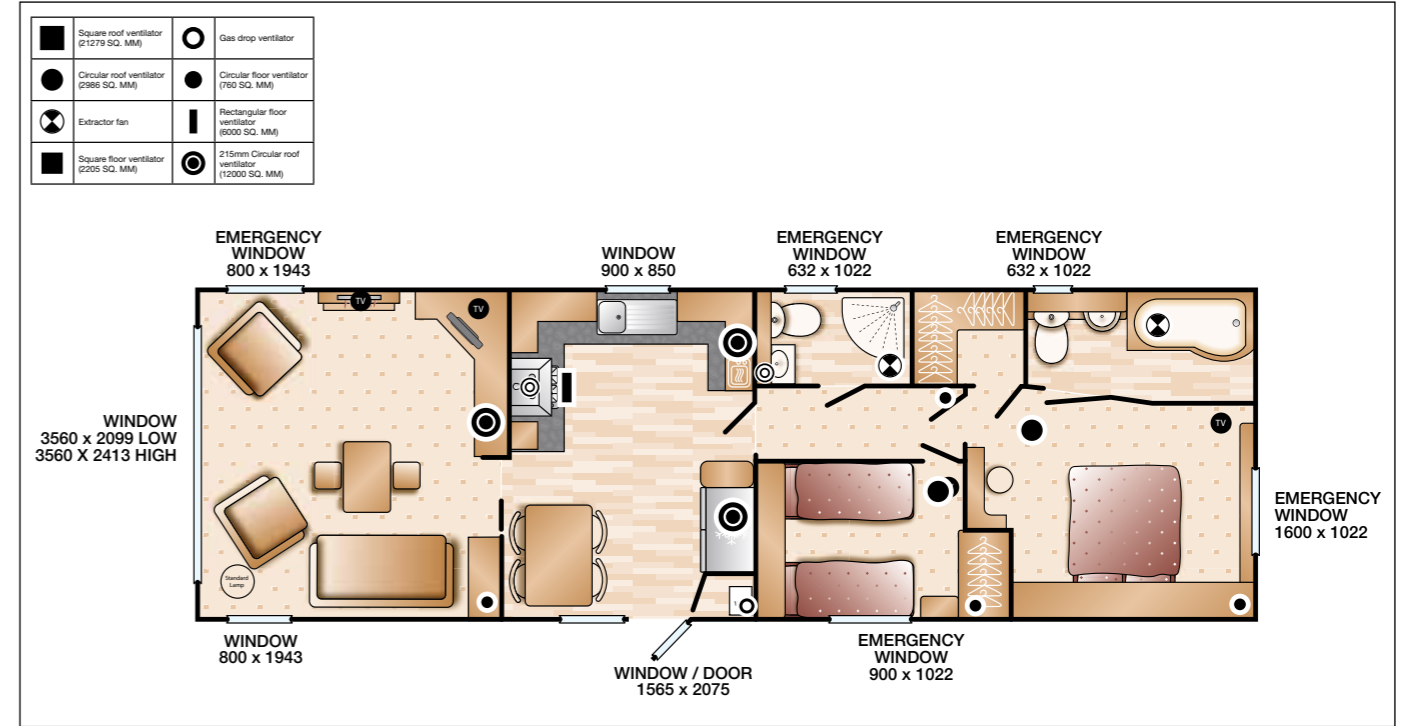
GENERAL LAYOUT SHOWING VENTILATION AND EMERGENCY EXITS

Chamonix 39' x 12' 3 bed layout

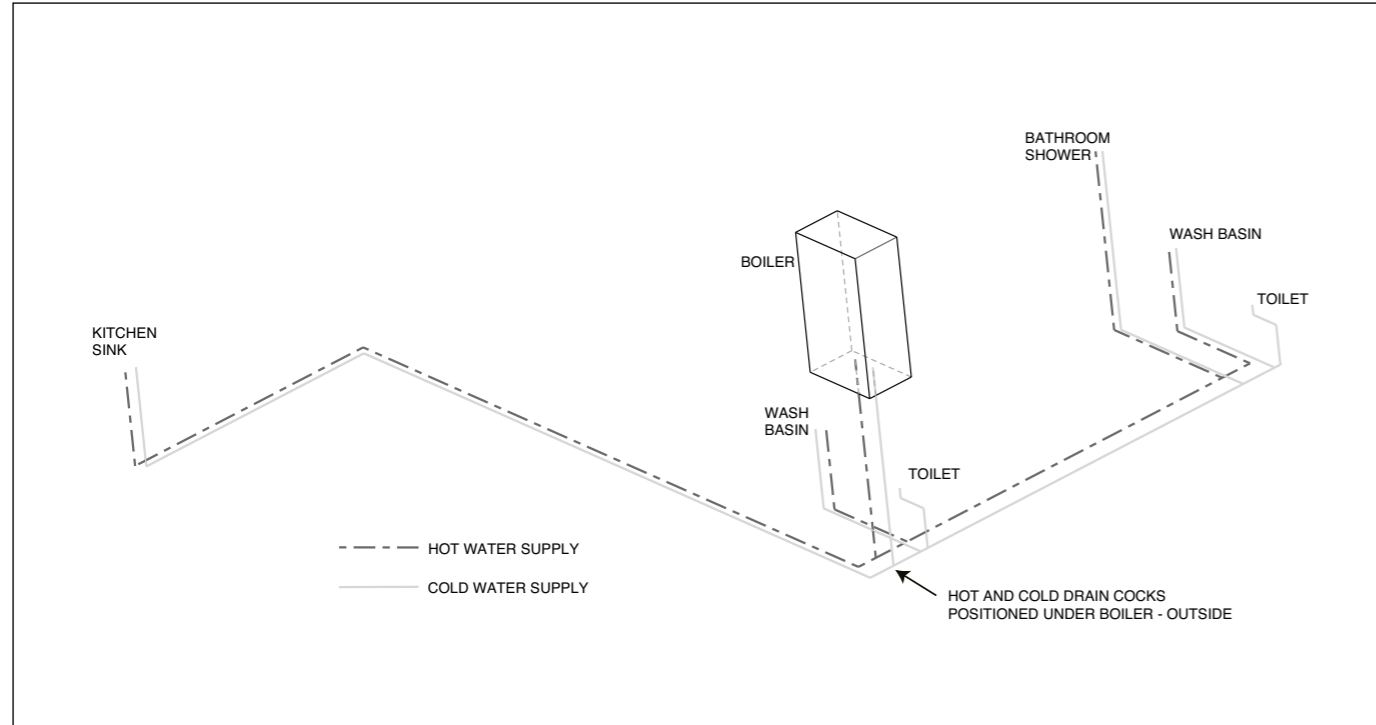


GENERAL LAYOUT SHOWING VENTILATION AND EMERGENCY EXITS

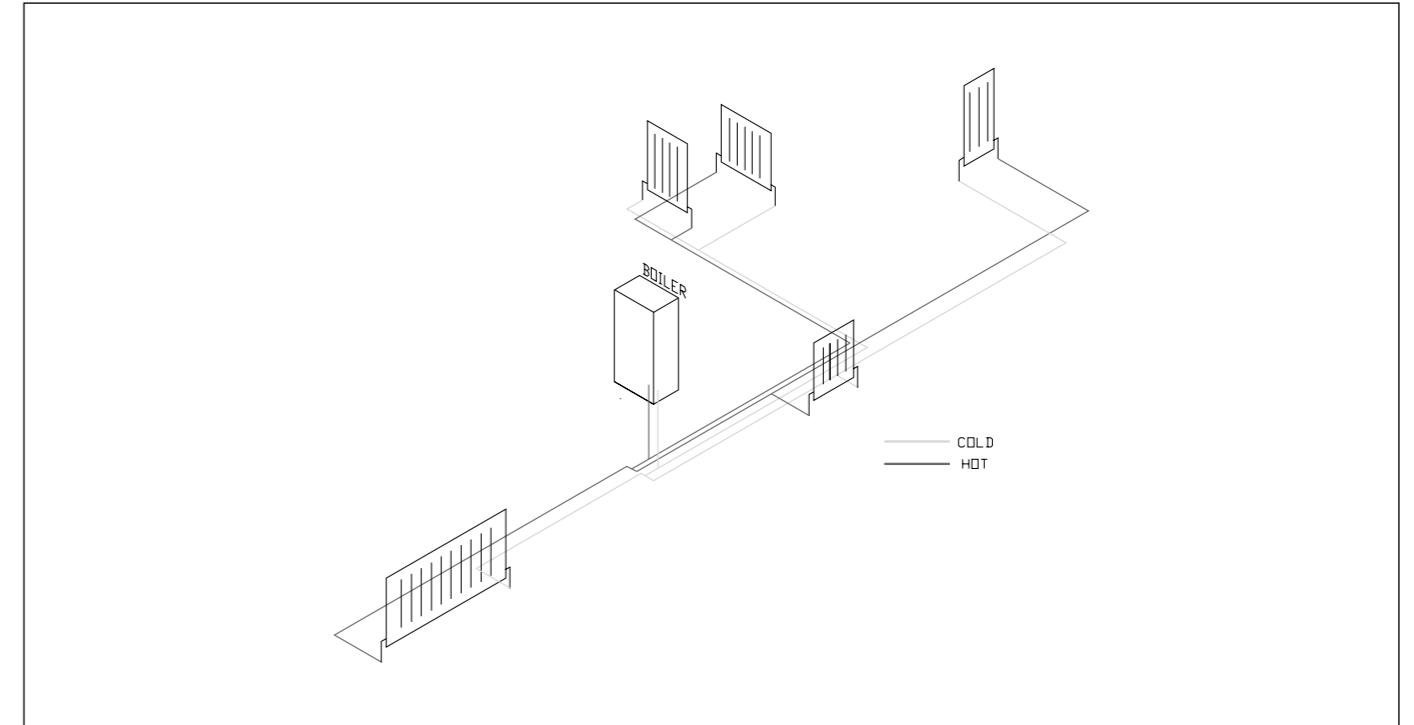
Champagne 41' x 13' 2 bed layout



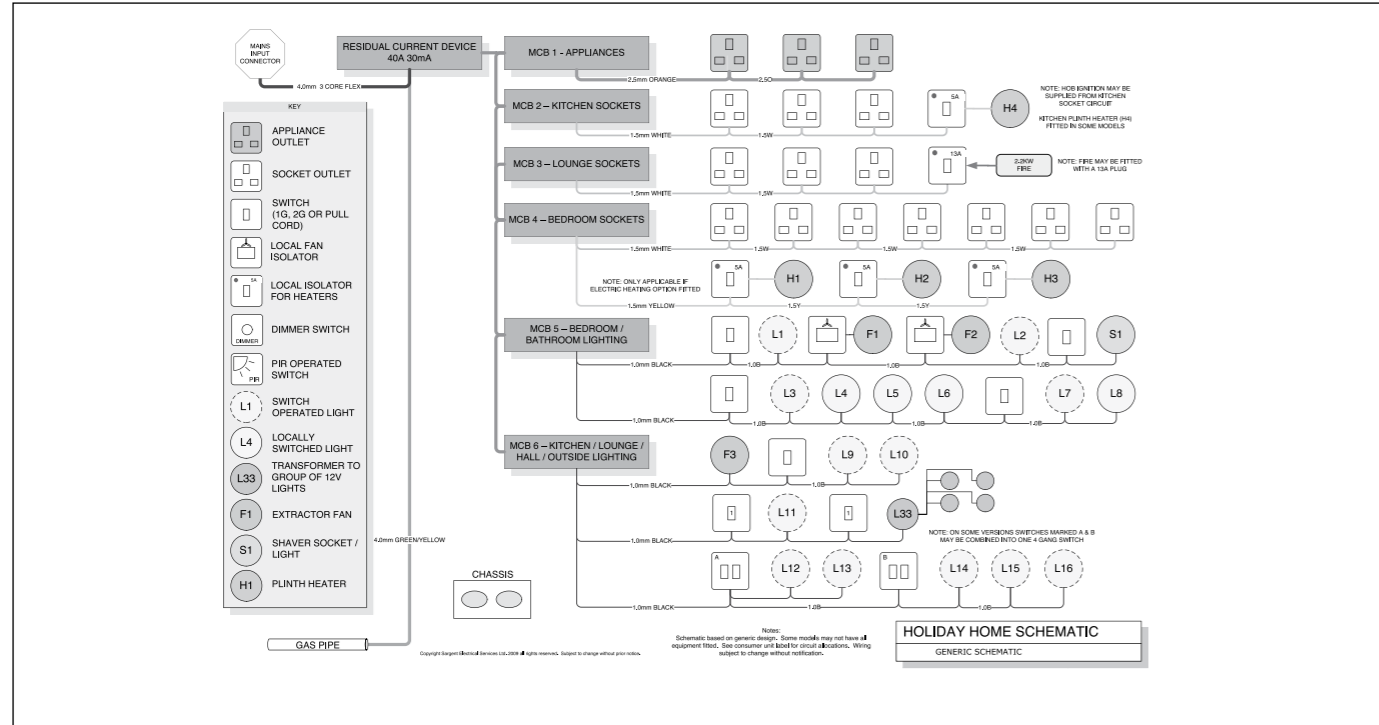
PLUMBING (TYPICAL WATER SYSTEM)



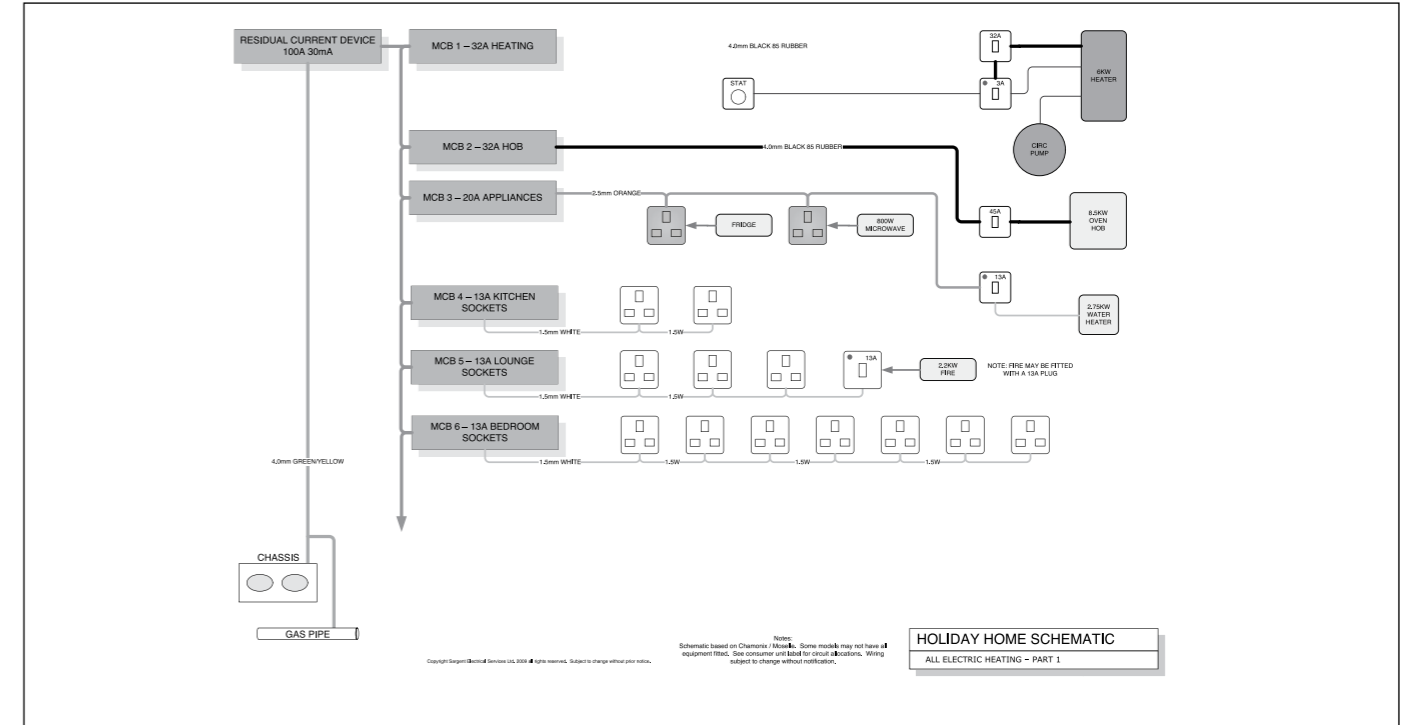
PLUMBING (TYPICAL HEATING SYSTEM)



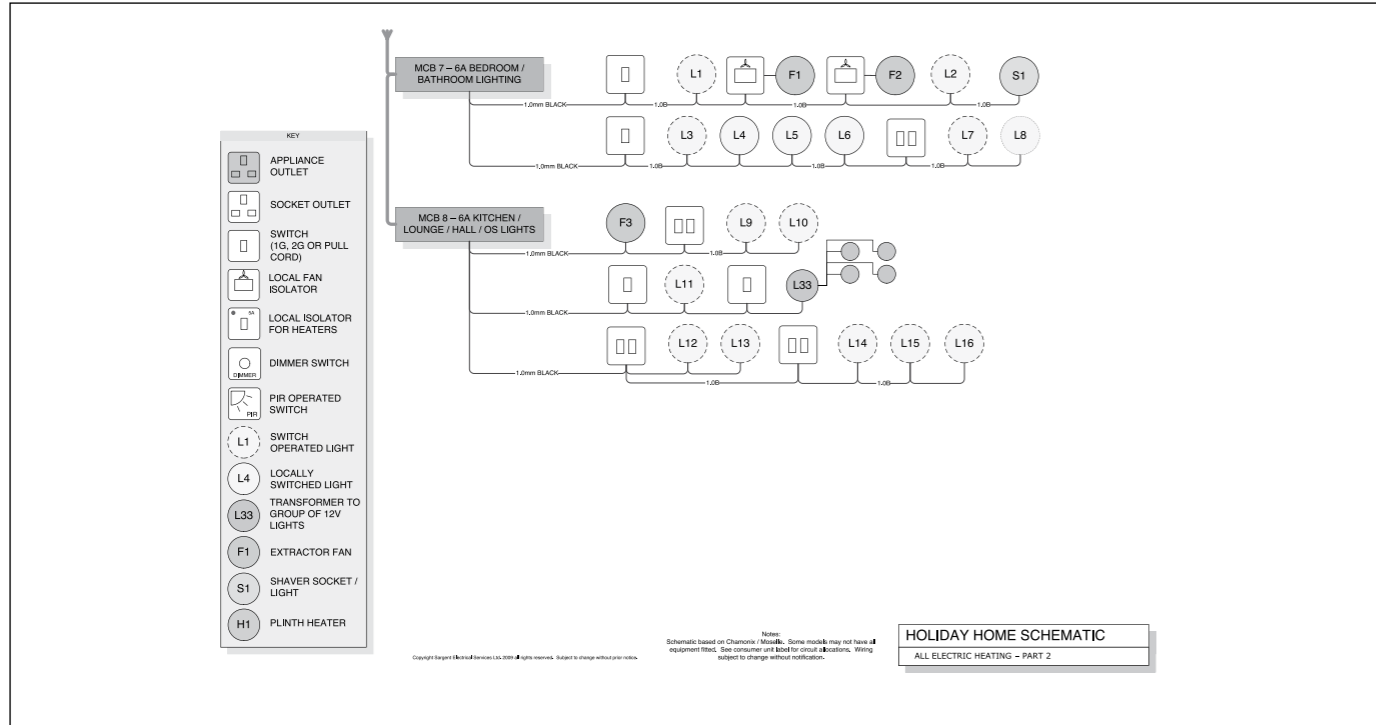
GENERIC SCHEMATIC



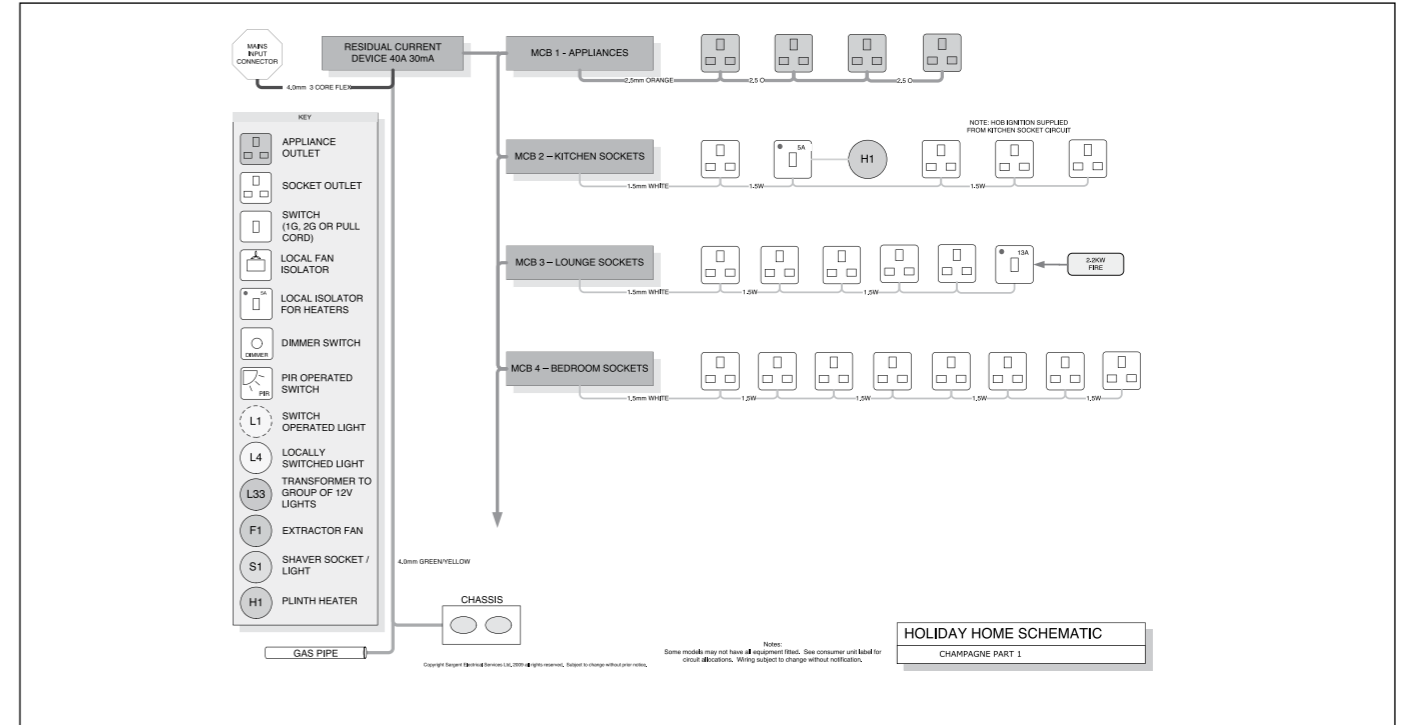
ALL ELECTRIC HEATING



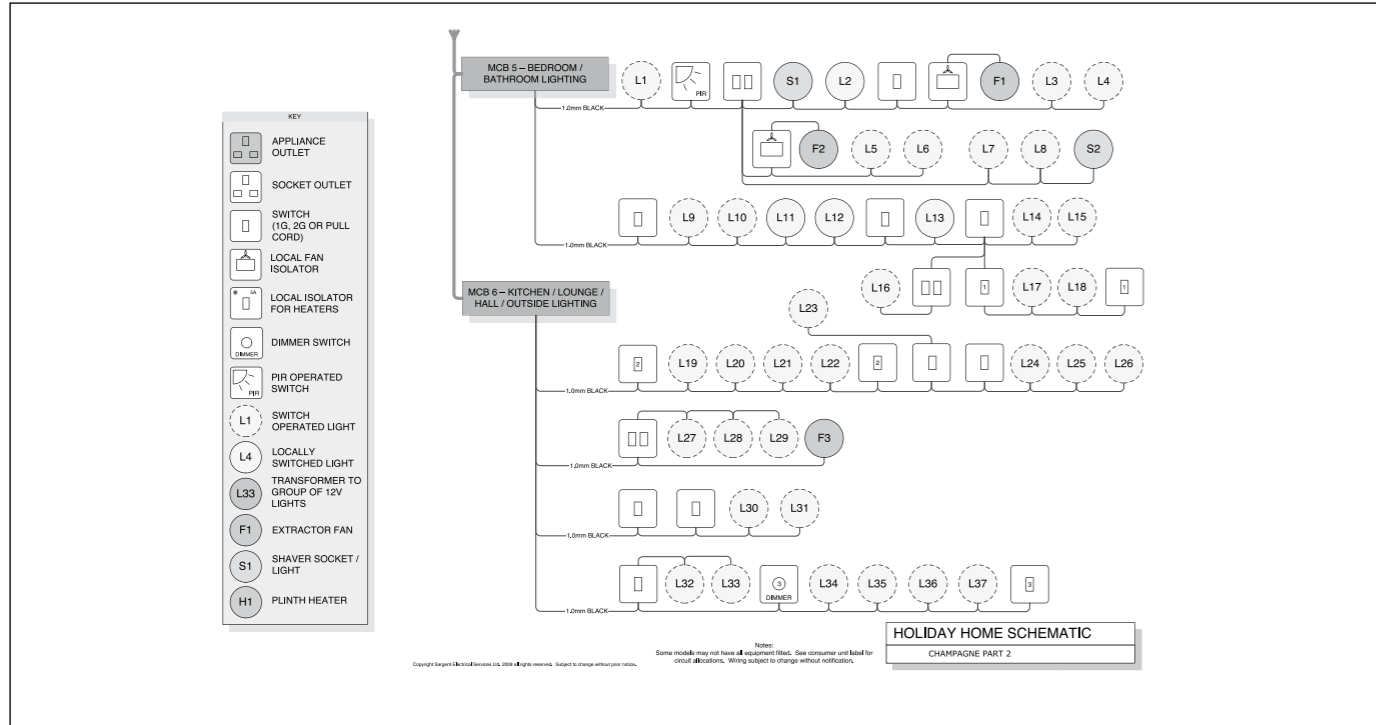
ALL ELECTRIC HEATING



CHAMPAGNE SCHEMATIC



CHAMPAGNE SCHEMATIC



Index

A

- Adjustment of Lockmaster 3
 - Deadlock System 45
- Aftersales support and service 7
- Alignment and adjustment of doors 46
- Appliances 36
- Appliance ventilation 47

B

- Bathroom 50
- Bathroom fittings 52
- Berths and bed sizes 58
- Blockages 40
- Bulbs 25
- Bunks 47

C

- Carbon monoxide alarm 20
- Carbon monoxide - the facts 23
- Carpet 53
- Central heating 30
- Chassis 38
- Chassis specification 13
- Cleaning 52
- Cooker hood 36

D

- Craning 10
- Dishwasher 31, 36
- Door locks 41
- Doors and windows 41, 53

E

- Electrical lounge fire/heater 36
- Electricity 24
- Electrics 48
- Exterior panels 40
- External dimensions 56
- External structure 40

F

- Fault finding 25
- Fire precautions 16
- Fridge/freezer 36
- Furnishings 53
- Furniture 53

G

- Gas 23
- Gas appliances 49
- Gas cylinders 49, 53
- Gas fire 31, 36
- Gas leaks 49
- Gas oven 25, 36
- Gas safety 22
- Gas system 22
- General layout 59
- General safety advice 16
- Grill 25, 36
- Gutters and downpipes 40

H

- Handles 41
- Hinge mounting instructions 43
- Hob 25, 36
- Hot water system 30

I

- Internal walls 47

K

- Kitchen 50, 52

L

- LPG 21, 48

M

- Microwave oven 36
- Model names 58

N

- Night vents 41

O

- Owner's certificate 3

P

- Plumbing (typical heating system) 81
- Plumbing (typical water system) 80

S

- Security 53
- Siting 10
- Smoke alarm 17
- Smoke Alarm Operation 17
- Snow loading 12
- Snow precautions 40
- Surface protection 47

T

- Taps 52
- Toilet/shower room 50

U

- Upholstery care 53

V

- Ventilation 26
- Ventilation and emergency exits 59
- Vinyl flooring 47, 53
- Vitreous enamel 52

W

- Warranty 6
- Winter storage 38
- Wiring 24

Index

