



SWIFT

# ASCARI



LOVE LIFE  
LOVE SWIFT





### **ASCARI**

Want to get away any time of the year? Then the brand new Ascari narrow coachbuilt motorhome could be your ideal answer. Smart, versatile and nimble, enjoy holiday breaks 'on-tap' and re-invigorate your leisure time.

# **CONTENTS**

**PG04** HOME FROM HOME

**PG06** PRACTICALITY

**PG08** STYLE AND COMFORT

**PG10** ASCARI LOOKS

**PG12** FABRIC OPTIONS

**PG14** SMART CONSTRUCTION



CLICK HERE FOR A FULL FEATURE LIST

[www.swiftgroup.co.uk/ascari](http://www.swiftgroup.co.uk/ascari)



### ASCARI COMFORT

- 01.** Two position front seating and two forward facing travelling seats with AL-KO seat belt frame in light and modern Rivera soft furnishing scheme
- 02.** Cream gloss upper locker doors and woodgrain detailing, featuring a graphite strip and concealed handles
- 03.** DAB Radio with Apple™ Carplay/Android Auto™, USB and Bluetooth
- 04.** Lounge seat and bed tops with lift-up storage access (except travelling seats)



CLICK HERE FOR A FULL FEATURE LIST

[www.swiftgroup.co.uk/ascari](http://www.swiftgroup.co.uk/ascari)



### ASCARI PRACTICALITY

- 01.** Dometic CVH1700G 3-burner gas hob with glass lid
- 02.** Dometic 20L Oven/Grill
- 03.** China locker with built-in flatbed microwave oven with digital controls
- 04.** Under counter Dometic (Series 8) 80 litre manual energy selection fridge with 230V, gas and 12V operation
- 05.** Slate Weft laminate kitchen worktop with textured finish
- 06.** Stylish locker construction with Vohringer door in Sangallo Elm, graphite strip and cream gloss lower section and concealed confurn handle
- 07.** Driver and passenger captain chairs both with swivel base, position, height and rake adjustment



CLICK HERE FOR A FULL FEATURE LIST

[www.swiftgroup.co.uk/ascari](http://www.swiftgroup.co.uk/ascari)



03

01



02



04

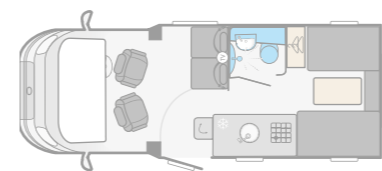
### ASCARI STYLE AND SUBSTANCE

- 01. Exclusive Duvalay Duvalite Alto mattress containing Freshtec – a market leading high spec foam offering maximum airflow for a cool, comfortable good night's sleep on fixed and drop down beds
- 02. Redesigned washroom and shower tray with tip-up fold-away washbasin and separate Vector vanity tap
- 03. Pleated four sided cassette blinds with flyscreens on all windows
- 04. Grey French Oak effect, high impact, scratch resistant floor



CLICK HERE FOR A FULL FEATURE LIST

[www.swiftgroup.co.uk/ascari](http://www.swiftgroup.co.uk/ascari)



**CLICK HERE  
TO CHOOSE  
YOUR LAYOUT**

[swiftgroup.co.uk/ascari/technical](http://swiftgroup.co.uk/ascari/technical)

**01.** Fiat cab in Lanzarote Grey with body coloured bumper for sleek styling

**02.** GRP front low-line pod with opening panoramic sunroof

**03.** Reversing camera with 7" LCD screen rear view mirror

**04.** Ample LED exterior lighting, including high-level brake light, for better visibility

**05.** Bike rack fixing rails fitted to the rear, so you're ready for an adventure

**06.** All models have a MTPLM of 3500kg and can be driven on a normal category B driving license

# 12 FABRIC SCHEME

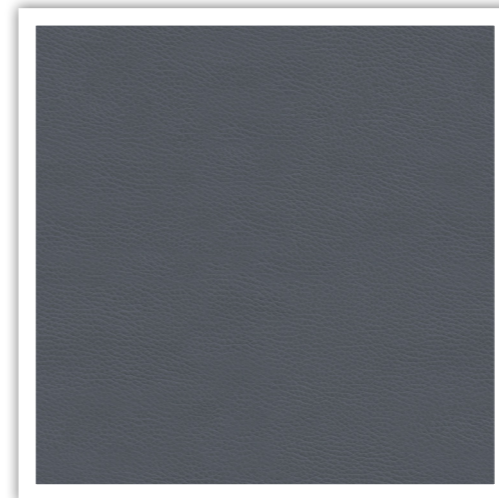


## ASCARI FABRIC SCHEME

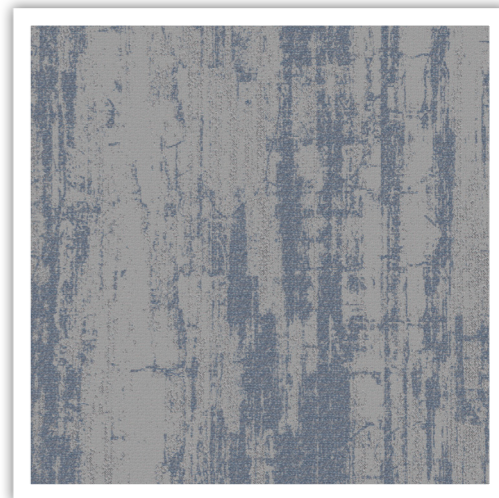
Within the Ascari range, the stunning contemporary Rivera fabric scheme comes as standard.



## SEATING



## CURTAINS/ WALLBOARD





**SMART is the basis of our intelligent construction system, used across our entire motorhome range. Strong, Modern, Aerodynamic, Resilient and Tested, you can be assured your Swift caravan is a high quality engineered product.**



### STRONG

The Strong timberless body frame uses 'PURE', a tough, hard polyurethane based product that is totally impervious to water and has been proven through use.



### MODERN

The SMART construction system uses Modern materials and has been developed to ensure the exterior profiles maintain the Modern desirable looks our motorhomes are renowned for.



### AERODYNAMIC

We continue to lead the way in Aerodynamics using Computational Fluid Dynamics to help shape the bodyshell for better fuel consumption.



### RESILIENT

All fixings are made into the 'PURE' material to a pre-defined depth. 'PURE' is totally impervious to water and has no veins. This means there is no passage for water from the outer skin, making the motorhome highly Resilient to moisture.



### TESTED

Extensive safety and durability Testing at the Millbrook track, and cold chamber Testing down to minus 15°C and beyond, puts prototypes through conditions most products will never have to experience in a lifetime; all part of the Swift ethos to deliver the best products.

### HAIL RESISTANT GRP ROOF

Woven GRP outer surface provides greater durability from the elements.

### GRP SIDEWALLS

Balanced panel side walls with GRP outer and inner skins. GRP is more impact resistant than aluminium and can be easily repaired, ensuring long lasting good looks and helping protect your investment for the future.

### FLOOR CONSTRUCTION

'Sandwich' floor construction with ply upper, high rigidity Styrofoam core and GRP outer skin to provide greater durability from the elements.







# ASCARI



**VIEW & DOWNLOAD YOUR COMPLETE RANGE OF SWIFT BROCHURES HERE:**

[swiftgroup.co.uk/buy/brochures/](https://swiftgroup.co.uk/buy/brochures/)



**FIND YOUR NEAREST DEALER HERE:**

[swiftgroup.co.uk/find-a-dealer/](https://swiftgroup.co.uk/find-a-dealer/)

## DISCLAIMER

This brochure does not constitute an offer by Swift Group Limited (Swift). Swift reserves the right to alter specifications and prices at any time as materials and conditions demand. Distributors and dealers sell Swift products on their own account and not as agents of Swift. Accordingly, they have no authority to bind Swift or to make any representation or undertaking whatsoever on behalf of Swift. All props are for photographic purposes only and are not included in the specification. Models shown may be fitted with optional extras. Issued September 2022.

CARAVANS • MOTORHOMES • HOLIDAY HOMES - MADE IN BRITAIN BY SWIFT

LOVE LIFE  
LOVE SWIFT