

Love
Kon-Tiki



SWIFT
CREATING SMILES FOR LIFE



Love life

LOVE SWIFT

UNDER OUR OWN BLUE SKY

Take me to a place that I call Here,
Hold me in a time that I call This
The air is clean, the light is clear
And now an outdoor kind of bliss
Draws me to a spot I really love;
The door wide open, the kettle on,
A family that fits me like a glove.

A moment's pause for those who've gone
Who still remain in the mind and heart.

And now, under our very own blue sky
The rest of our lives can slowly start
And our spirits can begin to fly
With memories of where we've been,
Those mornings we have yet to know
Those brand new vistas all unseen.
Love life, I say. And now, let's go!

©Ian McMillan 2021

love life
LOVE SWIFT

Contents

PG05 LOVE KON-TIKI - THE EPITOME OF MOTORHOMING

PG06 HIGHLIGHTS

PG12 EXTERIOR STYLE

PG16 FEATURES

PG19 FABRIC OPTIONS

PG20 TECHNICAL SPECIFICATION

PG24 WHERE TO BUY YOUR KON-TIKI





Love
Relaxing

Love
Kon-Tiki



The epitome
of motorhoming



KON-TIKI

At the pinnacle of leisure vehicle luxury stands
Kon-Tiki, Swift's flagship motorhome.

The range has been completely transformed this
season with a striking new exterior and an elegant
interior scheme inspired by business jet aesthetics,
creating the ultimate leisure vehicle experience.





Highlights

Inside Kon-Tiki, it's all about the glamour, with sleek lines, impeccable finishes and atmospheric lighting. A feeling of prestige is evoked throughout by refined touches embodied by a tactile soft furnishing scheme.

This season Kon-Tiki comes with **NEW** Built in Wi-Fi via a boosted 5G/4G/3G signal, which includes a **NEW** 'Smarty' SIM.

- 1** **NEW** indulgent Ultraleather® Brisa soft furnishing scheme designed with ultimate softness and durability, and finished with quilted stitch detailing.
- 2** Decorative Aralie Sen woodgrain detail and **NEW** cream and pearl gloss upper locker doors with dual chrome inlays.
- 3** **NEW** Aguti travelling seats incorporating ISOfix that fold down to create a front parallel lounge.
- 4** Moulded over-cab storage compartments with Skyview opening sunroof.
- 5** Adjustable driver and passenger captains chairs with swivel base. Plus, **NEW** Mapa electric rise and fall table and atmospheric LED lighting.
- 6** Ergonomically contoured seating creates a comfortable front double bed.







1 Redesigned kitchen with **NEW** cream high gloss cabinets, **NEW** Beige Weft laminate worktop with textured finish and **NEW** illuminated splashback.

2 Thetford thermostatic oven and separate grill, plus a three-burner hob, electric hotplate and **NEW** Dometic flatbed microwave.

3 A more spacious and welcoming interior with **NEW** increased head height (2110mm).

4 Dometic (Series 10) 133l or 177l dual hinged fridge with freezer compartment.

5 Exclusive Duvalay Duvalite Apollo Luxe mattress containing Freshtec - a market leading high spec foam offering maximum airflow for a cool, comfortable good night's sleep (fixed beds).

6 Control and monitor onboard systems with the 7" LCD Swift Command touchscreen panel.



1 **NEW** gloss white vanity bowl and marble effect worktop with upper and lower cupboard storage, mirror and vector mixer tap.

2 **NEW** Crema Bianca marble effect wallboard and concrete effect sidewall GRP in dedicated shower cubicle.

3 **NEW** dashboard design with 10" touchscreen HD colour display, incorporating **NEW** DAB radio with Apple Carplay™ /Android Auto™, USB and Bluetooth, and Fiat Sat Nav with 3D map visualisation and selectable vehicle dimensions.

4 **NEW** leather steering wheel with steering wheel controls and gear lever with leather gaiter.

5 Extensive storage including **NEW** rear garage with lighting, heating, sockets and hanging provision, with access doors on both sides.

6 Two pull-out underfloor pannier lockers designed to store utility items.







7

8

1

NEW Euro 6D Final 160bhp, 2.2 litre engine with **NEW** 6-speed manual gearbox.

5

Bike rack fixing rails fitted to rear, so you're ready for an adventure (except 774 & 874).

2

Streamlined aerodynamic profile with **NEW** enhanced exterior graphics scheme plus **NEW** 100W solar panel (two on 874, 884 & 894).

6

Ample LED exterior lighting, including high-level brake light, for better visibility.

3

NEW wide habitation door (600mm) with window, flyscreen, bin, umbrella stand and central locking.

7

Underfloor mounted 90 litre fresh water and 68 litre waste water tanks with level sensors.

4

Twin reversing cameras with 7" LCD screen rear view mirror.

8

NEW Fiat Series 8 chassis cab in black metallic, with body coloured bumper and black grille trim.

SMART CONSTRUCTION



SWIFT
SMART

SMART is the basis of our intelligent construction system, used across our entire coachbuilt motorhome range. Strong, Modern, Aerodynamic, Resilient and Tested, you can be assured your Swift motorhome is a high quality engineered product.



STRONG

The Strong timberless body frame uses PRe, a tough, hard polyurethane based product that is totally impervious to water and has been proven through use.



MODERN

The SMART construction system uses Modern materials, and has been developed to ensure the exterior profiles maintain the Modern, desirable looks our motorhomes are renowned for.



AERODYNAMIC

We continue to lead the way in Aerodynamics, using Computational Fluid Dynamics to help shape the bodyshell for better fuel consumption.



RESILIENT

All fixings are made into the PRe material to a pre-defined depth. PRe is totally impervious to water and has no veins. This means there is no passage for water from the outer skin, making the motorhome highly Resilient against moisture.



TESTED

Extensive safety Testing at the Millbrook track, plus cold chamber Testing down to minus 15°C and beyond, puts prototypes through conditions most products will never have to experience in a lifetime; all part of the Swift ethos to deliver the best products to you.





HAIL RESISTANT GRP ROOF

Woven GRP outer surface provides greater durability from the elements.



GRP SIDEWALLS

Balanced panel side walls with GRP outer and inner skins. GRP is more impact resistant than aluminium and can be easily repaired, ensuring long lasting good looks and helping protect your investment for the future.



'SMART' GRP sidewall during the production process.



FLOOR CONSTRUCTION

'Sandwich' floor construction with ply upper, high rigidity Styrofoam core and GRP outer skin to provide greater durability from the elements.

FEATURES

EXTERIOR & CONSTRUCTION

- European Whole Vehicle Type Approval ensures compliance with strict weight, dimensions and safety regulations
- **NEW** Fiat Series 8 chassis cab in black metallic, with body coloured bumper and black grille trim
- AL-KO low line 4500kg MTPLM chassis conversion with wide rear track (5000kg MTPLM on 874, 884 & 894)
- EN 1646-1 Grade 3 classification for heating and thermal insulation, for sub-zero ambient temperatures, confirmed by cold chamber testing
- **NEW** Euro 6D Final 160bhp, 2.2 litre engine with **NEW** 6-speed manual gearbox with ESC pack and Eco pack
- 90L fuel tank and Ad-Blue based after treatment system with 19L tank
- SMART construction with full GRP bodyshell:
 - Strong, moisture proof 'PURE' Polyurethane timberless framed body shell with HD polystyrene insulation core
 - Balanced panel 31mm sandwich side walls with GRP outer and inner skin
 - 44mm sandwich floor construction, with GRP outer skin, ply upper and high rigidity Styrofoam core
 - 31mm sandwich construction hail resistant exterior GRP roof, fully bonded for extra strength and flatness, and GRP inner skin
 - Full height GRP rear panel
- GRP front low line pod with opening Skyview panoramic sunroof
- White extruded skirts link with full GRP rear panel
- Distinctive streamlined exterior front profile
- **NEW** enhanced exterior graphics scheme coordinated with cab
- Daytime running lights
- Stylish 16" alloy wheels
- Spare wheel on under slung carrier
- Low energy LED lighting
 - Exclusive styled front marker lights
 - Side marker lights
 - **NEW** LED rear light clusters with automotive style swiping rear indicator lights
 - High-level brake light
 - Exterior awning light (two on 874, 884 & 894)
 - Additional offside exterior light
- Full length roll out Thule T4200 Awning
- **NEW** 100W solar panel (two on 874, 884 & 894)
- External 230v socket
- External BBQ point
- External cold water shower point
- **NEW** wide habitation door (600mm) with window, flyscreen, bin, umbrella stand and central locking
- **NEW** rear garage with Metallic Grey Chequer lino, lighting, heating, sockets and hanging provision, with access doors on both sides
- Exterior access locker door in to bed box (764, 774 & 874)
- **NEW** two pull-out underfloor pannier lockers for water hose and electric cable reels (not included)
- Provision for 1 x 6kg and 1 x 13kg gas bottles with fitted butane/ propane regulator and propane hose
- Flush fitting, double glazed, tinted acrylic windows with night latch ventilation
- Twin reversing cameras with 7" LCD screen rear view mirror
- Heavy duty rear chassis members ready for optional towbar
- Bike rack fixing rails fitted to the rear (except 774 & 874)

DRIVING

- **NEW** dashboard design with silver trim including:
 - **NEW** 10" touchscreen HD colour display
 - **NEW** leather steering wheel with steering wheel controls including volume control and phone compatibility
 - **NEW** gear lever with leather gaiter
 - **NEW** full digital cluster with 7" information display or for navigation maps
 - **NEW** cab light & back lighting
 - **NEW** Fiat Sat Nav with 3D map visualisation and selectable vehicle dimensions
 - **NEW** DAB radio with Apple Carplay™ / Android Auto™, USB and Bluetooth
 - **NEW** central area with pocket for smartphone, double USB socket and cup holders
 - **NEW** door pockets with bottle holder
 - Cruise control
 - Driver and passenger airbags
 - **NEW** automatic cab air-conditioning
- ABS brakes
- EBD (electronic brake force distribution)
- Immobiliser with rolling code
- Variable power steering
- Electrically adjusted and heated wing mirrors fitted with direction indicators and DAB radio aerial
- Electrically operated and tinted cab windows
- Adjustable headlamp height
- Adjustable steering wheel position
- Concertina cab blinds (windscreen and side blinds)
- Removable and bleachable cab carpet
- Driver and passenger captain chairs both with:
 - Position, height and rake adjustment
 - Swivel base
 - Two armrests
 - Integrated headrest
 - Fully upholstered covers
 - Seat base surrounds
- Central dash mounted holder for full width tablet

LIVING, RELAXING & SLEEPING

- **NEW** Ultraleather® Brisa soft furnishing scheme with complementary scatter cushions which has been thoroughly tested to ensure it is easy to clean
- Decorative Aralie Sen woodgrain detail with **NEW** complementary Toro Tela and Grau furniture
- **NEW** Cream/Pearl gloss upper locker doors with dual chrome inlays
- French Oak effect, high impact, scratch resistant floor lino
- Sectioned removable and bleachable carpets for flexibility
- Removable stepwell mat
- **NEW** entrance doorway feature panel with illuminated grab handle
- Front parallel lounge with **NEW** fold-down Aguti travelling seats incorporating ISOfix (2 x Aguti seats on offside on 774 & 874)
- Lap and diagonal seat belts on all designated passenger seats
- Ergonomically contoured bedding for increased comfort, wrapped in Ultraleather® Brisa, a high performance fabric meticulously designed with ultimate softness and durability, and finished with quilted stitch detailing
- Seat backrest ventilation boards
- Lounge bench seat cushions and bed mattresses supported by beech slats for extra comfort
- Exclusive Duvalay Duvalite Apollo Luxe mattress containing Freshtec – a market leading high spec foam offering maximum airflow for a cool, comfortable good night's sleep (fixed beds and drop down beds)
- **NEW** rise and fall rear island bed to provide greater storage when travelling (794 & 894)

- **NEW** wider height adjustable electric drop-down bed over front lounge (774 & 874)
- Pleated cassette blinds with flyscreens on all windows
- Easy action concertina door flyscreen
- Decorative blind and flyscreen surrounds
- Midi-Heki rooflight with flynet and adjustable blinds in bedrooms
- **NEW** Built in Wi-Fi via boosted 5G/4G/3G signal, includes 'Smarty' SIM
- Black branded speakers (model specific)
- **NEW** increased head height (2110mm)

EATING

- Thetford thermostatic oven and separate grill, plus a dual fuel 3-burner hob with 1x 800W electric hotplate, all with electric ignition. Hob features a glass lid with automatic gas shut-off functionality
- **NEW** Dometic built-in flatbed microwave with digital controls
- Dometic (Series 10) 133 litre, tall slimline, dual hinged, automatic energy selection fridge with 230V, gas and 12V operation incorporating 12 litre removable freezer compartment (764, 774, 784 & 794)
- Dometic (Series 10) 177 litre, dual hinged automatic energy selection fridge/freezer with 230V, gas and 12V operation incorporating 35 litre freezer compartment (874, 884 & 894)
- Thule Omnivent in kitchen/washroom area
- **NEW** Cream high gloss kitchen cabinets
- **NEW** Beige Weft laminate kitchen worktop with textured finish and black edging with durable underslung stainless steel sink
- L-Shaped sink unit with foldaway kitchen worktop extension
- **NEW** Karina kitchen mixer tap
- **NEW** illuminated printed acrylic splashback
- Removable drainer and food grade nylon chopping board nestle together for easy storage in dedicated location
- **NEW** Mapa electric rise and fall table
- **NEW** pull-out occasional table in rear lounge (774 & 874)

WASHING

- **NEW** washroom design with vanity unit, sink, toilet and separate shower
- Dedicated shower cubicle with shower mixer tap, riser bar, soap dish and integrated storage shelf for toiletries
- **NEW** quadrant shower lighting
- Ecocamel Jetstorm shower head with on/off button for a powerful shower that uses less water
- **NEW** Crema Bianca marble effect wallboard and concrete effect sidewall GRP in shower with Tournai Stone floor vinyl on raised floor in vanity area
- **NEW** gloss white vanity bowl and marble effect worktop with upper and lower cupboard storage, mirror and vector mixer tap
- Thetford C260 swivel cassette toilet with electric flush and 18 litre wheeled tank
- Washroom radiator (model specific)
- **NEW** fold-down shower garment rail
- Micro-Heki skylight with flyscreen in washroom
- 32mm thick entrance door with decorative inlay, domestic style mortice lock and handle

STORAGE

- Positive overhead locker catches for secure storage on the move with chrome handles
- Lounge seat and bed tops spring assisted for easy storage access (except travelling seats)
- Moulded over-cab storage compartments with Skyview opening sunroof
- Pull-out kitchen storage baskets (874, 884 & 894)

UTILITIES

- Exclusive Swift Command control system with large 7" LCD colour touchscreen panel with improved user interface and functionality featuring;
 - Simple controls for monitoring and managing:
 - Power
 - Battery selection, battery level meter and power usage
 - 230V AC load limiter (settable between 5 amps & 16 amps)
 - Solar panel charging levels (where fitted)
 - Heating control of Alde system
 - Environment monitoring with internal and external temperature and internal humidity levels
 - Lighting control
 - Water system controls, tank levels and control of tank drain valves
 - Air-conditioning compatible with Dometic and Truma (dealer fit option, model specific)
 - Fridge control via CI-BUS connection
 - Pre-installed Swift Command Tracker, a Thatcham Category S7 approved

proactive tracker (subject to annual subscription)

- Swift Command app enabling you to manage and monitor key vehicle functions from your mobile device including power, heating and selected lighting:
 - Incorporates a simpler connectivity selection:
 - Bluetooth connectivity when with the vehicle
 - Wi-Fi / GSM connectivity when away from the vehicle (subject to network coverage)
- Includes the useful 'Places of Interest' feature including 'Campsites' from the Camping & Caravanning Club and Swift dealership locations
- Alde dual fuel radiator central heating and water heating with daily programming,
- LCD control panel with 1kW, 2kW or 3kW settings
- Alde circulation pump with 5 speed settings
- Zonal control of Alde heating
- Truma 'Crash Sensor Duo' regulator for en-route use of heating and water heating
- Pressurised fresh water system with self-priming pump and accumulator
- 12V exterior power point for pump filling of water tank (pump not supplied)
- 90 litre underfloor mounted fresh water tank with level sensor
- 68 litre underfloor mounted waste water tank with level sensor
- Electronically operated drain valves on fresh and waste water tanks
- Winter Pack with waste water tank heater with en-route heating to keep defrosted, insulated drain valve covers and fridge vent covers
- Fully sealed, long life, 100 Amp-hour (Dir 2006/66/EC) leisure battery (two on 874, 884 & 894)
- Mains 230V supply via easy-access consumer unit to sockets, fridge, microwave oven, boiler and battery charger/transformer
- 25 metre mains hook-up cable
- 25 Amp/300W charger/transformer for leisure batteries
- Ultra-low energy LED lighting system:
 - Spotlights with USB sockets
 - Over-locker ambient lighting
 - Illuminated lower locker profile
 - Adjustable cab reading lights
 - Wardrobe light
 - Low-level night lights
 - Dimmable interior lights
- Minimum of eight 230V chrome sockets (including two in cab area and one in the garage)
- Dedicated USB points
- USB socket for rear passenger seats
- Status 570 TV aerial
- TV points with 230V and 12V sockets and aerial socket

SAFETY & SECURITY

- VIN CHIP™ identification system concealed within construction to deter theft and aid quick recovery
- Single key for all habitation doors
- Key fob operated remote central locking of cab doors and entrance door
- Smoke alarm
- Carbon monoxide alarm

CUSTOMER SERVICE

- 10 year manufacturer-backed bodysell warranty

OPTIONS

Factory Fit

- Upgrade to 160bhp, 2.2 litre engine with 9-speed full automatic transmission
- Upgrade to 180bhp, 2.2 litre engine with 6-speed manual transmission
- Upgrade to 180bhp, 2.2 litre engine with 9-speed full automatic transmission
- Detachable homologated tow bar and electrics

Dealer Fit

- Annual subscription to Swift Command Tracker by Sargent
- Thule rail mounted rear cycle rack (except 774/874)*

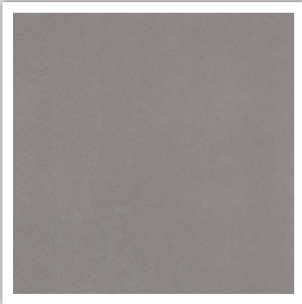
* Dependent on model, visibility through rear camera may be reduced when bicycles are carried on the optional bike carrier



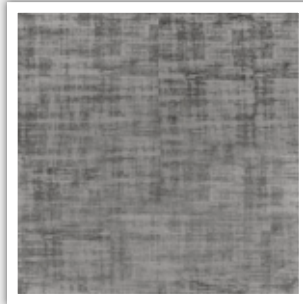
FABRIC OPTIONS

Within the Kon-Tiki range, the Ultraleather® Brisa soft furnishing scheme comes as standard.

SEATING

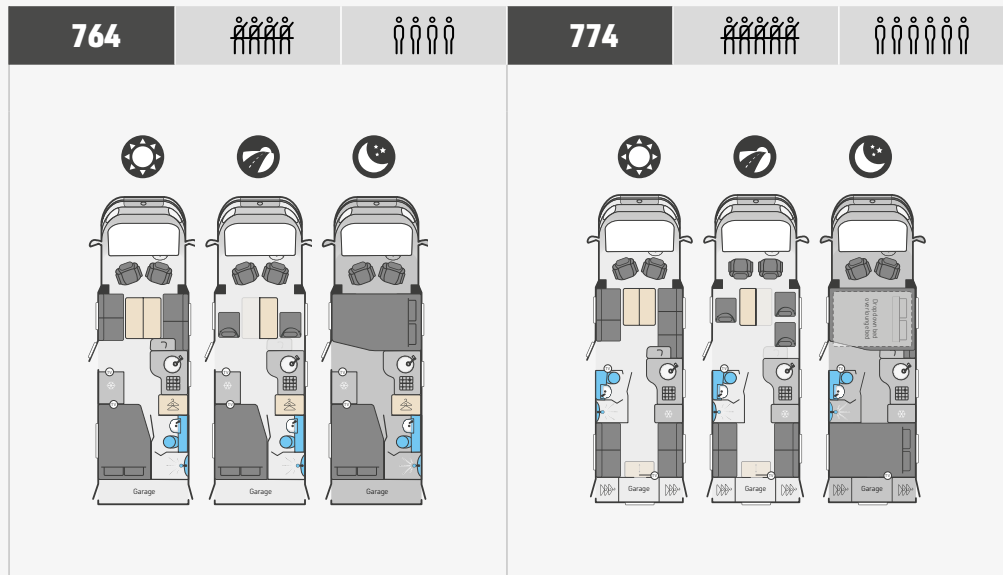


WALLBOARD

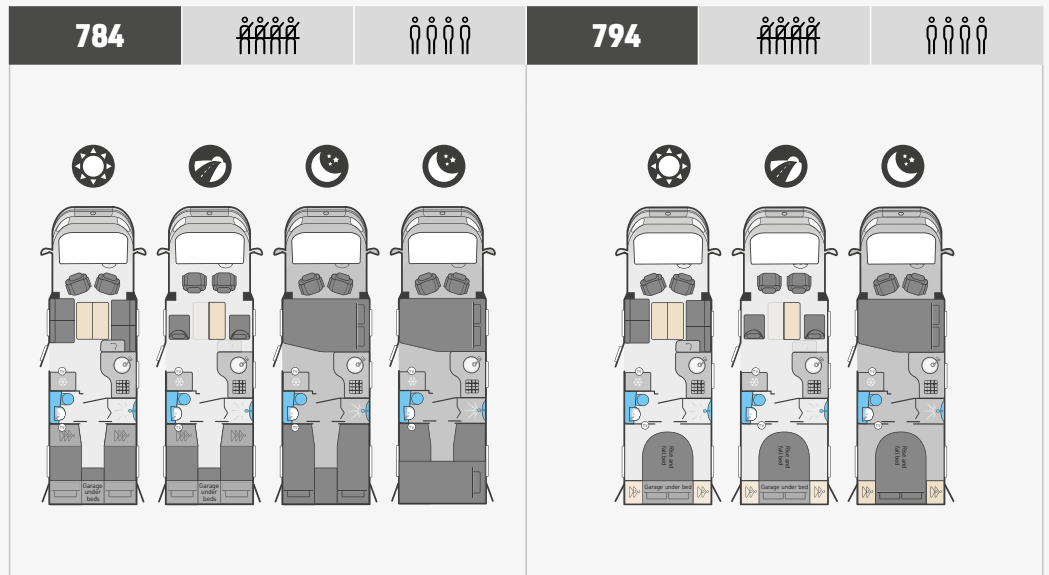


CUSHION

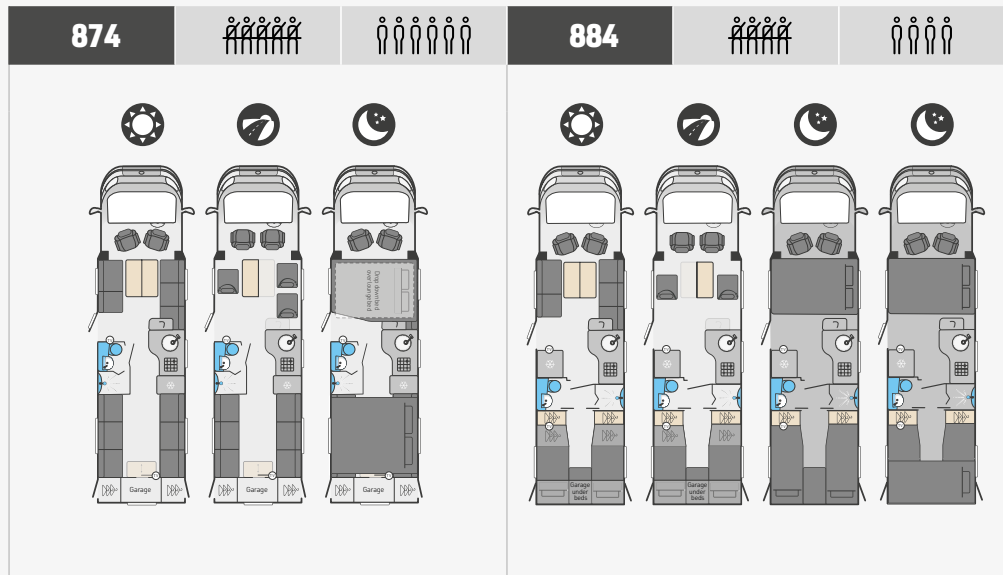




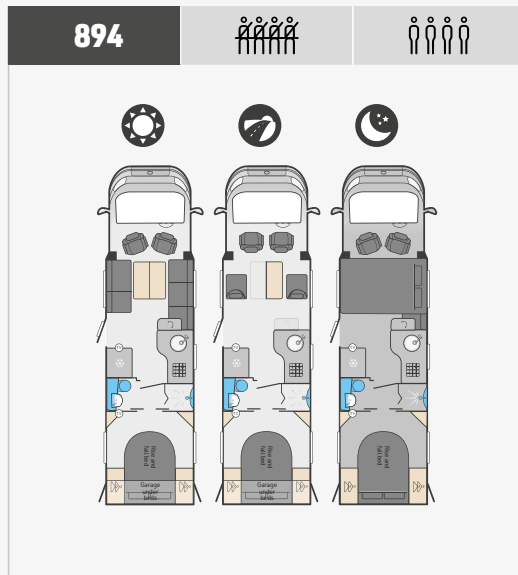
	Standard	Optional	Optional	Optional	Standard	Optional	Optional	Optional
Fiat MultiJet diesel engine	160	160 Auto	180	180 Auto	160	160 Auto	180	180 Auto
Engine capacity	2.2ltr				2.2ltr			
Engine power	160 HP @ 3500rpm		180 HP @ 3500rpm		160 HP @ 3500rpm		180 HP @ 3500rpm	
Engine torque	380 Nm @ 1500rpm	400 Nm @ 1500rpm	380 Nm @ 1500rpm	450 Nm @ 1500rpm	380 Nm @ 1500rpm	400 Nm @ 1500rpm	380 Nm @ 1500rpm	450 Nm @ 1500rpm
Wheel base	4.30m / 14'1"				4.70m / 15'5"			
Seat belts (inc. driver)	4				5			
Berths (sleeping positions)	4				6			
Overall length	7.84m / 25'9"				8.22m / 27'0"			
Overall body width (mirrors folded)	2.38m / 7'10"				2.38m / 7'10"			
Overall height	2.89m / 9'6"				2.87m / 9'5"			
Standard awning	Thule 4200 4.5m				Thule 4200 4.5m			
Maximum technical permissible laden mass (A)	4500kg				4500kg			
Mass in running order (B)	3397kg	3415kg	3397kg	3415kg	3617kg Est	3635kg Est	3617kg Est	3635kg Est
Maximum user payload (A-B)	1103kg	1085kg	1103kg	1085kg	883kg	865kg	883kg	865kg
Thermal insulation grade	THREE				THREE			
Recommended maximum trailer weight	2000kg#				2000kg#			
Gross train weight	6000kg#				6000kg#			
BED SIZES								
Front double	194cm x 133cm / 106cm / 6'4" x 4'4" / 3'6"				194cm x 136cm / 6'4" x 4'6"			
Rear double	188cm x 129cm / 6'2" x 4'3"				203cm x 132cm / 6'8" x 4'4"			
Rear transverse single								
Rear nearside single								
Rear offside single								
Overcab bed					189cm x 150cm / 6'2" x 4'11"			



	Standard	Optional	Optional	Optional	Standard	Optional	Optional	Optional
Fiat MultiJet diesel engine	160	160 Auto	180	180 Auto	160	160 Auto	180	180 Auto
Engine capacity	2.2ltr				2.2ltr			
Engine power	160 HP @ 3500rpm		180 HP @ 3500rpm		160 HP @ 3500rpm		180 HP @ 3500rpm	
Engine torque	380 Nm @ 1500rpm	400 Nm @ 1500rpm	380 Nm @ 1500rpm	450 Nm @ 1500rpm	380 Nm @ 1500rpm	400 Nm @ 1500rpm	380 Nm @ 1500rpm	450 Nm @ 1500rpm
Wheel base	4.70m / 15'5"				4.70m / 15'5"			
Seat belts (inc. driver)	4				4			
Berths (sleeping positions)	4				4			
Overall length	7.84m / 25'9"				7.84m / 25'9"			
Overall body width (mirrors folded)	2.38m / 7'10"				2.38m / 7'10"			
Overall height	2.89m / 9'6"				2.89m / 9'6"			
Standard awning	Thule 4200 4.5m				Thule 4200 4.5m			
Maximum technical permissible laden mass (A)	4500kg				4500kg			
Mass in running order (B)	3440kg Est	3458kg Est	3440kg Est	3458kg Est	3477kg	3495kg	3477kg	3495kg
Maximum user payload (A-B)	1060kg	1042kg	1060kg	1042kg	1023kg	1005kg	1023kg	1005kg
Thermal insulation grade	THREE				THREE			
Recommended maximum trailer weight	2000kg#				2000kg#			
Gross train weight	6000kg#				6000kg#			
BED SIZES								
Front double	194cm x 133cm / 106cm / 6'4" x 4'4" / 3'6"				194cm x 133cm / 106cm / 6'4" x 4'4" / 3'6"			
Rear double					180cm x 143cm / 5'11" x 4'8"			
Rear transverse single	206cm x 115cm / 6'9" x 3'9"							
Rear nearside single	195cm x 78cm / 6'5" x 2'7"							
Rear offside single	195cm x 78cm / 6'5" x 2'7"							
Overcab bed								



	Standard	Optional	Optional	Optional	Standard	Optional	Optional	Optional
Fiat MultiJet diesel engine	160	160 Auto	180	180 Auto	160	160 Auto	180	180 Auto
Engine capacity	2.2ltr				2.2ltr			
Engine power	160 HP @ 3500rpm		180 HP @ 3500rpm		160 HP @ 3500rpm		180 HP @ 3500rpm	
Engine torque	380 Nm @ 1500rpm	400 Nm @ 1500rpm	380 Nm @ 1500rpm	450 Nm @ 1500rpm	380 Nm @ 1500rpm	400 Nm @ 1500rpm	380 Nm @ 1500rpm	450 Nm @ 1500rpm
Wheel base	4.70m / 15'5"				4.70m / 15'5"			
Seat belts (inc. driver)	5				4			
Berths (sleeping positions)	6				4			
Overall length	8.96m / 29'5" Est				8.96m / 29'5" Est			
Overall body width (mirrors folded)	2.38m / 7'10"				2.38m / 7'10"			
Overall height	2.91m / 9'6" Est				2.92m / 9'7" Est			
Standard awning	Thule 4200 4.5m				Thule 4200 4.5m			
Maximum technical permissible laden mass (A)	5000kg				5000kg			
Mass in running order (B)	3942kg Est	3960kg Est	3942kg Est	3960kg Est	3765kg Est	3783kg Est	3765kg Est	3783kg Est
Maximum user payload (A-B)	1058kg	1040kg	1058kg	1040kg	1115kg	1097kg	1115kg	1097kg
Thermal insulation grade	THREE				THREE			
Recommended maximum trailer weight	2000kg#				2000kg#			
Gross train weight	6000kg#				6000kg#			
BED SIZES								
Front double	194cm x 150cm / 6'4" x 4'11" / 4'6"				194cm x 186cm / 150cm / 6'4" x 6'1" / 4'11"			
Rear double	203cm x 183cm / 6'8" x 6'0"							
Rear transverse single					206cm x 115cm / 6'9" x 3'9"			
Rear nearside single					195cm x 78cm / 6'5" x 2'7"			
Rear offside single					195cm x 78cm / 6'5" x 2'7"			
Overcab bed	189cm x 150cm / 6'2" x 4'11"							



	Standard	Optional	Optional	Optional
Fiat MultiJet diesel engine	160	160 Auto	180	180 Auto
Engine capacity	2.2ltr			
Engine power	160 HP @ 3500rpm		180 HP @ 3500rpm	
Engine torque	380 Nm @ 1500rpm	400 Nm @ 1500rpm	380 Nm @ 1500rpm	450 Nm @ 1500rpm
Wheel base	4.70m / 15'5"			
Seat belts (inc. driver)	4			
Berths (sleeping positions)	4			
Overall length	8.96m / 29'5" Est			
Overall body width (mirrors folded)	2.38m / 7'10"			
Overall height	2.92m / 9'7" Est			
Standard awning	Thule 4200 4.5m			
Maximum technical permissible laden mass (A)	5000kg			
Mass in running order (B)	3802kg Est	3820kg Est	3802kg Est	3820kg Est
Maximum user payload (A-B)	1105kg	1087kg	1105kg	1087kg
Thermal insulation grade	THREE			
Recommended maximum trailer weight	2000kg#			
Gross train weight	6000kg#			
BED SIZES				
Front double	194cm x 186cm / 150cm / 6'4" x 6'1" / 4'11"			
Rear double	195cm x 143cm / 6'5" x 4'8"			
Rear transverse single				
Rear nearside single				
Rear offside single				
Overcab bed				

GENERAL TECHNICAL NOTES

1. The Maximum User Payload includes:

- The conventional load (this is the allowance for passengers)
- Essential habitation equipment (items and fluids required for safe and proper functioning of habitation equipment)
- Optional equipment (items available from the manufacturer over and above the standard specification)
- Personal effects (those items not covered by the above)

2. The Mass in Running Order is the mass of the unladen vehicle including a 75kg allowance for the driver plus engine coolants and 90% of the fuel tank capacity and 1 x 6kg Calor Lite LPG cylinder. The MRO is calculated with the fresh water tank empty. If you travel with water in the fresh water tank then the payload will reduce accordingly.

3. Please take care to ensure that you have allowed for the masses of all items you intend to carry in the motorhome, e.g. passengers, optional equipment, essential habitation equipment and personal effects, such as clothing, food, pets, bicycles, sailboards, sports equipment etc.

4. Warning - under no circumstances should the maximum technical permissible laden mass of this motorhome be exceeded.

The maximum trailer weight is limited by the gross train weight which must not be exceeded. For example if the vehicle is at the maximum MTPLM of 4500kg, then the maximum trailer weight possible is 1500kg. Reducing the weight of the vehicle by removing payload, will allow you to increase the trailer weight up to a maximum of 2000kg.

ENGLAND - NORTH WEST

- 01. **Todds Motorhome Specialists**, Preston
toddsmotorhomes.co.uk
- 02. **Preston Caravans & Motorhomes**,
prestoncm.co.uk
- 03. **Lowe & Rhodes**, Stoke-on-Trent
loweandrhodes.co.uk

ENGLAND - NORTH EAST

- 04. **Kimberley Darlington**
kimberleycaravans.co.uk

ENGLAND - YORKSHIRE

- 05. **Wandahome**, South Cave
caravanbuys.com
- 06. **Ebor Leisure World Group**
leisureworldgroup.com
- 07. **BnB Motorhomes**, Keighley
bnbmotorhomes.co.uk

ENGLAND - WEST MIDLANDS

- 08. **South Hereford Motorcaravan Centre**
motorcaravancentre.co.uk
- 09. **Salop Leisure**, Shrewsbury
salopleisure.co.uk
- 10. **Broad Lane Leisure**, Alcester
broadlane.co.uk
- 11. **Broad Lane Leisure**, Kenilworth
broadlane.co.uk

ENGLAND - EAST MIDLANDS

- 12. **Timberland Motorhomes**, Chesterfield
timberlandmotorhomes.com
- 13. **Camper UK**, Lincoln
camperuk.co.uk
- 14. **Glossop Caravans**, Glossop
glossopcaravans.co.uk
- 15. **Brownhills Motorhomes**, Newark
brownhills.co.uk
- 16. **Lowdham Leisureworld**, Nottingham
lowdhams.com

ENGLAND - SOUTH WEST

- 17. **Alan Kerr Ltd**, Paignton
alankerr.co.uk
- 18. **Highbridge Caravan Centre**, Highbridge
highbridgecaravans.co.uk
- 19. **West Country Motorhomes**, Brent Knoll
westcountrymotorhomes.co.uk
- 20. **West Country Motorhomes**, Swindon
westcountrymotorhomes.co.uk
- 21. **Chelston Motorhomes**, Wellington
chelstononline.co.uk

ENGLAND - SOUTH EAST

- 22. **Downtide Caravans & Leisure**, Norwich
downtide.com
- 23. **Stewart Mouland Motorcaravans**,
stewartmouland.co.uk

SCOTLAND

- 24. **Knowepark Caravans & Motorhomes**,
Livingston
kpcm.co.uk
- 25. **Perthshire Caravans**, Errol
perthshire-caravans.co.uk

WALES

- 26. **3As Caravan Co**, Carmarthen
3acaravans.co.uk
- 27. **Spinney Flintshire**, Deeside
spinney.co.uk

NORTHERN IRELAND

- 28. **Thompson Leisure**, Dromore
thompsonleisure.com

Make your staycation a

safe-cation

*Where
to buy*





SWIFT
CREATING SMILES FOR LIFE

VIEW & DOWNLOAD
YOUR COMPLETE RANGE
OF SWIFT BROCHURES HERE
swiftgroup.co.uk/downloads

OR SCAN THE QR CODE



SCAN FOR MORE

swiftgroup.co.uk

DISCLAIMER

This brochure does not constitute an offer by Swift Group Limited (Swift). Swift reserves the right to alter specifications and prices at any time as materials and conditions demand. Distributors and dealers sell Swift products on their own account and not as agents of Swift. Accordingly, they have no authority to bind Swift or to make any representation or undertaking whatsoever on behalf of Swift. All props are for photographic purposes only and are not included in the specification. Models shown may be fitted with optional extras. Issued November 2021.

CARAVANS • MOTORHOMES • HOLIDAY HOMES - MADE IN BRITAIN BY SWIFT

