



SWIFT

SWIFT GROUP QUICK START GUIDE

MOTORHOMES



CONTENTS

| | |
|---|----|
| Power up motorhome | 3 |
| Prime the cold water system | 4 |
| Connect gas to motorhome | 5 |
| Operate fridge | 6 |
| Operate Truma Combi boiler | 7 |
| Operate Alde central heating system | 9 |
| Operate Whale space heater | 12 |
| Operate Whale water heater | 15 |

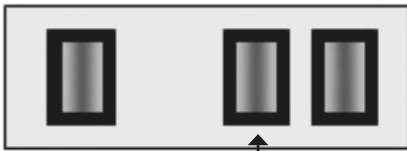
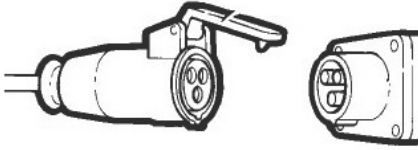
NB. If after following any of the steps in this guide a problem occurs, please first consult your main handbook for further information, and if problems still persist contact your supplying dealer.

The main motorhome owners handbook can be found on the Swift Group website:

www.swiftgroup.co.uk/owners/handbooks



POWER UP MOTORHOME



Charger

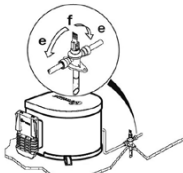


HEATING/
HOT WATER

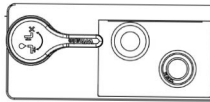


1. Plug 230v supply into motorhome then into site supply (if appropriate).
2. Press Black isolator button on front of power supply unit to turn system on.
3. Press green button on power supply unit to switch on charger.
4. Press Yellow button on power supply unit to switch on 230v supply to heating system.
5. Press power button on control panel (above entrance door).

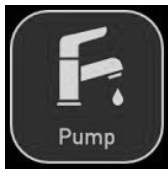
PRIME THE COLD WATER SYSTEM



WHALE



NOTE: Truma appliance shown.



1. Ensure the drain valve is closed, or bung is in place, at the fresh water tank so it can hold water. Then, locate and open the fresh water tank filling cap on the body side, and use a food grade hose to fill the fresh water tank. To check the valve/bung:

For Carrera, Ascari and Escape models locate the tank valve control switches in an upper locker. Ensure they are in the closed position. (Amber is valve open, Green is closed and ready for use).

For Voyager models, ensure the manual drain taps are in the closed position. These are the blue (fresh) and grey (waste) taps found externally below the skirt

For Kon Tiki, valves mounted near the skirt are normally closed. On the control panel above the door, it is possible to check this: The 'empty fresh' and 'empty waste' buttons will be flashing if the valve is open, and will not flash if the valve is closed.

2. Locate safety/drain valve close to Alde or Truma water heater, or on Whale water heater.

For Alde or Truma appliances ensure handle is in horizontal position (e).

For Whale water heater ensure drain valve is rotated 90deg anti-clockwise to the closed position.

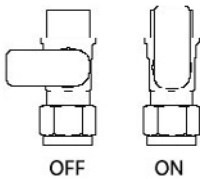
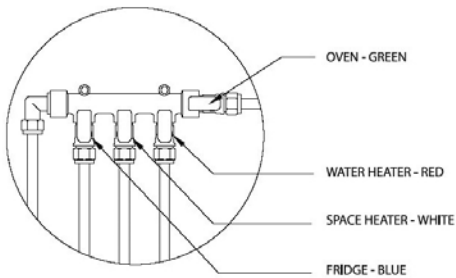
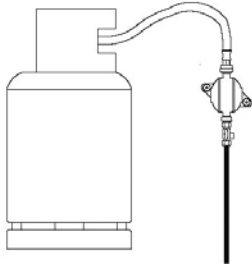
Close all taps except kitchen sink tap, which should be set to 'hot' and 'open' position.

3. Press pump button on control panel, and wait until water is flowing from kitchen tap. (this may take a few minutes).

4. Set kitchen tap to 'cold' and again wait, until water is flowing cleanly.

At vanity and shower taps / mixers, open to hot and then to cold until again water is flowing cleanly at each outlet.

CONNECT GAS TO MOTORHOME



1. Position the gas bottle and tighten the securing straps, then fix hose to regulator, and tighten using spanner. Fix other end of hose to gas bottle, again tightening using spanner.

Turn valve on top of gas bottle to turn on gas supply, and if regulator is 'Crash Sensor', follow steps described on Yellow label close to regulator to re-set safety features.

2. Locate gas isolation valves, which may be assembled onto a manifold or be in the format of a separate tap fitted close to an appliance.

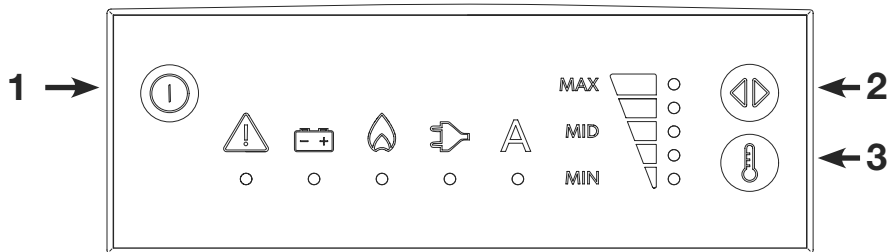
NOTE: There may be multiple manifolds in the vehicle

3. Turn each tap to the 'ON' position

4. Move to hob/oven. Open glass lid fully. Press igniter on hob, turn one burner control to 'ON' position, and depress that control. After a short while burner should light.

Gas should now be available at all appliances.

OPERATE FRIDGE




This guide details basic settings only, for further details, please see main handbook and links to external sources for further information.

TURN ON


Press the power button (1) for approx. one second to switch on the fridge. Pressing and holding the button (1) for approx. one second again, will switch off the fridge.

Choose energy source.

Press button (2) to move between the energy source choices. From left to right these are:

 12v (from towing vehicle)

 Gas

 230v (mains hook up)

 Automatic selection of available source

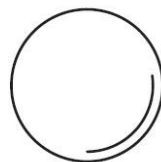
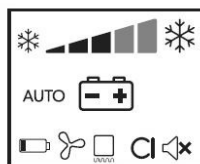
An LED will illuminate below the corresponding symbol to confirm the chosen energy source.

Choose temperature:

Press button (3) to choose a temperature. With all indicators illuminated, maximum cooling will occur.

After a short time the fridge will begin to operate. If a problem occurs (for instance no gas when gas energy source is selected), then the LED below the warning symbol will illuminate. Please note; allow the refrigerator to run for at least two hours, or ideally run the refrigerator over night, to cool to a suitable temperature for storage of food.

Compressor Fridge (Carrera)



To turn the fridge ON

- Press and hold the rotary control for 2 seconds.
- The fridge will start with the last used / previous settings.

To change settings such as temperature press the rotary control briefly, and then rotate the control to move through the options. Once the setting is highlighted, a further press and rotation of the control adjusts the setting - see the full instructions for further details.

Please note a long press of the rotary control (4 seconds) will turn the fridge OFF.

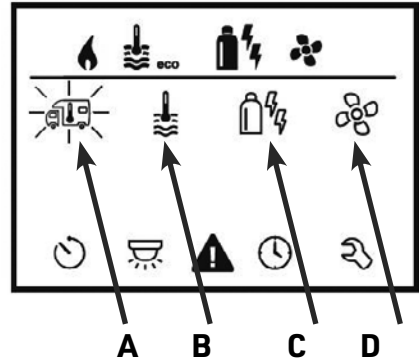
OPERATE TRUMA COMBI BOILER



The Truma Combi dual purpose boiler can be used for:

- Water heating using gas or mains electricity as an energy source.
- Space heating using gas or mains electricity as an energy source, with or without water in the system. (If space heating is used with water in the system, then the water will also be heated to an unspecified temperature).

This guide details basic settings only, for further details, and use of use of the Swift Command system (when fitted) to control heating, please see main handbook and links to external sources for further information.



Turn heating system ON:

Press and hold the rotary control (8) for 3 seconds to turn the system ON – the display will alternate between time and temperature displays. Press the rotary control (8) to adjust settings – the display will then show the symbols row (3).

Pressing and holding the rotary control (8) will also switch the heating system OFF.

Choose required room temperature:

Rotate the control (8) until the vehicle symbol (A) is flashing, then press the rotary control (8) to allow adjustment of room temperature. Rotate the control (8) to select the preferred room temperature, or rotate anti-clockwise to 'OFF' if room heating is not required. Press the rotary control (8) to confirm this selection.

Choose water heating settings:

Rotate the control (8) until the thermometer symbol (B) is flashing, then press the rotary control (8) to allow adjustment of water heating settings. Turn the rotary control (8) to select either Eco, Hot or Boost, or rotate anti-clockwise to 'OFF' if room heating is the priority, and water heating is not important. Press the rotary control to confirm the selection.

OPERATE TRUMA COMBI BOILER



Choose water heating settings:

Rotate the control (8) until the thermometer symbol (B) is flashing, then press the rotary control (8) to allow adjustment of water heating settings. Turn the rotary control (8) to select either Eco, Hot or Boost, or rotate anti-clockwise to 'OFF' if room heating is the priority, and water heating is not important. Press the rotary control to confirm the selection.

Choose energy source:

Turn the rotary control (8) until the energy symbol (C) is flashing, then press the rotary control (8) to allow the adjustment of energy selection.

Turn the rotary control (8) to select one of the available choices, then press the rotary control to confirm. Choices are:

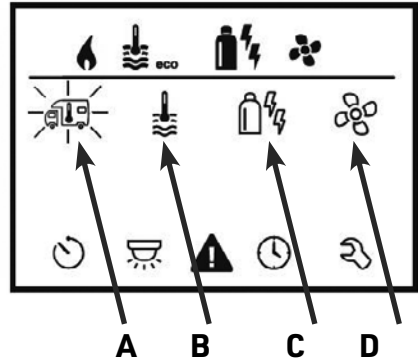
GAS (gas only)

EL1 (0.9kw electric element)

EL2 (1.8kw electric element)

MIX 1 (Gas + 0.9kw electric element)

MIX 2 (Gas + 1.8kw electric element)



Choose fan settings:

Turn the rotary control (8) until the fan symbol (D) is flashing, then press the rotary control (8) to allow the adjustment of fan settings. Turn the rotary control (8) to choose from one of the available options, then press the rotary control (8) to confirm. Choices are:

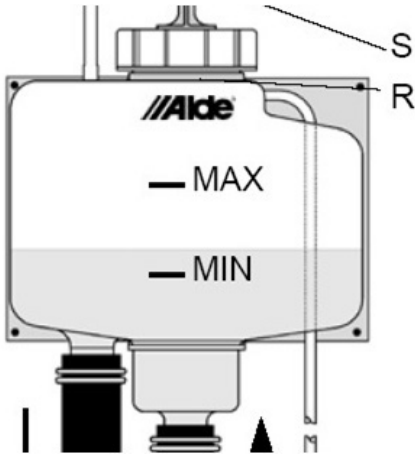
OFF - No fan operation required. Only possible when no room temperature is selected.

Vent - Fan operates to circulate cold air only. Only possible when appliance is cold (No water or space heating)

Eco/High - Fan limited to either low (Eco) or high speed. Actual fan speed will vary according to heating system requirements.

Boost - Maximum fan operation. Only possible when there is a large difference between room temperature and preferred room temperature.

OPERATE ALDE CENTRAL HEATING SYSTEM



The Alde 3030HE central heating system can provide hot water and room heating, from gas and/ or mains (230v) electric energy sources. The room heating can be used with or without water in the heater - if water is present, then the water will also be heated to an unspecified temperature..

Before using the central heating system check that the level of 'glycol' fluid which is used to heat the radiators, is between the min and max levels on the header tank.

The Alde control panel is located near the entrance door, and is used to select energy source and water / room heating operations. This guide details basic settings only, for further details, and use of the Swift Command system (when fitted) to control heating, please see main handbook and links to external sources for further information.

OPERATE ALDE CENTRAL HEATING SYSTEM



Turn heating system ON and OFF:

To turn the panel on, press the power button (round button on left). The heating system will return to previously used settings, until adjustments are made. Press the menu button (round button on right) to display the main menu showing heating system options. Please note after a short time the display will switch back from the menu settings to the standby screen, if no further areas of the screen are touched.

Pressing and holding the power button will switch the heating OFF.

Choose required room temperature

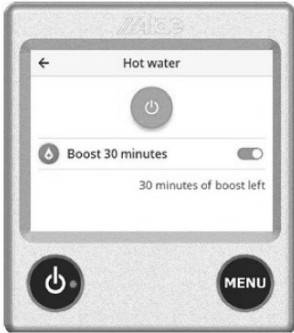
Using the touch screen display, press the 'Living room' section of the screen.



The screen will change to show the room temperature setting. On the touch screen, press the '+' and '-' icon sections of the touch screen to increase or decrease the room temperature setting.

Once a temperature is chosen, press the 'back arrow' section in the top left corner of the touch screen to return to the main menu.

OPERATE ALDE CENTRAL HEATING SYSTEM



Choose water heating settings

Press the 'Green on/off button' section of the touch screen to turn water heating from OFF to Normal.

Press the slider in the 'Boost 30 minutes' section if a higher hot water temperature is required.

Once settings are chosen, press the 'back arrow' section in the top left corner of the touch screen to return to the main menu.



Choose energy settings - Electric operation

For electrical room or water heating (mains hook up required) slide the bar in the 'Max electricity' section of the touch screen from 0kW (electric heating OFF) to 1kW, 2kW or 3kW.

Choose energy settings - Gas operation

For gas room or water heating move the slider in the 'Gas' section of the touch screen from left (OFF) to right (ON)

Once settings are chosen, press the 'back arrow' section in the top left corner of the touch screen to return to the main menu.

Choose alternate room temperature control

This feature allows the Alde heating system to measure actual room temperature from one of two locations, to suit how the motorhome is being used.

Locate the switch and 2nd thermostat position at the rear of the motorhome.



Typical 2nd thermostat and switch arrangement

With the switch OFF, room temperature will be measured by the Alde controller above the entrance door.

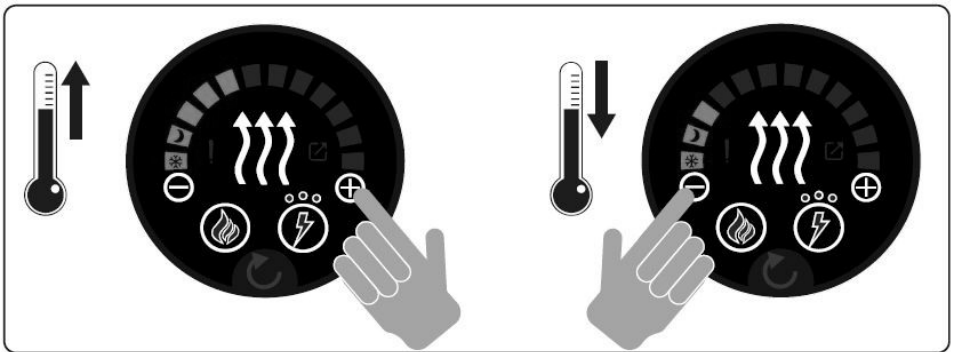
With the switch ON, room temperature will be measured by the second thermostat position, at the rear of the motorhome.

WHALE SPACE HEATER



Locate the space heater control above the sliding door on your motorhome

To select room temperature

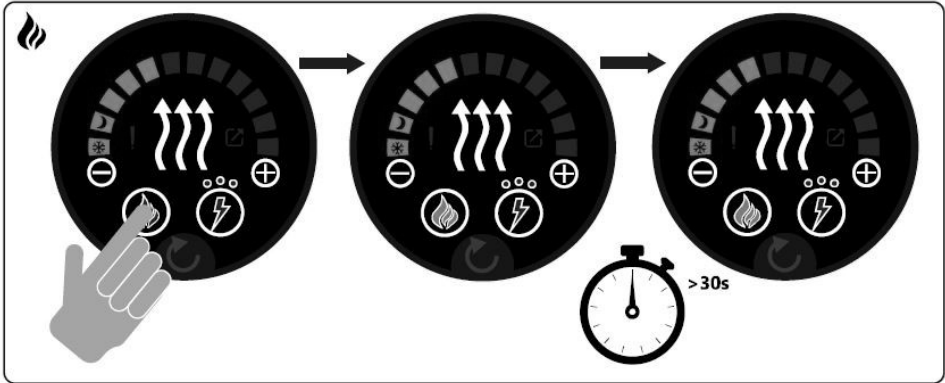


Press the '+' and '-' buttons on the controller to choose the desired temperature, as shown by the gauge which runs around the upper perimeter of the control

WHALE SPACE HEATER

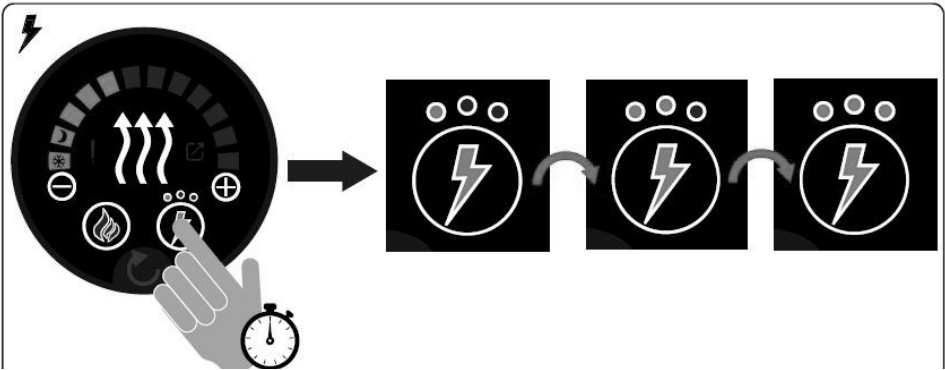
To select energy source

Gas Operation



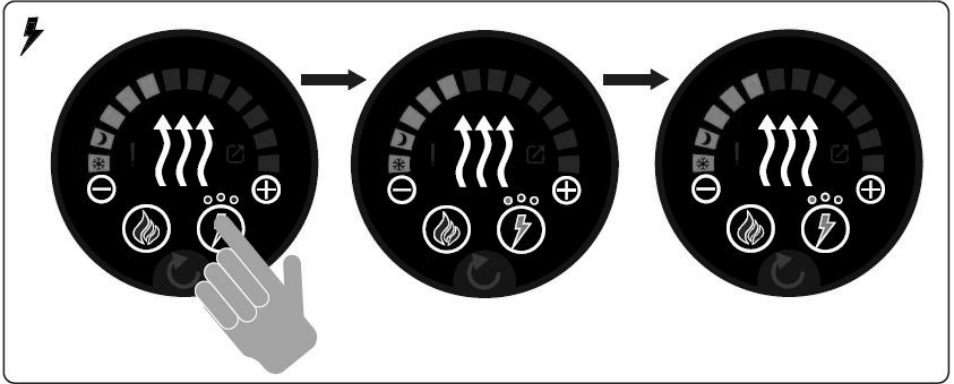
Press the 'flame' button on the control once. After approx. 30 seconds, the colour of the 'flame' button will change from Blue to Orange, to show that gas heating is in operation

Electric Operation (Only available when a mains hook up is connected)



Press and hold the 'lightening' button on the controller to cycle through 0.75kW heating (One LED illuminated above button), 1.5kW (two LED's illuminated above button), and 3.0kW (three LED's illuminated above button) settings. Let go of the button when the desired setting is selected.

WHALE SPACE HEATER



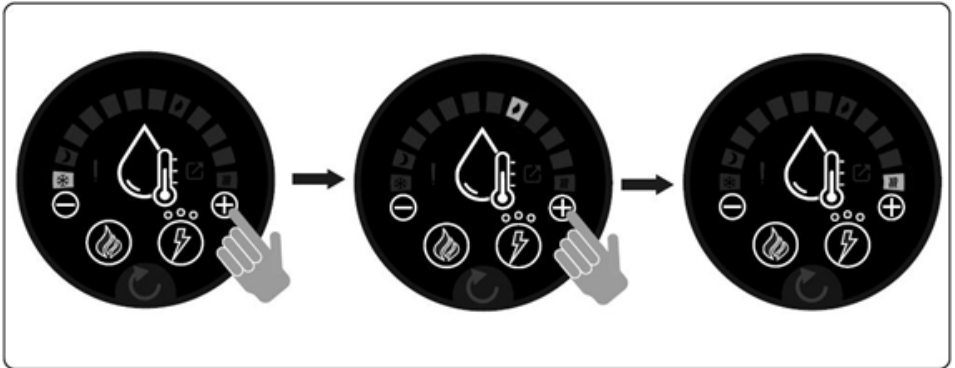
A single press of the 'lightening' button will turn electric heating ON and OFF. When the button changes from Blue to Orange illumination, this confirms that electric heating is operational.

WHALE WATER HEATER



Locate the water heater control above the sliding door on your motorhome

To select water temperature

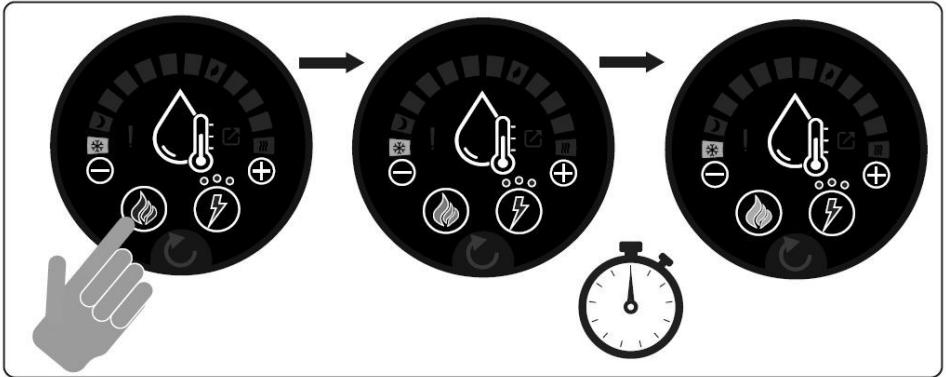


Press the '+' and '-' buttons on the controller to choose the desired temperature, as shown by the gauge which runs around the upper perimeter of the control

WHALE WATER HEATER

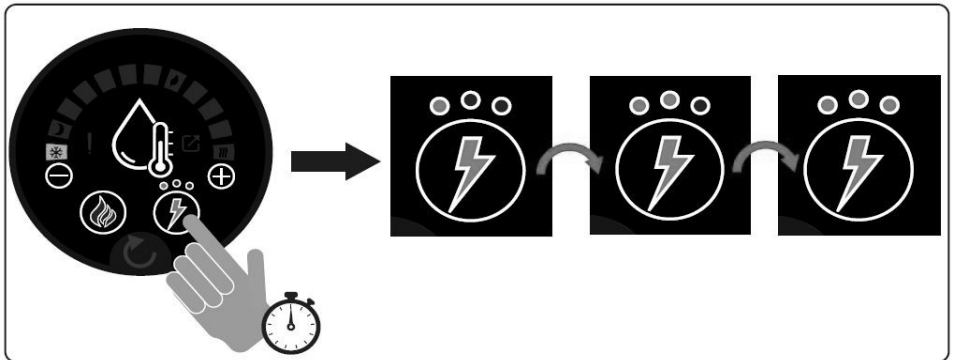
To select energy source

Gas Operation



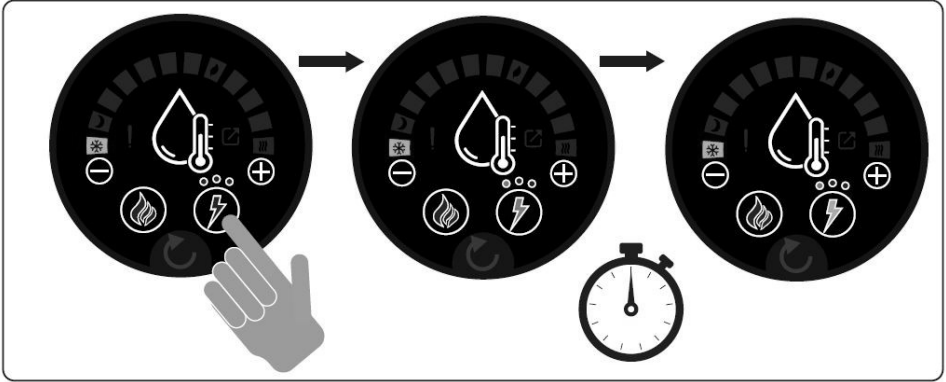
Press the 'flame' button on the control once. After approx. 30 seconds, the colour of the 'flame' button will change from Blue to Orange, to show that gas water heating is in operation

Electric Operation (Only available when a mains hook up is connected)



Press and hold the 'lightening' button on the controller to cycle through 0.38kW heating (One LED illuminated above button), 0.75kW (two LED's illuminated above button), and 1.5kW (three LED's illuminated above button) settings. Let go of the button when the desired setting is selected.

WHALE WATER HEATER



A single press of the 'lightening' button with turn electric water heating ON and OFF. When the button changes from Blue to Orange illumination, this confirms that electric heating is operational.



SWIFT

SWIFT GROUP

Dunswell Road
Cottingham
East Yorkshire
HU16 4JX

Tel: 01482 875740

Fax: 01482 840082

Customer Experience Team

enquiries@swiftleisure.co.uk

FIND OUT MORE AT **SWIFTGROUP.CO.UK**