

SWIFT LIVING[®]

Issue 2 | Winter 2024

Your home anywhere

60 YEARS OF SWIFT

THIS YEAR MARKS SWIFT'S MILESTONE
60TH YEAR IN THE LEISURE
VEHICLE MARKET

HOME FROM HOME COOKING

CAMPERVAN, HOLIDAY HOME
AND CARAVAN-FRIENDLY

TINY HOMES HUGE POTENTIAL

DO YOU OWN A PLOT OF UNUSED LAND
BUT NEED MORE IDEAS ON MAXIMISING
ITS POTENTIAL?



SWIFT



SWIFT

Introducing the next generation of Swift Campervans /

Coming soon to a dealership near you



The journey begins:
March 2024 /

swiftgroup.co.uk

Welcome to our winter edition of Swift Living magazine

The turn of the new year marks a very special time as we celebrate 60 years of Swift. Having played a key part in shaping the leisure vehicle market since 1964, we couldn't be more proud of the products we've created or the joy they've brought to so many adventurers during the last six decades.

To mark the milestone, we're taking a trip down memory lane (page 22) as we spotlight the Swift vehicles that have defined eras, shaped lifestyles and created unforgettable memories for our customers.

We discover some of the ways our vehicles align with and enhance owners' lives. From the freedom a campervan has awarded to recent retiree Simon Wright (page 44) and solo female traveller Wandering Bird (page 4) to the family caravanning expeditions of our Design and Development Director, Paul Cunningham (page 10).

Elsewhere, we're sharing the innovative steps we're taking to further elevate the experience of our products whilst protecting our beautiful planet with sustainability a top Swift priority.

We've got inspiration and advice for planning your own travels, including comforting winter warmers to cook up in your holiday home, tips for hitting the road with your four-legged friend and a wanderlust-worthy feature on caravanning in New Zealand.

Adventure awaits!

P.S. Remember to follow us on our social channels for all the latest Swift news.

CONTENTS

Flying Solo

Page 04

When I got my first motorhome, I had no clue just how much it would change my life.



Tiny Homes Huge Potential

Page 28

Do you own a plot of unused land but need more ideas on maximising its potential?



Bark On Board

Page 32

Embarking on a campervan or motorhome adventure is a thrilling journey, with the joy likely to multiply if your four-legged friend is along for the ride.

Classic Charm Meets Modern Convenience

Page 36

It's a Pearl & Bing thing.

Click & Cruise

Page 30

Your touring caravan & motorhomes queries answered



My Swift Life

Page 08

Introducing My Swift Life: your online gateway to carefree adventures.



Busman's Holiday

Page 10

A true example of taking your work on holiday with you.



Ten Years Of Swifting Smart

Page 46

As a recognised trailblazer in the leisure vehicle industry, we consistently raise the bar with our unwavering commitment to research and innovation.



Crafting Independence

Page 12

As the industry leader in truly bespoke wheelchair-accessible leisure vehicles, Coachbuilt is successfully driving inclusive adventure on the open road.

Home from home cooking

Page 16

Campervan, holiday home and caravan-friendly recipes with Rachel Green.

Postcards From New Zealand

Page 40

Boasting breathtaking coastlines, fascinating sites of historic interest and stunning national parks, New Zealand is a dream motorhome holiday destination.



The Road To Net Zero

Page 20

Swift is dedicated to minimising the environmental impact across every phase of a product's lifecycle.

60 Years Of Swift

Page 22

This year marks Swift's milestone 60th year in the leisure vehicle market.

A Retirement Dream Realised

Page 44

Swift Go's 'try before you buy' scheme can help make investing in a motorhome or campervan a smoother decision.

Retraction

In our Summer 2023 issue of Swift Living Magazine our 'Born to be Wild' article inadvertently advised the incorrect procedure to dispose of wastewater. If you are looking to Wild Camp even in Scotland, always ensure you have the landowners consent when using a Motorhome or Campervan. Assuming you do have the relevant permissions, do not pour grey water into public drains and generally, due to the remote nature of these spots, not all public toilets are connected to main sewage systems so do not empty your toilet cassette here. There are a number of campsites and places that you can dispose of your chemical waste and grey water (even if you are not staying there). Free for staying guests, charges may apply for passing visitors. Please always check the legal restrictions in the area you are visiting.

FLYING SOLO

WHEN I GOT MY FIRST MOTORHOME, I HAD NO CLUE JUST HOW MUCH IT WOULD CHANGE MY LIFE. I CERTAINLY NEVER EXPECTED TO QUIT MY JOB TO TRAVEL MORE, START A WEBSITE AND YOUTUBE CHANNEL, GET A MUD-LOVING SPANIEL CALLED MAC OR END UP LIVING IN THE VAN FULL-TIME.

Kat, the Wandering Bird, talks to us about the joys of motorhoming as a single traveller.



The freedom of travelling with your home on your back, being able to go wherever you like, for as long as you like (BREXIT rules notwithstanding!) is addictive. Being able to spend the night at the top of a mountain, park in a campsite near the coast, or stay down the road from a beautiful Christmas market (as I am whilst writing this) is something I never tire of.

People often ask where my favourite places are, and over the past few years, I've been lucky enough to visit and explore some wonderful areas. My European highlights include the Italian Dolomites, Croatia, Germany and the Austrian and Swiss Alps, but I've also loved exploring the UK – so often we neglect our own beautiful backyard.

My 2023 adventures included a five-week solo trip to Iceland (yes, dear reader, I drove a motorhome from the UK to Iceland and back) plus a five-week wander up the Wild Atlantic Way in Ireland. If you've never done either of these, add them to your bucket list immediately. They were breathtaking!

I also love Norway and hope to drive up to the top in late 2024 – fingers crossed!

Like many people, I've had a few motorhomes. The first one was with my husband and teenage daughter (we home-schooled her for a year), but the layout wasn't right for us. The second was a Swift Bessacarr 496, which had an end lounge. I LOVE this layout, but it was over 3.5 tons, meaning I couldn't drive it. Still, we did thousands of miles in it without issue.

So, when our daughter left home, we downsized to the third motorhome – a Swift Escape 685, with the end lounge layout and drop-down bed. It's been a fantastic adventure bus, although, for a long time, I was still too scared to drive it!

In 2022, my husband and I separated, which left me with a difficult decision...should I stop touring? Should I downsize to a more manageable campervan? Can I continue travelling alone?

I knew immediately I didn't want to stop exploring, but I was TERRIFIED to drive 'the beast' myself. In fact, I spent three weeks sitting at a campsite because I was too nervous to go anywhere.



Eventually, I realised there wouldn't be a day when I felt 'ready' to drive this thing. I had to pull on my big girl pants and just do it.

That was over a year ago. Since then, I've travelled thousands of miles solo in my motorhome. I've explored Ireland, the Peak District, the Lakes and Scotland. I even drove my 6.8m motorhome over the Applecross Pass alone in thick fog!

I know plenty of people, men and women, have concerns about motorhoming, especially alone. Sometimes, it feels almost too daunting. My advice is don't let the fear of what MIGHT happen stop you from having adventures - there's a whole exciting world out there to explore. I promise if I can do it, so can you!

Happy Wandering,

Kat x



You can find out more about Kat the Wandering Bird on her website, www.wandering-bird.com, and follow her adventures in her Swift Escape on YouTube, Facebook and Instagram at [@wanderingbird.adventures](https://www.instagram.com/wanderingbird.adventures)



MY SWIFT LIFE



INTRODUCING MY SWIFT LIFE: YOUR ONLINE GATEWAY TO CAREFREE ADVENTURES



At Swift, we understand that the need for reliable customer support doesn't end when you roll out the showroom and hit the open road in your new caravan or motorhome. That's why we're excited to bring you 'My Swift Life', a personalised online aftercare service designed to make your ownership experience as adventure-filled and hassle-free as possible.

Replacing our previous customer portal (Connect Direct), My Swift Life is your personal on-road companion, ensuring you have individually tailored vehicle information and super helpful resources whenever you need them, wherever you are!

Available to all Swift caravan and motorhome owners*, you can use your online profile to access details specific to you, from outstanding warranty claims and service information to chargeable orders placed on your behalf by your Swift dealer or servicing provider.

Furthermore, you can log into My Swift Life to live-message our customer experience retail team, receive tech support and report any faults, enabling us to work together and respond promptly to your needs.

What's more, you'll have access to valuable tips and our comprehensive video library to help familiarise yourself with your vehicle and provide speedy solutions so you can get on with your journey swiftly.

Key 'My Swift Life' Benefits

- Personalised vehicle information
- Helpful bulletins, alerts and "How To" video guides
- Fault reporting directly to customer care team
- Authorised claims sent directly to dealer to speed up warranty process
- Product upgrade notifications
- Live messaging direct to customer experience retail team, including tech support
- Service history records and reminders

Visit www.myswiftlife.co.uk for more information and to register.

* Available to UK registered customers only.



Wherever the road takes you, stay connected.

We're excited to welcome you to a **community** built on the values of comfort and convenience. Just like any family, we want to ensure that you are always **connected** and **secure**, especially when it comes to your adventures in your **Swift Motorhome**.

Ford Assistance Plan

A Ford Assistance Plan makes it easy to get back on the road. If you run into trouble, our roadside assistance team will be given your precise location, and information on your vehicle, so they know the issue before arrival*

Remote Start

Cold morning? Automatic vehicles can be started remotely so that they're warmed up, de-iced and ready to go when you are.

Health Status + Alerts

Your vehicle's health is important. Discovering potential issues early can make a huge difference. See your vehicle's health status in detail, and get alerts when something needs your attention.

Download the free FordPass App now to unlock key features and functionality.

Scan the QR code below to find out more...



*The Ford Roadside Assistance feature requires an active Ford Roadside Assistance Plan.

Ford policy is one of continuous product development. The right is reserved to change the items illustrated and described. FordPass features shown are available with selected vehicle models and specifications.





BUSMAN'S HOLIDAY

A TRUE EXAMPLE OF TAKING YOUR WORK ON HOLIDAY WITH YOU, PAUL CUNNINGHAM IS SWIFT'S DESIGN AND DEVELOPMENT DIRECTOR, WHO LOVES NOTHING MORE THAN A FAMILY CARAVANNING EXPEDITION. HERE, HE SHARES HOW HIS PASSION FOR SHAPING THE PERFECT VEHICLE FOR HOLIDAYMAKERS SEAMLESSLY EXTENDS TO HIS OWN LEISURE-TIME GETAWAYS. PLUS, HE GIVES US AN INSIGHT INTO EXCITING SWIFT DEVELOPMENTS FOR THE COMING YEAR AND BEYOND!

Tell us about your role at Swift?

My current position sees me leading the talented teams of designers and engineers who develop our products. The role allows me to combine my love of the great outdoors and engineering. The leisure vehicle industry has come a long way from its cottage industry roots, and the integration of technology and the current rate of change are hugely exciting. We are in the business of providing people with products that they will have incredible holiday experiences in. Knowing we are enriching customers' lives in this way is hugely rewarding.

What came first - Swift or caravanning?

I had many childhood experiences in leisure vehicles, but when I joined Swift, I started using our products earnestly. I have had the opportunity to use a variety of vehicles over the years as part of our development process, as well as owning products of my own.

What caravan do you own (we hope it's a Swift!), and why did you choose that one?

It is! We currently have a Sprite Alpine 4, 2021. We like the compact nature of the layout, which means we can keep it on our home driveway, and it's easier to tow. The layout itself works really well for a family of four and allows the children to use the rear double bed as a cinema area on an evening while we relax upfront. The kitchen and lounge areas are really spacious, and there's plenty of storage.

The only real compromise is the combined washroom and shower area, but otherwise, it's a really functional layout for a family - and one of the most popular layouts with our customers!

What types of trips do you take in your caravan?

We predominantly use it for weekend breaks, whereby we take the mountain bikes to fairly local haunts, such as Dalby Forest, or enjoy the many outdoor activities that the Yorkshire area offers. Having the ability to set up a fixed base camp and use the tow car to navigate the local area works well for us. We also take longer trips when possible and have travelled most of the south coast. We haven't ventured overseas yet but have some trips planned for later this year.

What do you and your family love about caravanning? How would you describe the experience to newbies?

Swift's slogan, 'Your Home Anywhere', perfectly encapsulates what we love about caravanning. Using leisure vehicles for accommodation affords a really intimate family experience in the great outdoors. It lets us have our creature comforts and amenities regardless of where we visit.

Anything you don't like?

Coming home!

How do you use your personal experience in caravanning in your day job?

We have really detailed testing and evaluation processes at Swift, but nothing gives the same level of insight as using the product yourself. When we take caravans and motorhomes out from our development fleet, we write a comprehensive report that comments on all functionality and quality aspects. Suggested changes can be as simple as improving storage to significant changes to heating systems and engineering components to improve performance. My wife Nicola also works at Swift as a CAD Design Engineer, so we always have a strong opinion on how to improve the products.

Can you give us any sneak peeks into things we'll see from Swift's new ranges?

Swift is always looking to the future, and we pride ourselves on providing innovative products with cutting-edge technology and striking aesthetics which align with the latest design trends. You can expect updates to our core products, some exciting new product concepts and the latest technologies, which will help us increase our focus on both sustainability and efficiency.



Crafting Independence

AS THE INDUSTRY LEADER IN TRULY BESPOKE WHEELCHAIR-ACCESSIBLE LEISURE VEHICLES, COACHBUILT IS SUCCESSFULLY DRIVING INCLUSIVE ADVENTURE ON THE OPEN ROAD.



Specialising in designing and manufacturing wheelchair-accessible motorhomes and caravans, Coachbuilt aims to provide life-changing solutions to improve the lives of others by eliminating a 'one-size-fits-all' accommodation approach. Furthermore, its mission extends to helping empower and transform Great Britain into the most wheelchair-accessible place to visit and travel by road.

Designed with freedom, independence and adventure in mind and crafted to meet exact requirements, Coachbuilt's vehicles provide a 'home from home' that can be taken "wherever the road leads". Whether it's a day trip, sporting event, short break, long-distance journey, or simply exploring off the beaten track, owners have everything they need on board for a seamless travel experience.

Coachbuilt's range of Leisure Independent Vehicle motorhomes and caravans include Swift models ranging from two to six-berths, providing options for couples and families. Once an ideal size, specification, budget, and layout have been discussed, its team will design, manufacture, and modify the base Swift Vehicle around personal requirements for independent living and uncompromised comfort on the road.

As standard, the motorhomes and caravans boast spacious and functional layouts, including wetrooms, with wheelchair accessibility throughout. Bespoke modifications are then seamlessly integrated to make the space work for the individual, spanning ceiling track hoists, wheelchair restraint systems and cassette lifts, six-way seats, driver hand controls, profiling and height-adjustable beds, changing tables and more.

The result is a truly bespoke creation designed to provide safe and stylish everyday wheelchair-accessible travel, hygienic and practical onboard toileting and changing facilities, a safe space for respite and relaxation while away from home, and hassle-free, long-distance travel.

For customers, that means taking to the road with ultimate confidence that everything they need is at hand, providing their own tailor-made accommodation, a sense of independence, and an accessible route to limitless adventures.





**Source Independent Living:
<https://www.independentliving.co.uk/industry-news/10-wheel-chair-friendly-camping-destinations-in-the-uk/>*



FIVE OF THE BEST WHEELCHAIR-FRIENDLY UK CARAVAN SITES

When ready to begin your Coachbuilt leisure vehicle adventures, we recommend exploring some of the beautiful countryside and breathtaking landscapes the UK has to offer. To help get the planning underway, here are five of the best wheelchair-friendly caravan sites* with accessible facilities to use as your base camp or stop-offs.

01. CHATSWORTH PARK CARAVAN CLUB SITE, PEAK DISTRICT

Set in a beautiful location on the picturesque Chatsworth Estate in Bakewell, this attractive site has plenty to enjoy nearby, from the surrounding countryside and historic Chatsworth House to a farmyard and playground for those holidaying with children.

02. LOCH NESS SHORES CAMPING AND CARAVANNING CLUB SITE, SCOTTISH HIGHLANDS

Ticking the box for breathtaking scenery, this idyllic site, located on the banks of Loch Ness, is perfect for those looking to immerse themselves in nature with panoramic views of the enchanting loch, forestry and mountains.

03. LONG ACRES TOURING PARK, SURREY

This spacious, family-run site offers the best of both worlds, being set within 45 acres of stunning Surrey countryside and yet within easy reach of top tourist attractions such as Wakehurst Place Gardens and Thorpe Park.

04. HENDRA HOLIDAY PARK, CORNWALL

Facilitating desires for a getaway by the great British seaside, this family-friendly site is located close to the beautiful beaches of Newquay and surrounded by picture postcard destinations of Cornwall to explore.

05. PARK CLIFFE CAMPING AND CARAVAN ESTATE, LAKE DISTRICT

A perfect retreat away from the hustle and bustle, this tranquil estate is surrounded by natural scenery in the heart of the national park, with stunning views over Lake Windermere and the fells and mountains beyond.

*For more information please visit:
www.coachbuiltgb.co.uk/*

Home from home cooking

CAMPERVAN, HOLIDAY HOME AND CARAVAN-FRIENDLY RECIPES
WITH RACHEL GREEN

FEATURING BEAUTIFULLY TENDER BEEF SHIN IN A MELODY OF VEGETABLES, PALE ALE AND HERBS, PLUS FLUFFY HORSERADISH AND PARSLEY DUMPLINGS, THIS IS HIGHLY FLAVOURSOME FOOD THAT WILL WARM THE SOUL AND DELIGHT THE TASTE BUDS!



For our winter edition, chef, author, TV presenter and food campaigner Rachel Green has come up with the ultimate comfort food for Swift adventurers to cook and devour on their travels: beef casserole with dumplings!

As a 14th-generation farmer, Rachel is passionate about seasonal produce and has a wealth of experience cooking a wide variety of cuisine in all types of environments, from fields to beaches.

Serving enough to feed a family or provide more than one meal, Rachel cooked-up this delicious braised beef shin and dumplings recipe inside the Swift Vendee Lodge using the five burner gas hob and Belling oven.

Featuring beautifully tender beef shin in a melody of vegetables, pale ale and herbs, plus fluffy horseradish and parsley dumplings, this is highly flavoursome food that will warm the soul and delight the taste buds!

Pale Ale Braised Beef Shin with Horseradish & Parsley Dumplings

Serves: 6-8

Prep time: 30 minutes

Cooking time: 2-2½ hours



Ingredients

- 75g plain flour
- Salt & pepper
- 1kg beef shin, diced
- 5 tbsp vegetable oil
- 2 large onions, chopped
- 2 large carrots, roughly chopped
- 1 whole garlic bulb, halved around the equator
- 1 tbsp tomato purée
- 500ml pale ale
- 500ml rich beef stock
- ½ tbsp Marmite
- 1 bay leaf
- ½ tsp dried thyme or mixed herbs
- 3 tbsp redcurrant jelly

For the dumplings:

- 150g self-raising flour
- 75g beef suet
- ¼ tsp dried thyme or mixed herbs
- 2 tbsp chopped parsley
- 3-4 tbsp creamed horseradish
- Salt & pepper



Cooking shoot was hosted at Bridlington Caravan Centre

METHOD

1. Preheat the oven to 160°C/140°C fan/ Gas Mark 2.
2. Put the flour into a large mixing bowl and season with a little salt and pepper. Toss the pieces of beef in the flour until coated.
3. Heat a tablespoon of oil in a frying pan and brown the meat in small batches. Once browned and caramelised, transfer the beef to a casserole pan using a slotted spoon and repeat, adding more oil to fry each further batch of beef.
4. Add the remaining oil to the frying pan along with the chopped onions and carrots and cook, stirring until slightly brown, then add the garlic bulb halves, cut side down. When all the vegetables are caramelised, add the rest of the seasoned flour to the frying pan along with the tomato purée and cook for a further 30 seconds.
5. Pour the pale ale into the frying pan and stir well, scraping the sticky bits off the bottom of the frying pan and then tip the whole lot into the casserole pan.
6. Add the stock, Marmite, bay leaf, thyme or mixed herbs and redcurrant jelly. Stir well, bring to a simmer, taste and adjust the seasoning if necessary. Cover with a lid and cook for 2 hours in the preheated oven. Check the casserole from time to time, adding more stock if necessary.
7. Towards the end of the 2 hours cooking time, make the dumplings. Mix all the ingredients together, season with a little salt and pepper and add 4-5 tablespoons of cold water until you have a slightly sticky dough. Tip the dough out onto a lightly floured surface and shape into 10 equal-sized balls.
8. Remove the casserole from the oven, taste and adjust the seasoning if necessary. If the sauce is looking a little too thick, add 100ml of water before placing the dumplings on top.
9. Turn the oven up to 180°C/160°C fan/ Gas Mark 4, return the casserole to the oven and cook uncovered for 25-30 minutes until the dumplings are cooked through and slightly caramelised.
10. Remove the casserole from the oven and serve immediately.



The Road to Net Zero

AS A RESPONSIBLE MANUFACTURER WHO DESIGN AND ENGINEER LEISURE PRODUCTS TO BE ENJOYED IN THE GREAT OUTDOORS, SWIFT IS DEDICATED TO MINIMISING THE ENVIRONMENTAL IMPACT ACROSS EVERY PHASE OF A PRODUCT'S LIFECYCLE.

This is reflected in the trailblazing efforts of our design and engineering teams, who are committed to enhancing the experience of our products and protecting our beautiful planet. And so, thinking about mother nature has become second nature as we continue to explore how to drive performance, efficiency and sustainability through our design and manufacturing processes.

Combining our passion with intention, we're pleased to be taking significant steps towards a greener future and paving the road to becoming net zero. This includes conducting valuable research to define our long-term product development plans and masterminding innovative solutions to help revolutionise the leisure vehicle and holiday home landscape.

Here's some of the recent progress we've made on our journey to achieving a more sustainable way to manufacture.

Efficiency in Motion
Partnering with Warwick University for an extensive study on the rapid electrification of tow cars and base vehicles, we've been exploring the impact this will have on the design of our products. The research also focused on the idea of integrating advanced battery systems to eliminate LPG as a habitation energy source. Finally, it emphasised the importance of vehicle aerodynamics, an area we continue to prioritise working alongside world leaders in the field, TotalSim. The benefits of advancing the aerodynamics of our vehicles are twofold: reducing emissions released into the atmosphere and lessening fuel consumption costs for our customers.

Basecamp Glow-Up
We recently unveiled our Basecamp EVO all-electric prototype concept vehicle at the NEC Birmingham during the Motorhome and Caravan Show. Providing an inspiring blueprint for what our future vehicles might look like when LPG is phased out as a fuel source, it showcased a myriad of environmentally friendly features. From its all-electric architecture and enhanced solar photovoltaics (PV) capability to its rainwater toilet flush system and extensive use of recycled materials throughout. While there are no plans to put the vehicle into production just yet, it confirmed a customer appetite for an all-electric and sustainably intelligent van.

Holiday Homes
Our sustainable innovation isn't confined to our road-going products; we've also been evolving our next generation of holiday homes and lodges. Partnering with Hull University's Aura Innovation Centre, we're currently designing, developing and validating a range of technologies to improve the performance of our building fabric, heating and hot water systems, and energy generation and storage. Thus ensuring that our holiday home products are as efficient as possible without compromising the comfort or style of these welcoming leisure retreats.

Better Together
Knowing climate change isn't an issue we can tackle alone, we're keen to encourage users of Swift leisure vehicles to join us on our journey towards a greener future.

Choosing a caravanning getaway means instantly making a more eco-friendly choice than booking a trip that requires air travel. Research has revealed that an average annual usage of 54 overnight stays in a caravan emits 2 tonnes of CO₂ per year. Meanwhile, the carbon footprint of one passenger on a return flight from London to Perth is 3.15 tonnes of CO₂*. And so, an average yearly usage of a caravan emits approximately 37% less CO₂ than a single return flight from the UK to Australia.

*Stat sources: www.ifeu.de and www.statista.com

But, when heading out on the road, more can be done to help minimise your CO₂ footprint and maximise sustainable Swift adventures.

SMALL STEPS

- Reduce onboard weight by travelling with empty water tanks and packing lighter to lessen towing emissions.
- Minimise freshwater consumption and waste.
- Use formaldehyde-free toilet fluid, which is more environmentally friendly.
- Opt for low-wattage appliances for items like toasters and kettles.

LARGER LEAPS

- Use Futuria biogas (instead of traditional LPG), which is made from more natural sources.
- Choose more local campsites to reduce travel emissions.
- Look for 'eco campsites' that adopt green policies and offer low-impact recreational camping experiences and eco-friendly facilities.



Credit: NotAnotherWhiteBox

60 YEARS OF SWIFT

THIS YEAR MARKS SWIFT'S MILESTONE 60TH YEAR IN THE LEISURE VEHICLE INDUSTRY, GROWING FROM AN AMBITIOUS START-UP IN THE 1960S TO A TRAILBLAZING INDUSTRY LEADER OF TODAY. TO CELEBRATE, WE'RE TRAVELLING THROUGH TIME TO EXPLORE THE ICONIC SWIFT MODELS THAT DEFINED ERAS, ESTABLISHED INDUSTRY FIRSTS AND SHAPED OUR UNIQUE STORY.

While our products have altered in appearance over the years, our commitment to cutting-edge design and unwavering quality has remained steadfast. This fascinating timeline highlights not just the evolution of our much-loved leisure vehicles but also the innovative spirit that has become synonymous with Swift during the past 60 remarkable years.

From our pioneering first touring caravan, The Ten, wheeled out to the world in 1964, to the debut Kon-Tiki Swift motorhome of the 1980s and the launch of our holiday home models in 2004, through to our more recent contemporary models, the sporty, compact Basecamp and our first pop-top campervan, Monza, it's been an incredible journey!



1960

1964

Ken Smith partners with Ken Day to create the first touring caravan, 'The Ten,' in Hull, and sold it for £289.

1965

Ken Smith buys out his partner and launches 'Clubman' and 'Valken' models.

1966

Swift operates in Hedon Road, Hull, with eight employees. They introduce the 'ette' range with 'Alouette' and 'Silhouette' models.

1967

The 'ette' range expands to five models, and Swift begins exporting to West Germany and Denmark.

1968

Swift debuts at the Earls Court Caravan Show, showcasing a signature deep front window style that becomes synonymous with Swift models for the next decade. The 'Rapide' range is introduced for lightweight value.

1969

Swift grows to 50 employees, producing around 400 units a year, and relocates to a 10,000 sq ft factory.

1970

Swift pioneers two-tone exteriors in pale green and white, adds more models, and appoints over 30 UK dealers. The company moves to a new 15,000 sq ft factory in Dunswell Road, Cottingham.



1971

Swift Owners Club forms with over 40 members, holding the first Owners Rally at Alton Towers.



1972

Founder Ken Smith passes away, leaving his wife Joan and son Peter to continue the Swift success story.

1973

Swift enters the British Caravan Road Rally, showcasing quality, performance and road handling of Swift products.



1976

Swift introduces the luxury 'Corniche' range.



1977-1979

Swift's focus on the middle to upper market segments proves recession beating. Production reaches around 1,500 units annually, employing 140 staff.

1980

1980-1983

Swift pioneers scientific design methods, including wind tunnel testing and computer modelling - which lead to the Cottingham range, featuring the first caravan with a built-in aerofoil roof. Increased demand also allows the factory to expand to 80,000 sq ft.



1985

In-house GRP (glass reinforced plastic) begins, making Swift the only manufacturer to have this facility. Kon-Tiki, Swift's first motorhome prototype launches gaining success in the UK, Sweden and Denmark.



1984-1985

Swift acquires Burstwick Transport, gaining control over manufacturing and distribution. The Challenger range launches and replaces the Cottingham range.



1986-1988

Corniche range becomes the first touring caravan to have full onepiece GRP mouldings for the front locker, roof and rear panel. The twin-axle Challenger range sets new industry standards with blown air heating and optional air conditioning. Swift Owners Club membership surpasses 1,000, and production reaches 2,500 units.



1989

Swift acquires Cotswold Coachcraft, adding a luxury coachbuilt touring brand. Swift becomes the second-largest tourer manufacturer with over 5,000 units, 500+ staff and a 212,000 sq ft factory.

1990

1990

Swift acquires additional Cottingham site, setting the stage for substantial investments in manufacturing facilities, including the most modern manufacturing facilities in Europe, specialised spare parts buildings, an on-site training centre, and advanced CAD CAM design systems.



1991

The luxurious Cotswold Celeste range launches alongside the returning budget-friendly yet Swift quality, Rapide. Motorhomes expand with the Kon-Tiki range and the entry-level Capri. New product testing begins including high speed test track sessions to monitor stability, brakes, tyres and suspension, putting every component to the ultimate test before manufacture.

1992

More speed and durability records are achieved with the Swift Rapide and Swift Corniche. Abbey Caravans is purchased and production is moved to Cottingham.

1993-1994

Swift expands exports with the Euroland range in Holland. The motorhome range grows with Swift's first van conversion, the Carrera.



1995

Swift becomes the UK's top motorhome manufacturer following the launch of the Sundance coachbuilt range. 'Dealer special edition vans' are introduced - another industry first.



1996-1998

Swift acquires Bessacarr and invests £3 million in new machinery and design systems. The company gains the Investor in People Award. swiftgroup.co.uk launches.



1999

Swift launches the Bel Air A-Class, the Challenger 500SE - the UK's first fixed bed touring caravan, and becomes the largest UK manufacturer.

2000

2000-2003

The Charisma range replaces the Classic. Swift acquires ABI touring caravans, adding brands including Ace, Award, Monza, Manhattan, and Brooklyn.



2004

Swift becomes the only manufacturer to operate in all three market sectors with the launch of the Debut and Vendee holiday home models. A new factory for holiday homes opens in Hull.

2005-2006

A new £8 million factory is built in Cottingham. With recession looming, the importance of value for money leads to the re-launch of the Sprite brand. One-piece aluminium sides are introduced.

2007

Swift acquires Autocruise Motorhomes, and later becomes the leader in van conversion motorhomes.

2008-2009

Despite recession, Swift streamlines touring brands to focus on Swift, Sterling Caravans, and Sprite, along with motorhomes Swift, Bessacarr, and Autocruise. The Escape motorhome range is launched.



2010



2010-2011

All Swift tourers gain Grade 3 Classification for insulation. Swift Talk, an owner-oriented social networking site, is launched. Holiday home offerings expand with more models including lodges.

2011

Swift introduces innovative body shell designs with GRP mouldings, an aerodynamic shape and integrated sunroof windows.

2012

Swift TV, a web-based TV channel, is launched. Swift Group becomes the first UK manufacturer with full European Community Whole Vehicle Type Approval for every model. SMART construction system is introduced.

2014

Connect Direct launches and provides online customer service. Swift celebrates 10 years of holiday home production and 20 years as the largest UK leisure vehicle manufacturer.

2016

Basecamp, a compact and sporty camping vehicle, is launched. Swift Command and Swift Command Tracker is launched, providing enhanced vehicle management and security.

2018

Strategic partnerships with Black Horse and Caravan Guard are formed. Swift moves holiday home production to a state-of-the-art, purpose-built facility at its main site in Cottingham. Swift opens Swift Go, a motorhome hire business.

2019

Kon-Tiki Dynamic, a motorsport-inspired edition, is introduced.



2020

2020

During the COVID-19 pandemic, Swift temporarily closed its manufacturing site for five months. A 'staycation' campaign is launched in response to the uncertainty of holidays abroad. Demand increases with new customers joining the market. In the absence of physical shows, Swift launched the industry's first virtual show, Swift Live.

2021

Swift introduced the Monza, its first pop-top campervan.



2023

Swift ventured into television advertising with its debut TV campaign, Every Swift has a Story. Swift introduced its core values program, EPIC (Energy, Professionalism, Innovation, Community), and established a working group to implement the program across the company. Investments in the production site continue with further multi-million pound investments, including a new state-of-the-art holiday home production line and the construction of a new employee café, Hub Sixty-Four. Swift Living Magazine was launched, aiming to provide travel related inspiration. Swift's first 4-bed Lodge is launched, adding to the Edmonton range.

TINY HOMES

HUGE POTENTIAL

DO YOU OWN A PLOT OF UNUSED LAND BUT NEED MORE IDEAS ON MAXIMISING ITS POTENTIAL? THEN, THE SWIFT S-POD COULD BE THE WINNING SOLUTION YOU'VE BEEN SEARCHING FOR! JOIN US AS WE EXPLORE WHAT MAKES THESE SMALL YET MIGHTY PODS ATTRACTIVE INCOME GENERATORS.

What is an S-Pod?

These 'tiny homes' are part of our Swift S-Pod range, offering fully self-contained holiday units with flexible living and sleeping space. Equally attractive on the outside as within, all now feature our 'Urban' scheme, effortlessly blending natural woods with clean finishes and modern design for a rustic industrial look. Housing an open-plan layout with an efficient footprint, these innovative pods are both comfortable and functional, with an integrated outdoor veranda completing their appeal.

Who are they for?

As well as using on holiday parks, our S-Pods are ideal for people looking to generate income from a spare plot of land, utilising them as highly desirable holiday lets. Choose from the S-Pod 4, with capacity for up to four people, or the 6 Escape, which can comfortably accommodate six guests. Adaptable to any setting, both blend beautifully with natural surroundings thanks to the pods' high-density wood composite cladding with durable, realistic wood grain texture. Built to last and run efficiently, each features a galvanised chassis, coated steel pantile roof, bonded 'sandwich' exterior walls and energy-efficient double glazing.

What's the potential?

Our S-Pods have proven successful at varying sites and regions across the UK with favourable occupancy rates and positive revenue totals. For example, a holiday park in mid-Wales that lets the S-Pod 6 Escape on its site achieve an 81% occupancy rate with a £1,087 AWR (annual weekly return) for a total revenue of nearly £46,000 per unit. Keen to help get your holiday lets on the map, ample support is available to ensure a steady stream of visitors. Consider leveraging the benefits of partnering with self-catering holiday accommodation experts, like Hoseasons, for assistance in promoting your new venture can also help reach a broader audience and bring more bookings your way!

Why do people love them?

Combining ingenious compact living and enviable luxury, they provide an elevated glamping experience, complete with stylish interiors, comfortable furnishings and modern appliances. Outside, the integrated decked area offers open-air relaxation and dining space that can be further enhanced with the addition of outdoor furniture and perhaps even a hot tub!

INSTAGRAMMABLE STYLE & SUBSTANCE



Modern exterior finished with LED canopy downlights

How to find out more?

If you're interested in embarking on a Swift S-Pod venture, simply email marketing@swiftleisure.co.uk for further advice or to request a brochure. Our team is also happy to provide information on planning permission and site licensing requirements.



Soft black matt kitchen units with chic white marble effect worktop



Spacious king-size bed topped with luxurious Aurora Duvalay mattress



Stylish furniture providing space-saving solutions and smart storage

CLICK & CRUISE

YOUR TOURING CARAVAN & MOTORHOMES QUERIES ANSWERED



Owning a caravan or motorhome should be an experience fuelled by excitement, not overshadowed by uncertainties. Here, we reveal how our Swift online resource centre puts peace of mind at your fingertips through a range of helpful guides, articles and features.

Curious about where you can park your campervan in the UK? Want to know the cost of storing a leisure vehicle? Or wondering if buying a touring caravan is a good investment? Then look no further than our info-packed Swift resource centre.

Created to address the questions consumers ask most, this carefully curated online collection of guides, articles and features is your go-to for insightful and easy-to-understand information on touring caravans, campervans and motorhomes.

Whether you're an experienced traveller or a first-time adventurer, there's a broad spectrum of topics to explore - from choosing a motorhome that aligns with your preferences via our ultimate buying guide to top tips on maintaining your vehicle - plus fresh new content is added regularly.

Navigating the Cold with Your Leisure Vehicle

Amidst the current winter season, a top-clicked article is our guidance on the winter suitability of leisure vehicles.

This takes a close look at how modern motorhomes and caravans are designed to withstand wintery conditions and the specific factors that affect a vehicle's suitability for the season, including its construction, insulation and heating system.

A must-read for those with winter adventures in mind, the article also features helpful advice on preparing your vehicle for more challenging conditions, and ensuring you stay safe, warm and well-equipped on the road.

To read the article in full and find many others of interest, visit www.swiftgroup.co.uk/resources.

Part of the winter-prep checklist includes guidance on:

- Fuel and power supply
- Winter camping locations
- Tyre spec
- Snow load capacity
- Winter accessories



Insurance exclusively for Swift owners

Specialist cover for touring caravans, motorhomes and campervans



Big savings for Swift installed security



Wide cover backed by a leading UK insurer



GET A QUOTE

01422 397 767

Open 8am-8pm weekdays, 9am-4pm weekends
supersureinsurance.co.uk/mag



Not available for Swift static caravans and lodges. Supersure insurance is arranged and administered by Caravan Guard Limited, which is authorised and regulated by the Financial Conduct Authority.



Left: Tayto posing and having a break mid walk.
Right: Reggie taking advantage of the comfy sofa.



BARK ON BOARD

A GUIDE TO TRAVELLING WITH YOUR DOG

Embarking on a campervan or motorhome adventure is a thrilling journey, with the joy likely to multiply if your four-legged friend is along for the ride.

Travelling with a pooch in tow requires some extra planning, but it will be time well spent when you and your canine companion have a road trip to remember... for all the right reasons!

Keen to help get you off on the right foot (or paw!), we've put together this helpful guide, covering all things wheels and wags, including how to travel safely with your pet, keeping them comfortable on the go and adhering to the all-important canine campsite etiquette.

So, whether a seasoned road tripper or a first-time camper, you can navigate a seamless fido-friendly getaway.

ROAMING WITH ROVER: TRAVELLING

- Use a dedicated and securely positioned crate or dog seat belt.
- Always have a collar with identification on your dog, and ensure your pet is microchipped.
- If travelling to an EU country, apply for an animal health certificate from a designated vet 14 days before travel.
- If travelling outside the UK, you need to apply for an export certificate.
- Ensure your pet is fully vaccinated and compliant with the country you're visiting.
- Store emergency contact details in the car so someone can be contacted to care for your pet in an emergency or accident.
- Break every two hours for a dog leg stretch or more frequently for puppies.
- Pack dog food and water to keep them hydrated and content. Consider ice packs for cold items.
- Carry first aid pet essential items like saline wash, dressings, tweezers, and tick remover.
- Ensure your overnight sites and stop-offs are dog-friendly with appropriate facilities.

CHILLED POOCH: KEEPING COOL

- Ensure adequate ventilation during travel for your dog's comfort.
- Use cooling mats and coats cautiously; don't let them dry out.
- Park near trees or in shady areas at campsites for a cool, sheltered space.
- Never leave your dog unattended in vehicles.
- Carry water for your pup to stay hydrated on the go.

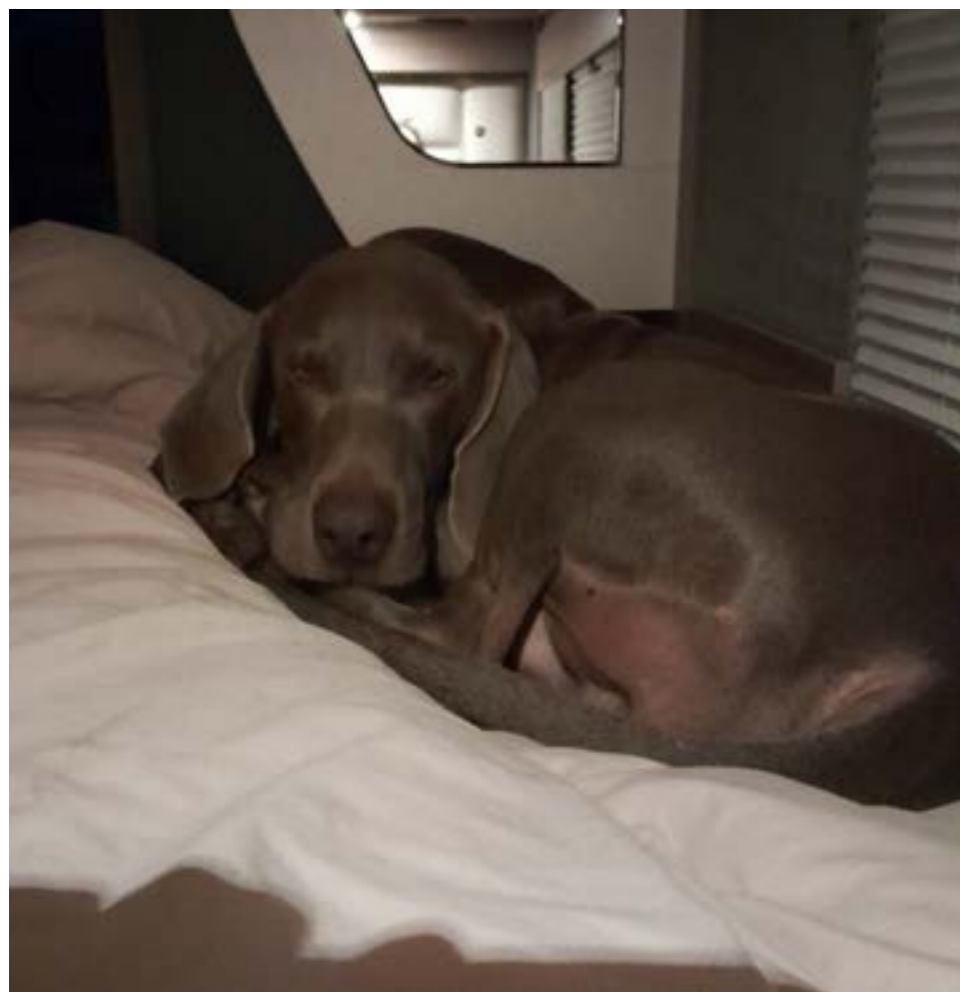
BEST BEHAVIOUR: CAMPING ETIQUETTE

- Keep dogs on a lead or long line within your pitch boundaries.
- Use an aluminium foil fence to create a designated pitch area for off-lead roaming and shade.
- Respect campsite rules; use designated dog toilet areas, pick up waste, and dispose of it in assigned bins.
- Check country-specific rules; some campsites may require dogs to be muzzled.
- Observe campsite "quiet time" after 9/10 pm; minimise your pup's barking to respect fellow campers.



Doggy bag: Packing list*

- Lead, harness, collar and tag
- Food and food bowl
- Water and water bowl
- Tasty treats
- Dog toys
- Comfy bed/blanket
- Poo bags
- Towels
- Cool mat (in summer)
- Dog sun cream
- Pet's medication



TOP TIPS

1. Check that your pup's microchip is up to date. If the details are wrong and your dog was to go missing while you're away, it'll be harder to be reunited.
2. Different parts of the country have different disease risks, so it's best to ensure your dog is up to date with vaccinations and flea, tick and worming treatments before travelling.
3. Make sure to research where the local emergency vet is in case your dog needs to be seen while you're away.
4. Pack an extra-long lead so your dog can roam outside whilst being safe.
5. You need to obtain a new animal health certificate for each trip to an EU country or Northern Ireland. It costs approximately £150 and needs to be obtained in the 10 days before travel and is then valid for four months. If you travel and then return to Great Britain, it is no longer valid.



*Source:
www.dogtrust.org.uk/dog-advice/life-with-your-dog/outdoors/holiday-with-dog

Classic Charm Meets Modern Convenience

IT'S A PEARL & BING THING



Malcolm and Tracey Holland are Basecamp owners you'll likely remember should you ever spot them on the road thanks to their unique tow vehicle...a 1941 Cadillac named Pearl! Join us as we discover how this modern Swift caravan and vintage classic car provide a dynamic travel duo that helps facilitate their eclectic lifestyle.

Self-confessed vehicle enthusiast Malcolm Holland has long had a passion for American cars and trucks, having owned them virtually all his adult life. The oldest, and perhaps most precious, is his 1941 Cadillac, affectionately named Pearl, bought ten years ago on eBay, sight unseen other than a few photos and a chat with the seller.

"A brave or mad move considering she was in San Rafael, just north of San Francisco, California," recalls Malcolm. "We did a fair bit more research about the vehicle type before bidding on her, but it was still a bit of a risk!"

Fitting into their lives perfectly, Malcolm and his wife Tracey enjoyed taking Pearl to vintage car shows and meeting with groups of friends at events who share their love for the 1940s and 50s.

Until recently, the couple had camped whilst away on such travels, but having hit their sixties, they found they required more comfort and convenience. And so, the idea of a caravan came to mind, but it would need to be compatible with their beloved Pearl.

"I initially thought of a teardrop caravan," says Malcolm. "But we wanted something that would allow us to be more self-contained and still towed by Pearl, which is why the Swift Basecamp appealed.

"To make it work, we had to make a towbar modified from a P38 Range Rover bar. I wanted a swan neck type, demountable so that when we were at car shows we could remove the bar and not disturb Pearl's sleek lines...or bang my shins while opening the boot!"

Further modifications included converting the electrics from the original 6v positive earth to 12v negative earth.



"The Basecamp provides all the basic comforts for off-grid events, which these events tend to be, so no hookup, but we have the shower and toilet facilities on board, so are nicely self-contained. Its simplicity suits well!"



You can request to join the group on Facebook at @swiftbasecampowners.

“We’ve taken Pearl and Bing to the Vintage Nostalgia Festival, WOMAD music festival, South Cerney Vintage Show and the Didmarton Bluegrass Festival”



“We rewired Pearl mainly because 6v cars can be tricky to start at times, and batteries are more expensive,” says Malcolm. “But it also meant we could have electric wipers, better headlights, and a modern sound system hooked up to an iPod so we can play all our favourite 1940s and 50s radio recordings whilst on the road.”

Since taking delivery of their Basecamp ‘Bing’ in September 2022, the caravan and classic car have formed a perfect pairing for Malcolm and Tracey to travel to events from their Wiltshire home.

“We’ve taken Pearl and Bing to the Vintage Nostalgia Festival, WOMAD music festival, South Cerney Vintage Show and the Didmarton Bluegrass Festival,” says Malcolm.

“The Basecamp provides all the basic comforts for off-grid events, which these events tend to be, so no hookup, but we have the shower and toilet facilities on board, so are nicely self-contained. Its simplicity suits us well!”

Equally embracing caravan life as they do all things 1940s, the couple are part of the Basecamp online community, including the dedicated Swift Basecamp Owners Facebook group and have attended the Basecamp Rally in the Forest of Dean.

“We’ve had a couple more weekends away to Caravan Club sites, with our longest run yet to Bamburgh in Northumberland for a week in autumn 2023. Though full disclosure, Bing was towed by our other vehicle, a 20-year-old Isuzu Rodeo pick-up for the latter trip. Even I’m not brave enough to make that journey with an 82-year-old car...yet!”

Community Basecamp

Own a Swift Basecamp? Then you could VIP your way into a thriving Facebook group where members share details of their BC adventures, top tips and fascinating stories, just like Malcolm’s!

The Swift Basecamp Owners group has been running for six years and now boasts 6,000+ members, with new people joining every week. This includes both existing and prospective BC owners from across the UK and around the world, with some as far-flung as New Zealand.

Compact and lighter in weight than traditional caravans, the Basecamp caravan provides the perfect crossover camping vehicle. Easy to tow by most family cars and simple to manoeuvre once on site, it’s a popular choice for those wanting a compact and comfortable space to rest and refuel whilst on their adventures.

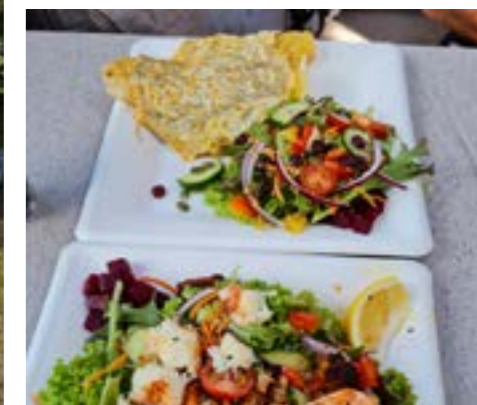
Creating a strong sense of community, the Facebook group provides space for owners and those looking to buy to ask specific BC questions and seek advice with ‘how to’ guides, helpful videos and campsite recommendations posted regularly.

Members also love to share photos and experiences of their travels along with details of dedicated BC events. This includes the annual Basecamp owners’ meet-up at the Forest of Dean, with the group renting out an entire field exclusively for its members and organising food, entertainment and activities across the weekend.



POSTCARDS FROM NEW ZEALAND

BOASTING BREATHTAKING COASTLINES, FASCINATING SITES OF HISTORIC INTEREST AND STUNNING NATIONAL PARKS, NEW ZEALAND IS A DREAM MOTORHOME HOLIDAY DESTINATION. WE HEAR FROM VERN WALKER WHAT HIS NATIVE SOUTH ISLAND HAS IN STORE FOR VISITORS, INCLUDING HIS MUST-STOP ALONG THE SCENIC OPEN ROAD.



My top advice to anyone planning a trip to New Zealand is always not to try and see everything in one go unless, of course, you have a significant amount of time to spare! Instead, plan either a North or South Island holiday and prioritise what interests you most. New Zealand may be a small country, but don't underestimate how much there is to see! As keen caravanners, my wife Julie and I know only too well how amazing the island is to explore out on the road, though, for overseas travellers, hiring a motorhome provides that same wonderful freedom to see our great country with less logistics involved. As a passionate South Islander, I'd naturally promote this area as a fantastic place to start your New Zealand adventures, thanks to our spectacular lakes, beaches and beautiful National Parks.

"Nelson boasts many beautiful golden sandy beaches and is the gateway to the popular Abel Tasman National Park."

We live in Nelson – known as the sunshine capital of New Zealand – which is at the top of the South Island. The beauty of our region extends to Blenheim – the country's wine capital – with numerous wineries leading into the Marlborough Sounds. Undoubtedly one of the most breathtaking places you'll see, this is a paradise of secluded bays made up of old river valleys brimming with blue Pacific Ocean waters.

Nelson boasts many beautiful golden sandy beaches and is the gateway to the popular Abel Tasman National Park. With excellent campgrounds at both Kaiteriteri and Marahau, the park can be entered on foot (for keen walkers!) or by boat cruise (a personal favourite!). This could all be seen en route to the Golden Bay, having diverted via Takaka Hill to see its mesmerising range of weathered marble formations.

Once you reach the coast, there's a great campground at Pohara from which you can explore a number of places. I'd certainly recommend a drive out to Farewell Spit at the very tip. A sanctuary of wildlife, it's home to 90 species of birds (and seal pups!) and is best experienced on an organised 4WD safari tour.

The West Coast is equally appealing and could be incorporated into the same motorhome holiday. The beauty of its beech forests, lakes, and unique landscapes typifies NZ's beauty.

I'd recommend heading to Karamea with a stop-off at Oparara Arches to admire its limestone arches, caves, rivers and rainforest, all within the Kahurangi National Park.

Karamea is popular with hikers and adventurers looking to experience New Zealand wilderness and explore the Heaphy Track. Known as one of NZ's nine great walks, some take on the entire 82-kilometre, multi-day trek whilst others enjoy short walks and mountain biking.

Next, I'd suggest travelling further down the coast to Punakaiki, stopping off at Denniston Plateau en route for an insight into the area's mining history. Punakaiki is another place of unique beauty, featuring a limestone landscape of pancake-shaped rock formations, blowholes and surge pools, with walking routes, vistas and kayaking to enjoy.

At the end of the day, a stay at the Punakaiki Beach Camp is a must. Sit on the sand and enjoy the sunset with a glass of wine, and, if you're lucky, you may even catch the mobile food cart offering delicious whitebait sandwiches!

This is just a taste of one small area of New Zealand. It really is a place that has so much to offer, and hiring a motorhome is undoubtedly an amazing way to experience even a tiny piece of it!

Just like the UK, driving in New Zealand will feel very familiar. New Zealanders drive on the left, along with the highway code and street signs being virtually identical to the ones you're used to back home.



Travel Notes

What to expect

Incredible nature and wildlife, spectacular coastline, and untamed wilderness.

What to see

The pure blue waters of Marlborough Sounds, the fascinating birds of Farewell Spit, the enchanting caves of Oparara Arches and the breathtaking vistas from Punakaiki's viewing platforms.

What to do

Winery visits, rainforest hikes, coastal drives, river kayaking and sunsets on the beach.

What to pack

Comfy walking shoes to explore the rugged landscape and National Parks and sandfly repellent to avoid being eaten alive on the coast!



GREAT CARAVAN MOTORHOME & HOLIDAY HOME SHOW 2024

Friday 6 – Sunday 8 September

Enjoy the Biggest Outdoor Caravan,
Motorhome and Holiday Home
show in the UK

- Meet the manufacturers
- Explore the latest models
- Accessory shopping
- Make a weekend of it and enjoy beautiful Harrogate
- Live music
- Family entertainment

Register your interest here to get discounted tickets

theharrogateshow.co.uk

A Retirement Dream Realised

AS SIMON AND RACHEL WRIGHT RECENTLY DISCOVERED, SWIFT GO'S 'TRY BEFORE YOU BUY' SCHEME CAN HELP MAKE INVESTING IN A MOTORHOME OR CAMPERVAN A SMOOTHER DECISION. HERE, WE CHAT TO THE COUPLE ABOUT THE JOURNEY TO THEIR SWIFT WAY OF LIFE, THE TRIPS THEY'VE BEEN ON SO FAR AND WHAT ADVENTURES LIE AHEAD.

Having previously enjoyed a motorhome holiday and recently retired from work, Simon Wright found himself increasingly drawn to the idea of owning a motorhome or campervan so he and his wife Rachel could get away more.

However, with a national increase in demand for new vehicles temporarily putting Simon's plans on hold, his local Swift dealer suggested Swift Go's 'Try Before You Buy' scheme. The simple offer invites those interested in buying a Swift vehicle to hire one for a holiday, and if they go on to make a purchase within the following six months, the cost of the hire will be deducted from the final purchase price*.

Not only is this an appealing option for those unsure of which Swift vehicle is most suited to their needs, but for Simon and Rachel, it allowed them to take their retirement idea for a test run while more new vehicles became available.

“Knowing we were pretty set on purchasing our own vehicle, the scheme seemed like a no-brainer,” recalls Simon. “So we planned a trip with friends to one of our favourite places – The Isle of Arran – for June 2023.”

Hiring a Select 122 for seven nights, Simon and Rachel headed North from their Darlington home to pick up the vehicle from the Livingston Swift Go branch.

“The process couldn't have been easier,” says Simon. “They were flexible on times to suit our journey and had everything ready for our arrival, so after a quick tour of the van, we were on the road.”

“It happened to be one of the hottest weeks of the year, but the flyscreens meant we could keep the windows open at night and were perfectly comfortable.”



As expected, the trip cemented the couple's dream for their own campervan, and they went on to take delivery of their Carrera 144 in October 2023. The model appealed to Simon and Rachel due to its four belted seats, which would allow them to carry passengers and fit within their six-metre maximum length requirement.

Having affectionately named the campervan “Vinny” – after Vincent van Gogh (of course!) – they wasted no time in hitting the road!

“Just after getting Vinny, we travelled to Dumfries and Galloway,” says Simon. “In contrast to our previous trip, it was minus seven degrees at night, but the night-time heat setting meant we remained toasty. We also went to Beale in Northumberland and stayed at The Barn, a lovely campsite with incredible vistas across towards Holy Island.”

“We got our little dog – Billy the Miniature Schnauzer – last year too, which changed how we holiday, and so we're spending more time in the UK for now, which we love. There are so many beautiful untouched places that we're excited to explore, and campervanning is suited to what we enjoy – the outdoors, walking with Billy, stunning views and a glass of wine or gin on an evening!”

And Vinny won't be staying put long with Simon and Rachel's 2024 itinerary, which already includes return trips to Dumfries, Galloway, and Arran, plus some island-hopping adventures.

“We're most looking forward to visiting the Isle of Gigha,” says Simon. “It's been described to us as ‘heaven on earth’.”

To find out more about a ‘Try Before You Buy’ Swift experience, visit www.swiftgo.co.uk. *T&Cs apply.

On The Road With Simon & Rachel

Favourite feature of Carrera 144?

The panoramic skylight window. Light floods in, and it gives such a sense of space.

Best thing about campervan holidays?

Stopping to take in incredible views with a cuppa in hand.

Dream campervan destination?

A month's trip to our place in Spain with Billy and some scheduled winery stops along the way!

What's playing while you travel?

One of our playlists via Apple Carplay, which includes the likes of Jack Savoretti, Gary Barlow and Coldplay.

And your must-pack item?

A corkscrew!

*T&Cs apply see <https://swiftgo.co.uk/why-swift-go/try-before-you-buy/> for full details

Ten Years of Swifting SMART

AS A RECOGNISED TRAILBLAZER IN THE LEISURE VEHICLE INDUSTRY, WE CONSISTENTLY RAISE THE BAR WITH OUR UNWAVERING COMMITMENT TO RESEARCH AND INNOVATION. THIS SEASON, WE'RE THRILLED TO COMMEMORATE A SIGNIFICANT MILESTONE IN THIS FIELD – A DECADE OF SMART CONSTRUCTION.





What is Smart Construction?

SMART is an ingenious blend of materials and construction techniques that guarantee enhanced structural integrity, improved insulation and all-important weather resistance – ensuring your investment will stand the tests of touring and help retain your caravan or coachbuilt motorhome's residual value.

PURe Polyurethane framework: The strong timberless body frame uses 'PURe', a tough, hard polyurethane-based product that's totally impervious to water to guarantee longevity.

Polystyrene core: Cut to precision using innovative water jet technology, the lightweight polystyrene core ensures Grade 3 thermal properties for year-round adventures.

GRP: With consistent inner and outer skin thickness, Swift's balanced GRP panels allow for expansion and contraction in different climatic conditions. Plus, jointless sealing, impact resistance, and scratch-proof properties maintain enduring aesthetics.

Floor: Woven heavy-duty GRP is applied to the floor underside, insulated with 35mm Ravatherm, while the inner layer is made from 9mm marine grade

The Art of SMART Construction

Roof: The outer layer of the hail-resistant roof is fully bonded with woven white GRP and built with increased strength to allow for any additional features, such as satellite dishes.

What does SMART stand for?



STRONG

The strong timberless body frame uses 'PURe', a tough, hard polyurethane-based product that is totally impervious to water and has been proven through use.



RESILIENT

Our self-manufactured Glass Reinforced Plastic (GRP) outer and inner skins are more impact-resistant than aluminium and can be easily repaired, ensuring the long-lasting good looks of our vehicles.



MODERN

SMART uses modern materials produced using cutting-edge technology and has been developed to ensure the exterior profiles maintain the contemporary desirable looks our caravans and coachbuilt motorhomes are renowned for.



TESTED

Extensive safety and durability testing – including cold chamber exposure down to minus 15°C and below – puts prototypes through conditions most products will never have to experience in a lifetime.



AERODYNAMIC

We continue to lead the way in aerodynamics using Computational Fluid Dynamics to help shape the bodyshell for better fuel consumption and safer towing.



Introducing the NEW award-winning Swift Challenger Exclusive

Only available at selected dealerships, Challenger Exclusive is an enhanced version of Challenger SE. Additional premium features make this range extra special including, striking grey GRP side walls, onboard Wi-Fi and the Swift Command control panel with built-in Command Tracker.*

With nine 2-6 berth layouts to choose from, including the spacious 8ft-wide Grande range, there's a model tailored to every taste.

Find out more at swiftgroup.co.uk

*Subscription required for Command Tracker



Your Home Anywhere

MANUFACTURED IN BRITAIN



SWIFT